

Business Radio '07

Ofcom Spectrum Management System Workshop

Nigel Gunn – Ofcom
Mostafa Relmy - Ofcom

22nd November 2007

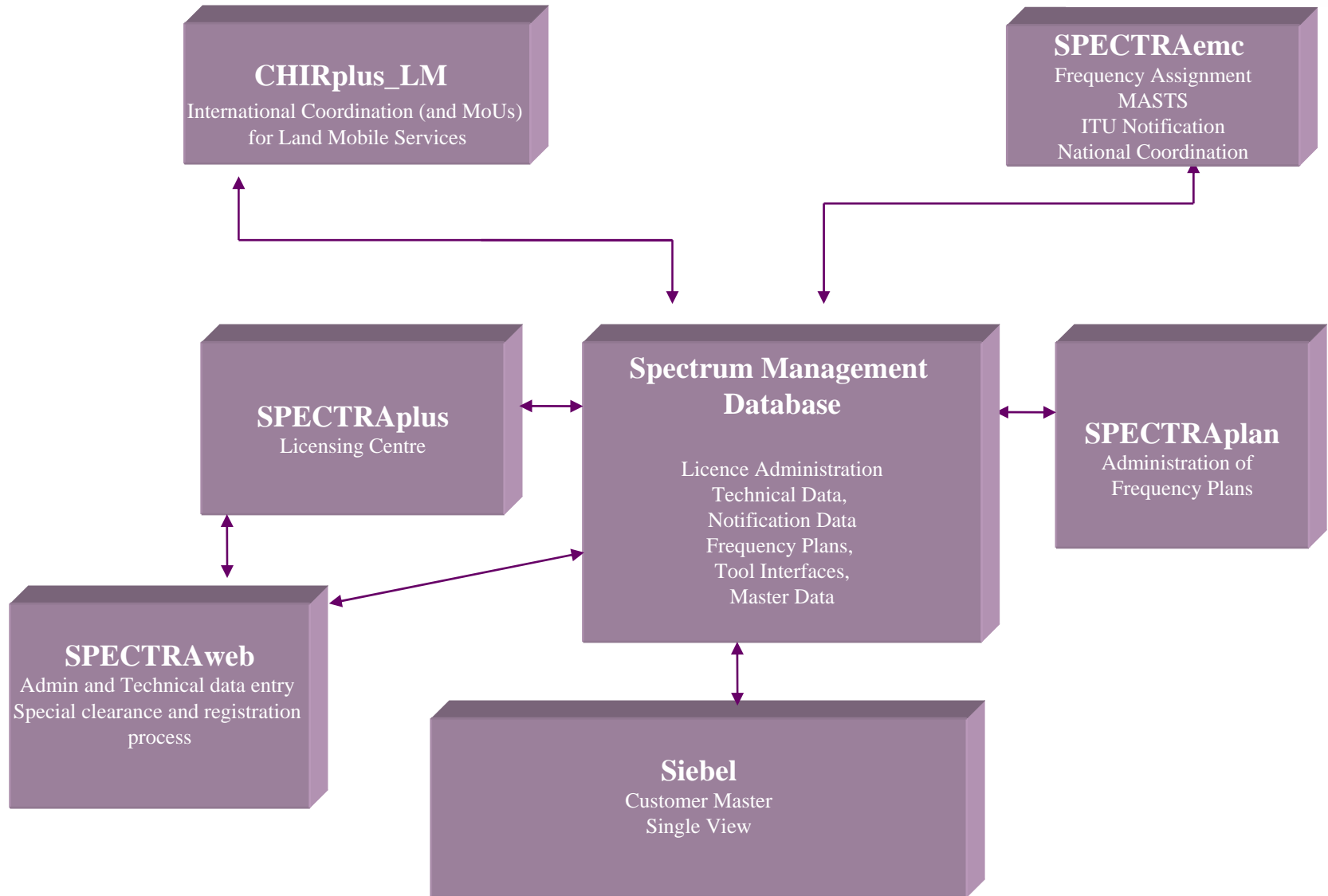
Structure

- Part 1 – Overview of Spectrum Management System
 - Architecture
 - Licensing Process
- Part 2 – Spectrum Management System Demo
 - Scenarios
 - Light Licence
 - Technically Assigned
 - MASTS Scenarios
 - Assignment Process (SpectraEMC)
 - International Co-ordination (MoUs – Chirplus_LM)
 - Area Defined
 - Frequency allocation and Channel Plans (SpectraPlan)
- Part 3 – WT Act Register and EFIS

Please Note!

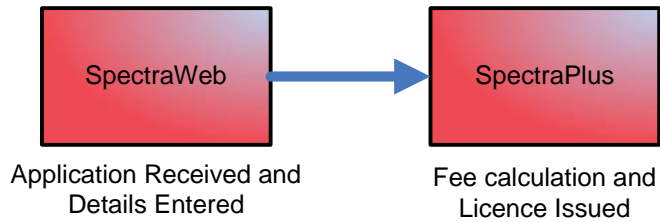
- *The software being demonstrated today is at the “work in development” stage and the results shown may or may not be 100% correct as compared to the system that Ofcom will go-live with.*
- Areas under testing currently:
 - Propagation Model (ITU-R P.1546-3)
 - MASTS
 - MoUs/International Co-ordination
- Under Development:
 - New Application forms (updated technical and administrative data)
 - Multiple Base Stations
 - Post Issue Support
 - Variation
 - Termination (Surrender/Revocation)
 - Other MoUs
 - New consolidated assignment process

High-Level Overview of SMS Software Applications

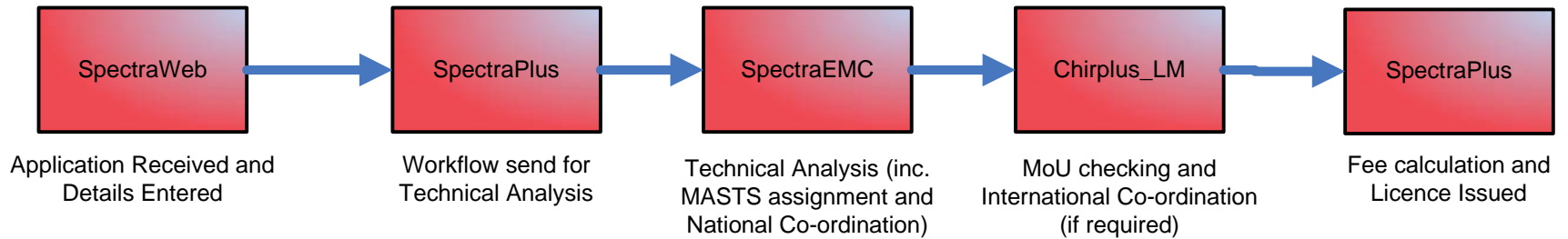


Licensing Process

LIGHT LICENCE

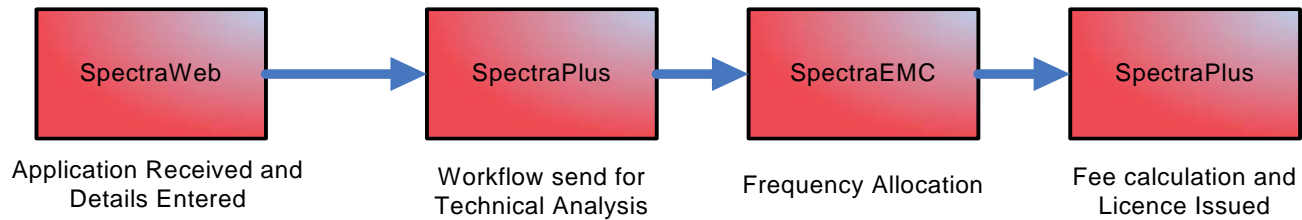


TECHNICALLY ASSIGNED LICENCE

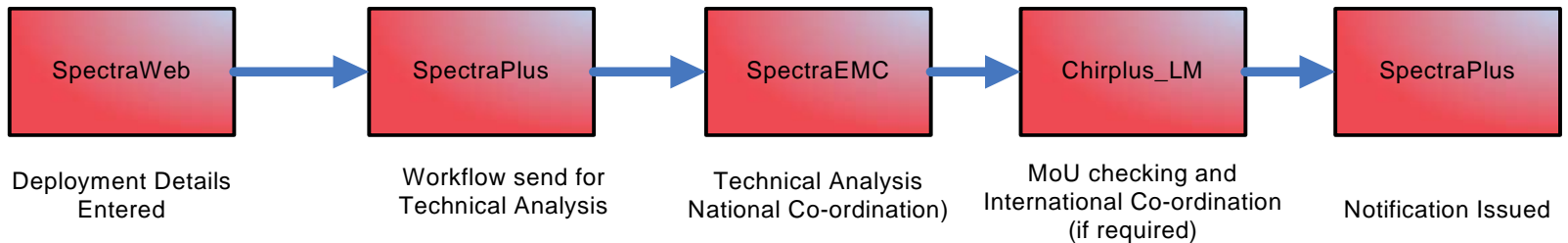


Licensing Process

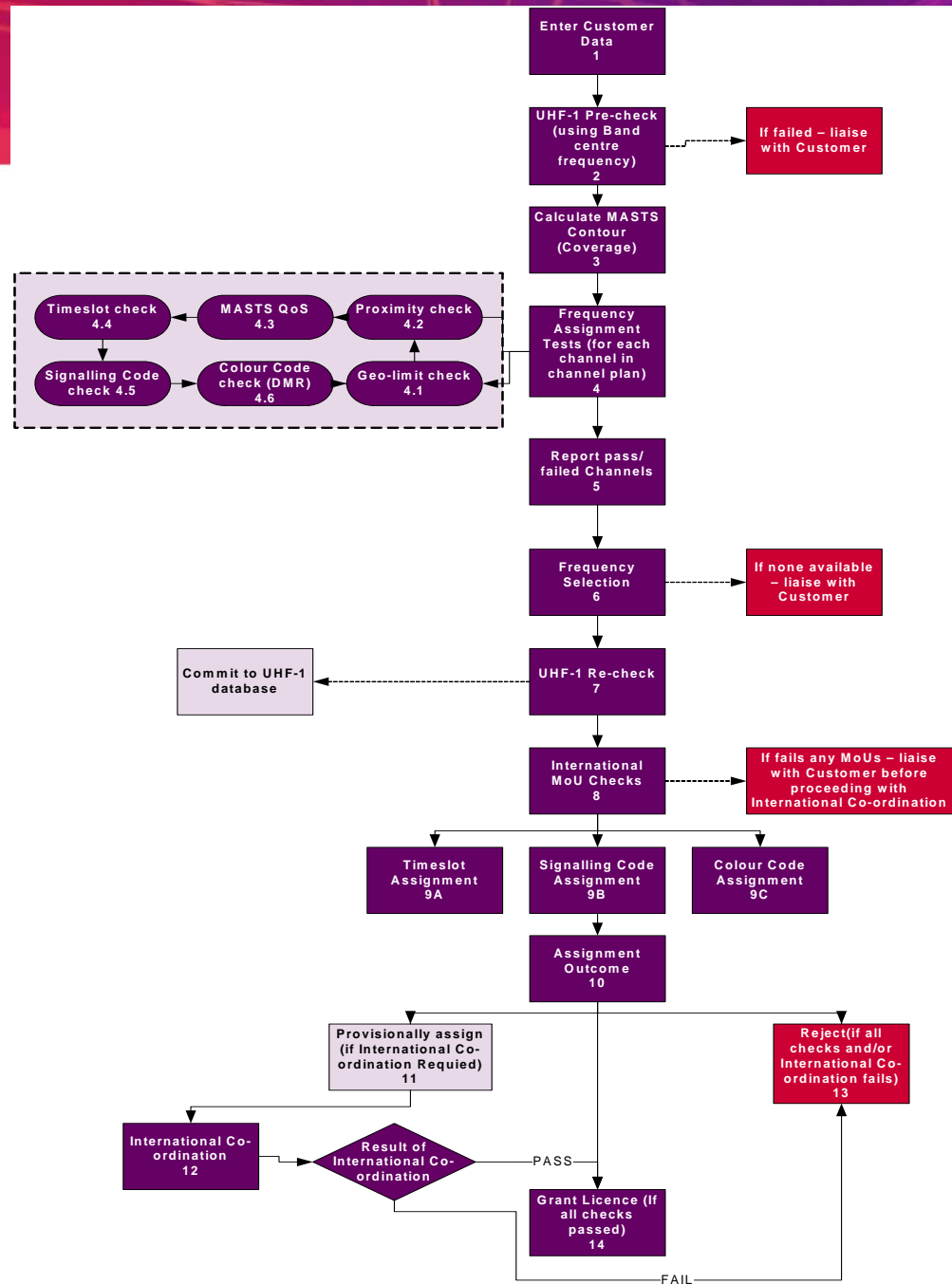
AREA DEFINED LICENCE



AREA DEFINED – POST ISSUE SUPPORT



Further Information New BR Assignment Process (for Technically Assigned)



Structure

- Part 1 – Overview of Spectrum Management System
 - Architecture
 - Assignment Process
- Part 2 – Spectrum Management System Demo
 - Application Form (SpectraWeb)
 - Light Licence, Technically Assigned (MASTS), Area-Defined Scenarios
 - Assignment Process (SpectraEMC)
 - International Co-ordination (MoUs – Chirplus_LM)
 - Frequency allocation and Channel Plans (SpectraPlan)
- Part 3 – WT Act Register and EFIS

Light Licence Scenario

- Simple Site UK
 - The only light licence product requiring any technical details
- Enter Site Location
- Commit to SpectraPlus
- Check data has been populated

Technically Assigned Licence Scenario

- Enter Technical Details in SpectraWeb
- Commit to SpectraPlus and check data has been populated
- Send to SpectraEMC for technical analysis, assignment and national co-ordination
- Geolimit / MoU checks
- MASTS Coverage calculation
- Frequency Scan (bring back all assignments within 120km)
- MASTS QoS calculations
- Confirm/Reject Assignment

Area Defined Licence Scenario

- Enter Technical Details in SpectraWeb
- Commit to SpectraPlus and check data has been populated
- Send to SpectraEMC for frequency allocation
- Frequency Scan
- Confirm/Reject Application
- Post Issue Support – not implemented yet

Frequency Allocation and Channel Plans

- Overview of Frequency plans available for Business Radio and compare with the ITU allocations
- The channel plan data is maintained in SpectraPlan and is used by the other applications
- Can query any frequency range to identify the allocation and use
- To follow – demonstration of the WT Act Register and EFIS (European Frequency Information System)