

Local DAB build-out scenario – Birmingham multiplex (11C)

Population and road coverage tables

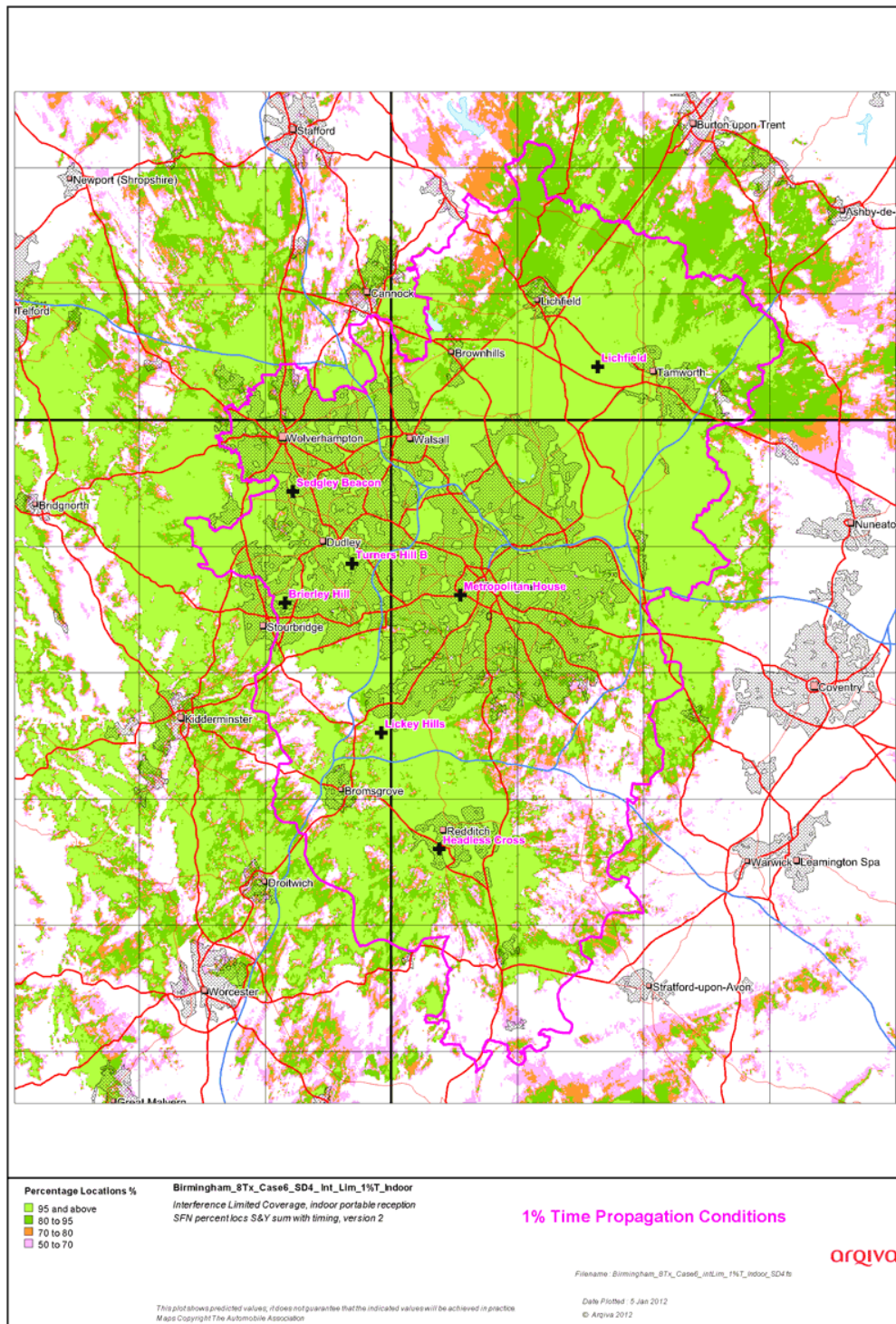
Indoor		
	99%T	Normal propagation
95%L	1,073,257 89.57%	1,129,034 94.23%
80%L	1,145,447 95.59%	1,170,290 97.67%
70%L	1,160,245 96.83%	1,179,040 98.40%
50%L	1,177,887 98.30%	1,188,261 99.17%
<i>Proportional</i> 80% / 95%	1,137,883 94.96%	1,165,990 97.31%

Total Households within DLA 1,198,231 Households

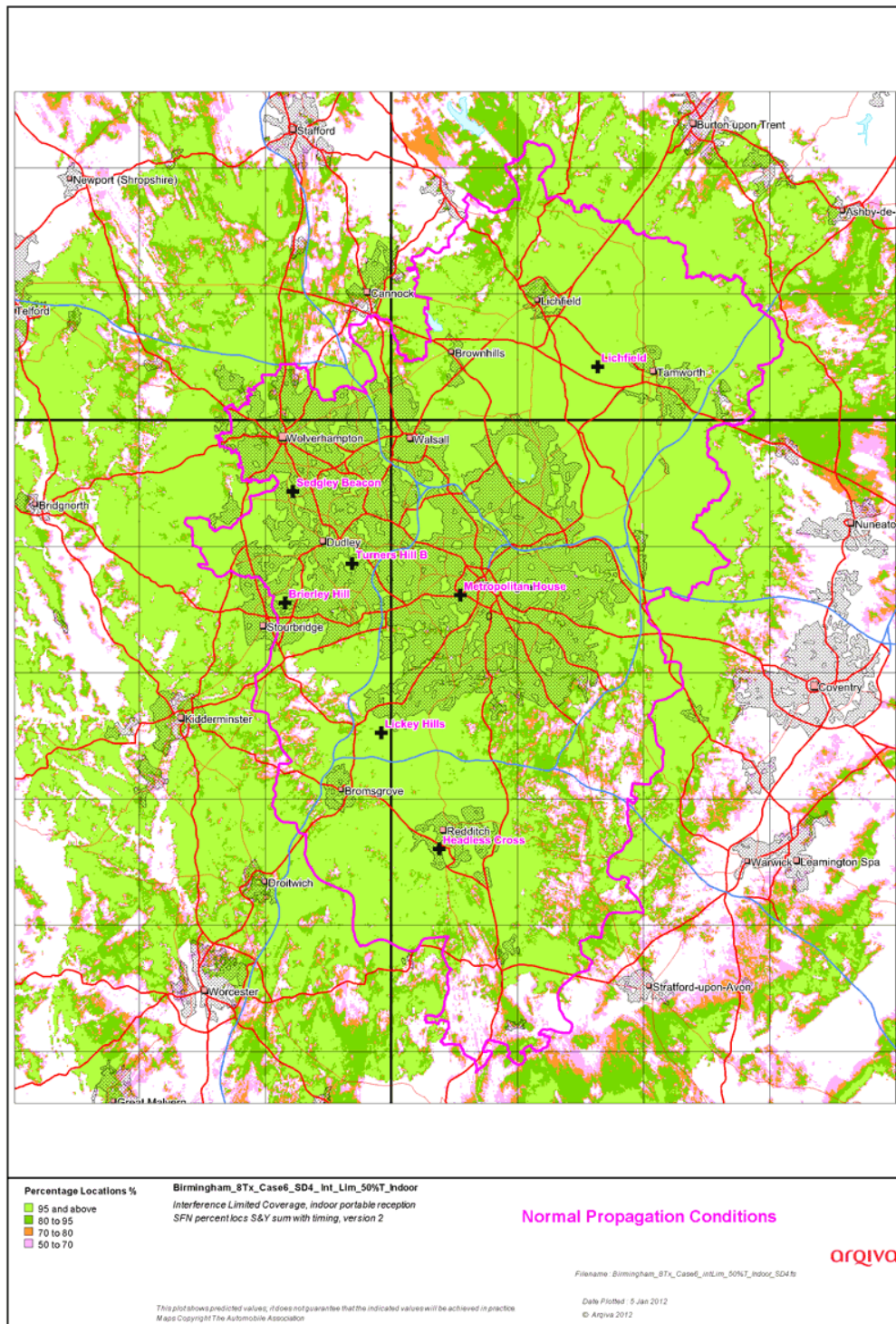
Outdoor Mobile		
	99%T	Normal propagation
99%L	958.1 km 87.68%	1,048.5 km 95.94%
95%L	995.2 km 91.07%	1,068.5 km 97.77%
90%L	1,011.4 km 92.55%	1,074.3 km 98.31%
70%L	1,045.1 km 95.64%	1,086.5 km 99.42%
50%L	1,062.5 km 97.22%	1,090.0 km 99.74%

Total Roads within DLA 1,092.8 km

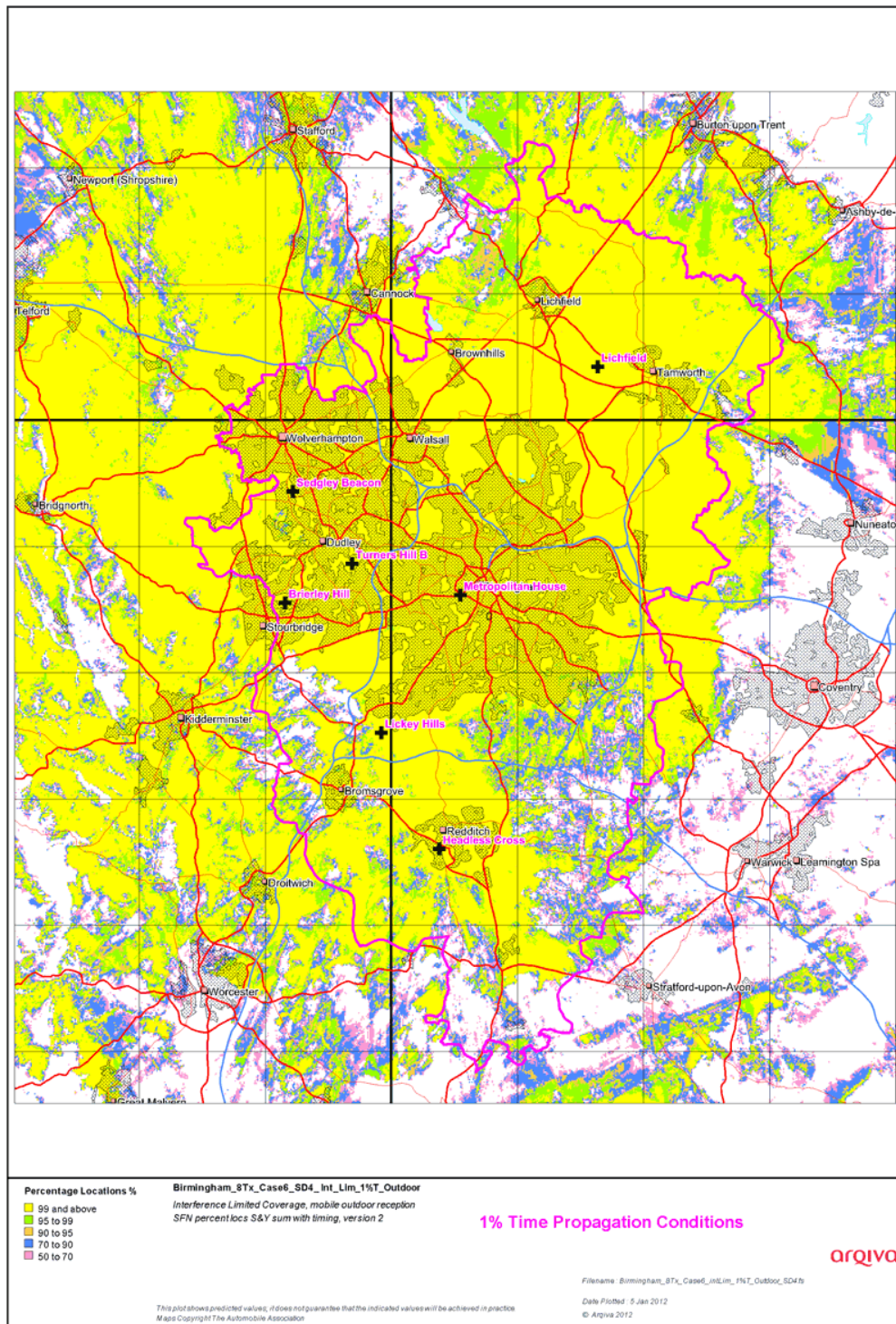
Indoor coverage, 99% time availability



Indoor coverage, normal propagation conditions



Outdoor coverage, 99% time availability



Outdoor coverage, normal propagation conditions

