

Local DAB build-out scenario – Exeter and Torbay multiplex (11C)

Population and road coverage tables

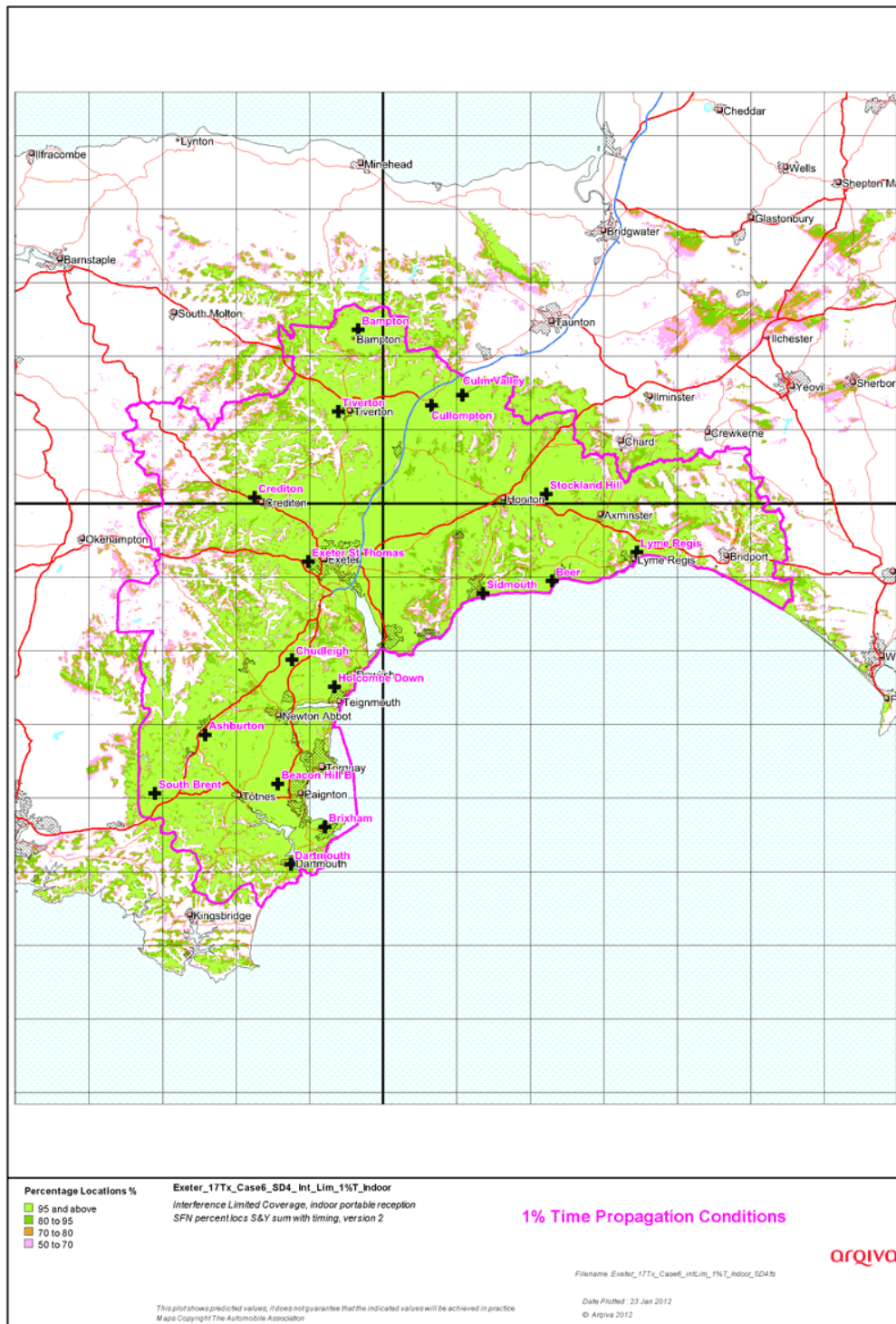
Indoor		
	99%T	Normal propagation
95%L	267,586 84.89%	276,303 87.65%
80%L	283,287 89.87%	288,717 91.60%
70%L	288,349 91.48%	292,647 92.84%
50%L	294,588 93.46%	297,294 94.32%
<i>Proportional 80% / 95%</i>	281,509 89.31%	287,325 91.16%

Total Households within DLA 315,203 Households

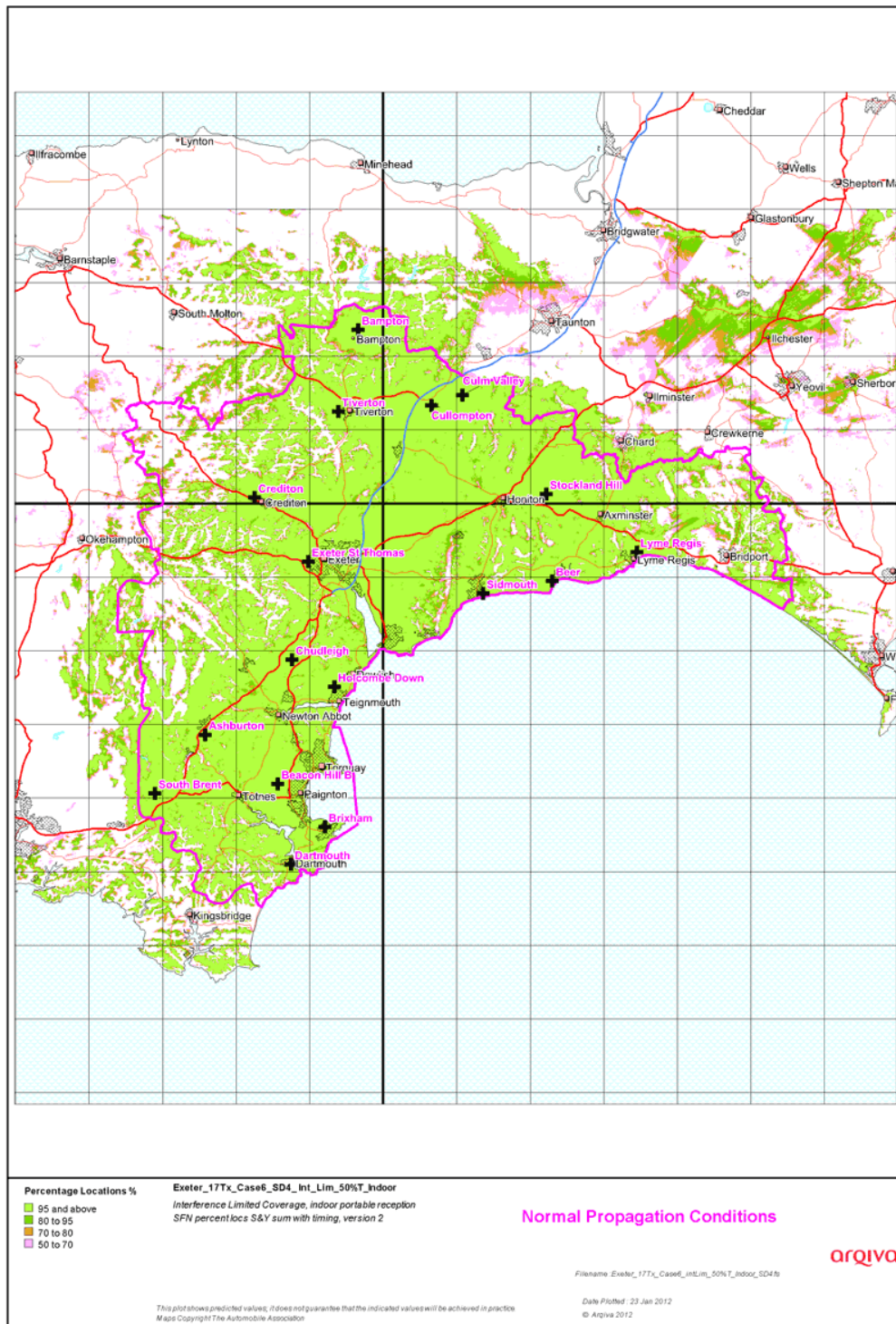
Outdoor Mobile		
	99%T	Normal propagation
99%L	565.1 km 81.85%	625.7 km 90.62%
95%L	601.1 km 87.06%	640.7 km 92.80%
90%L	614.9 km 89.07%	645.2 km 93.45%
70%L	633.1 km 91.69%	653.7 km 94.67%
50%L	643.2 km 93.16%	659.2 km 95.47%

Total Roads within DLA 690.4 km

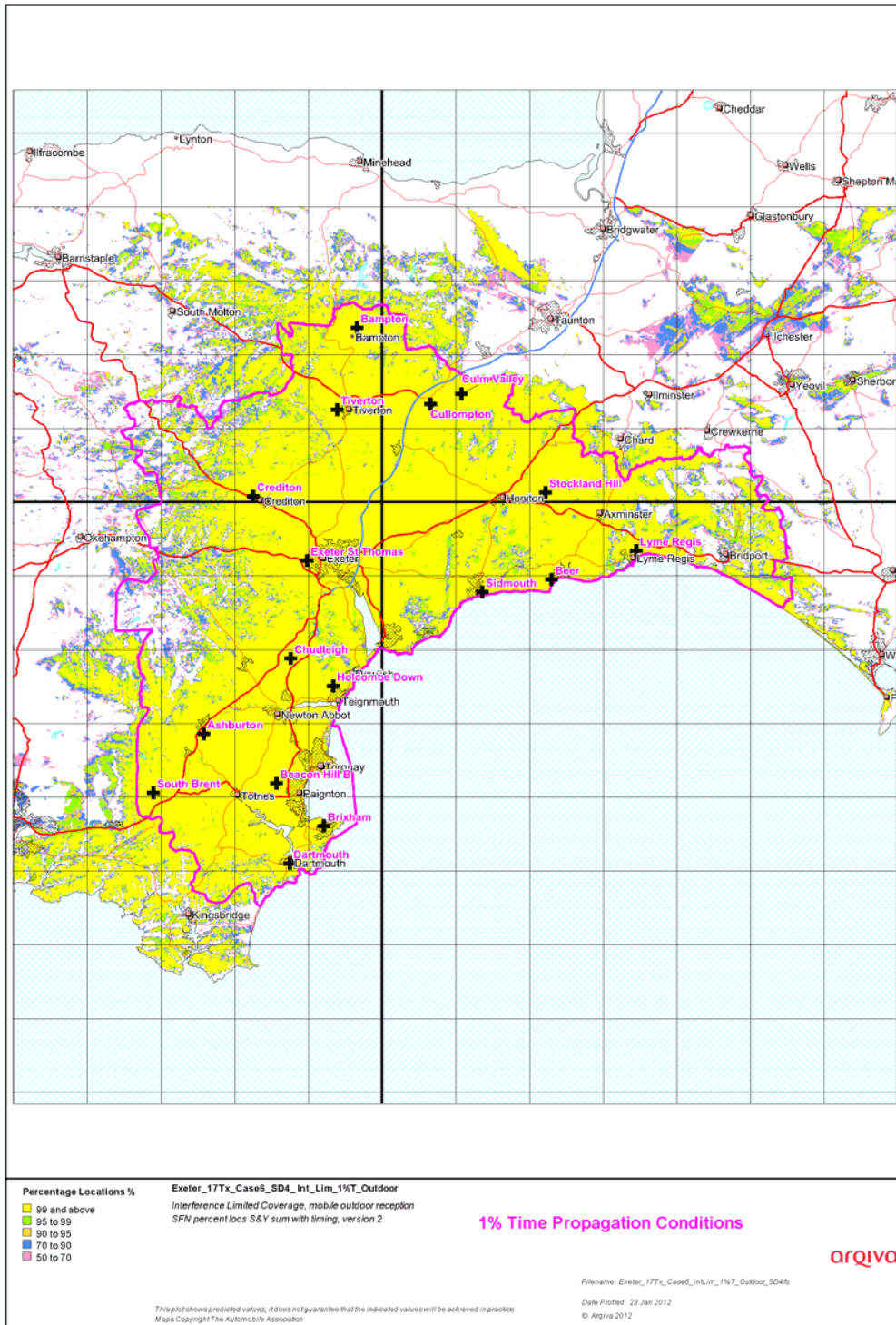
Indoor coverage, 99% time availability



Indoor coverage, normal propagation conditions



Outdoor coverage, 99% time availability



Outdoor coverage, normal propagation conditions

