

# Local DAB build-out scenario – Gloucestershire multiplex (10C)

## Population and road coverage tables

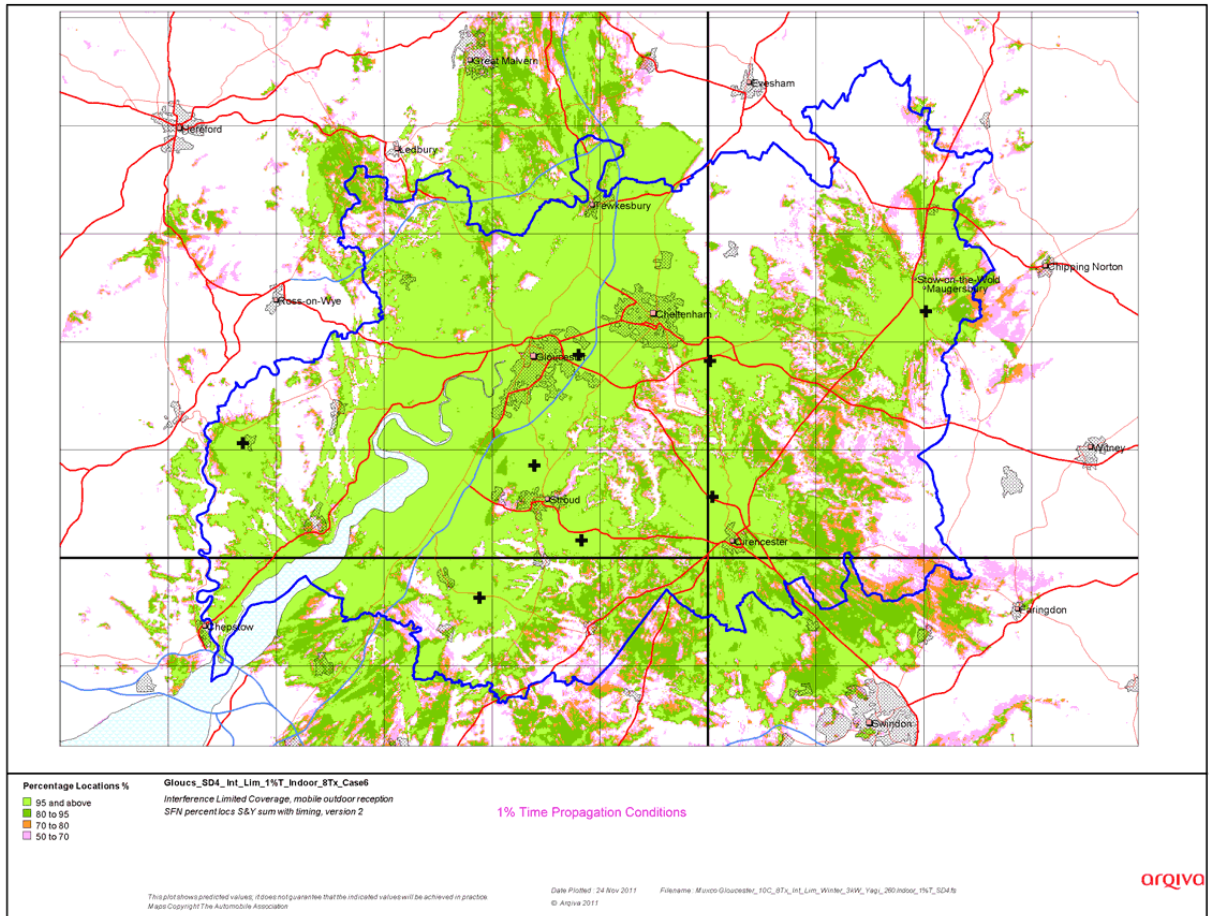
Indoor		
	99%T	Normal propagation
95%L	210,529 76.62%	220,721 80.33%
80%L	229,788 83.63%	239,803 87.28%
70%L	237,186 86.32%	245,428 89.32%
50%L	247,684 90.14%	252,326 91.83%
<i>Proportional 80% / 95%</i>	227,627 82.85%	237,684 86.51%

*Total Households within DLA*          274,476 Households

Outdoor Mobile		
	99%T	Normal propagation
99%L	524.8 km 79.15%	625.1 km 94.29%
95%L	568.2 km 85.70%	637.1 km 96.09%
90%L	589.7 km 88.94%	642.0 km 96.83%
70%L	621.9 km 93.80%	653.4 km 98.55%
50%L	635.2 km 95.80%	656.5 km 99.02%

*Total Roads within DLA*          663.0 km

# Indoor coverage, 99% time availability





# Outdoor coverage, 99% time availability

