



# DAB Coverage Plan: Mid and West Wales Local Multiplex

**Publication date: September 2020**

## Mid and West Wales local DAB multiplex (Block 12D) predicted final coverage

Indoor Coverage	1% Time Propagation (HH)	Normal Propagation (HH)	Map Colour
<b>Proportional count: 80% to 95% Locations</b>	<b>143,413 (66.75%)</b>	148,562 (69.15%)	Not Applicable
<b>95% Locations</b>	128,021 (59.59%)	128,021 (59.59%)	
<b>80% Locations</b>	145,322 (67.64%)	135,816 (63.22%)	
<b>70% Locations</b>	150,566 (70.08%)	154,102 (71.73%)	

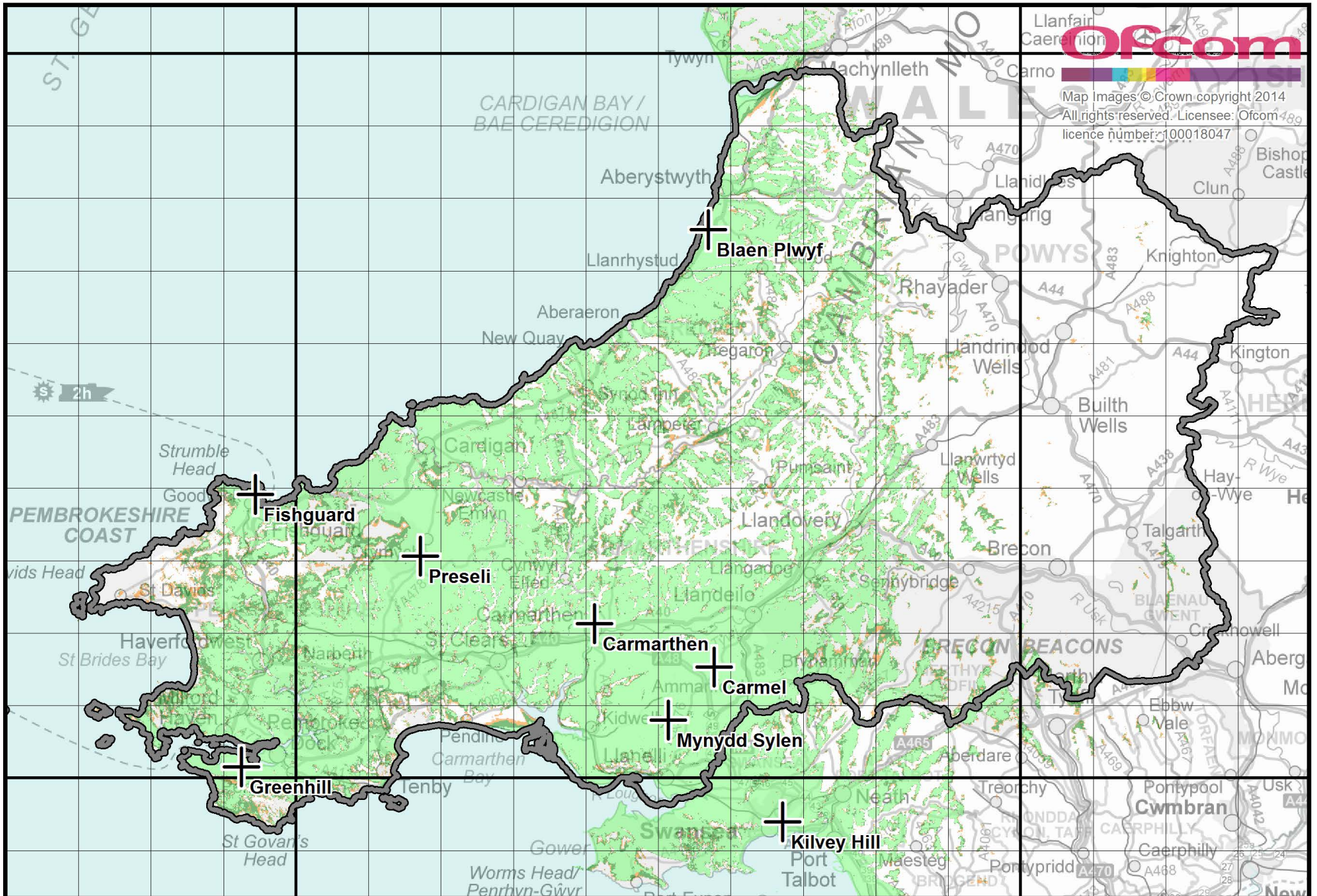
Table one, total Households within the Digital Licence Area: 214,845 Households

Outdoor Mobile Coverage	1% Time Propagation (km)	Normal Propagation (km)	Map Colour
<b>99% Locations</b>	<b>714.9 (54.09%)</b>	798.6 (60.42%)	
<b>95% Locations</b>	776.1 (58.72%)	842.6 (63.74%)	
<b>90% Locations</b>	803.2 (60.76%)	865.1 (65.45%)	
<b>70% Locations</b>	867.9 (65.66%)	905.1 (68.47%)	

Table two, total Motorway and 'A' road length within the Digital Licence Area: 1,321.9 kilometres

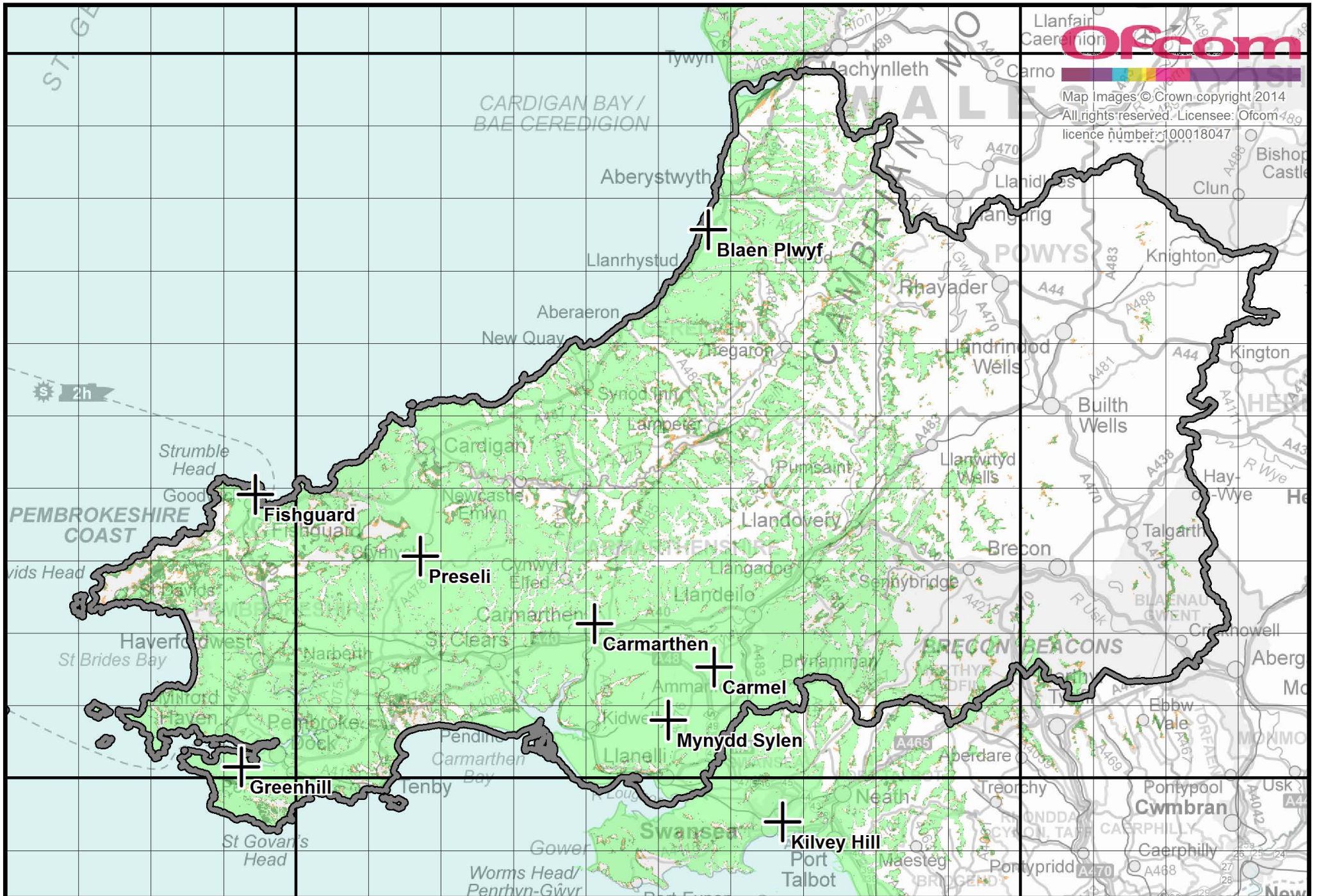
Site Name	NGR	Site height (m)	Aerial Height (m)	Power (kW)
Blaen Plwyf	SN 569 757	177	125	5.0
Carmarthen	SN 412 213	137	31	0.6
Carmel	SN 576 153	259	118	5.0
Fishguard	SM 944 391	122	26	1.0
Greenhill	SM 924 015	72	52	1.0
Kilvey Hill	SS 671 940	193	46	1.26
Mynydd Sylen	SN 514 080	279	45	1.2
Preseli	SN 172 306	324	207	5.0

Table three, transmitters in use or proposed for the Mid and West Wales local multiplex. In the above table future sites are highlighted in **BLUE**.



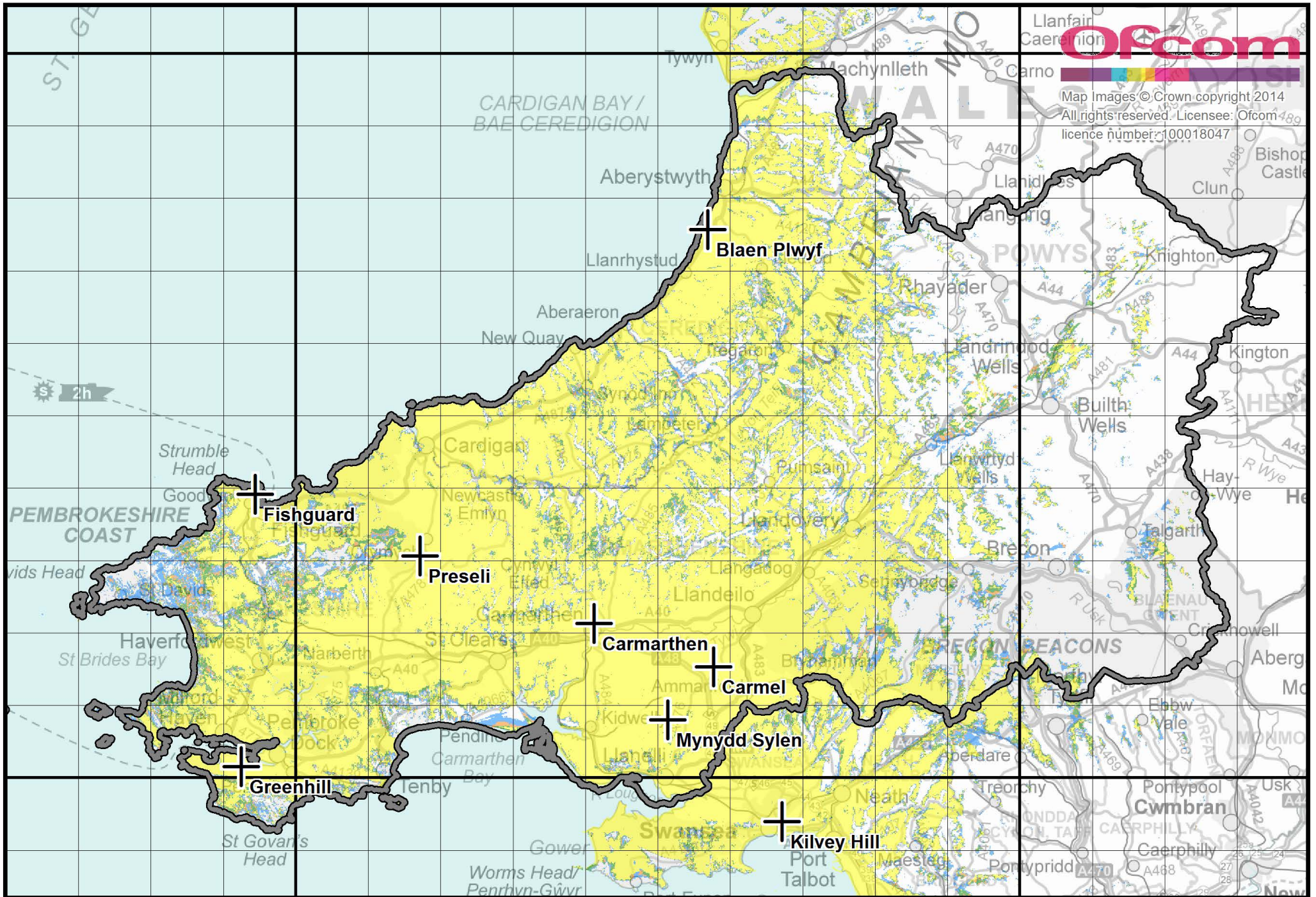
Mid and West Wales Local DAB Multiplex Service

Predicted indoor coverage enhanced propagation conditions, Final



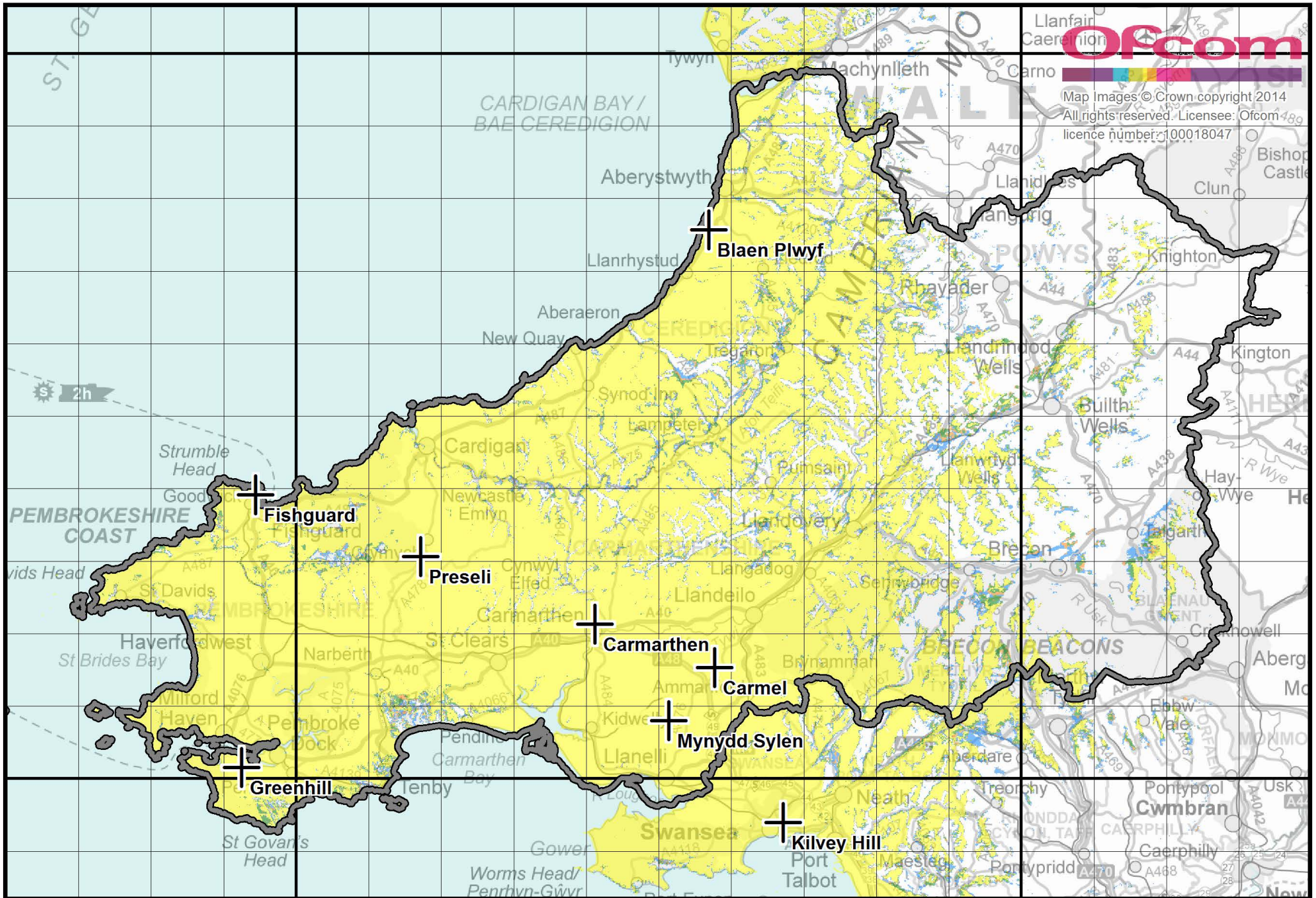
Mid and West Wales Local DAB Multiplex Service

Predicted indoor coverage normal propagation conditions, Final



Mid and West Wales Local DAB Multiplex Service

Predicted mobile coverage enhanced propagation conditions, Final



Mid and West Wales Local DAB Multiplex Service

Predicted mobile coverage normal propagation conditions, Final