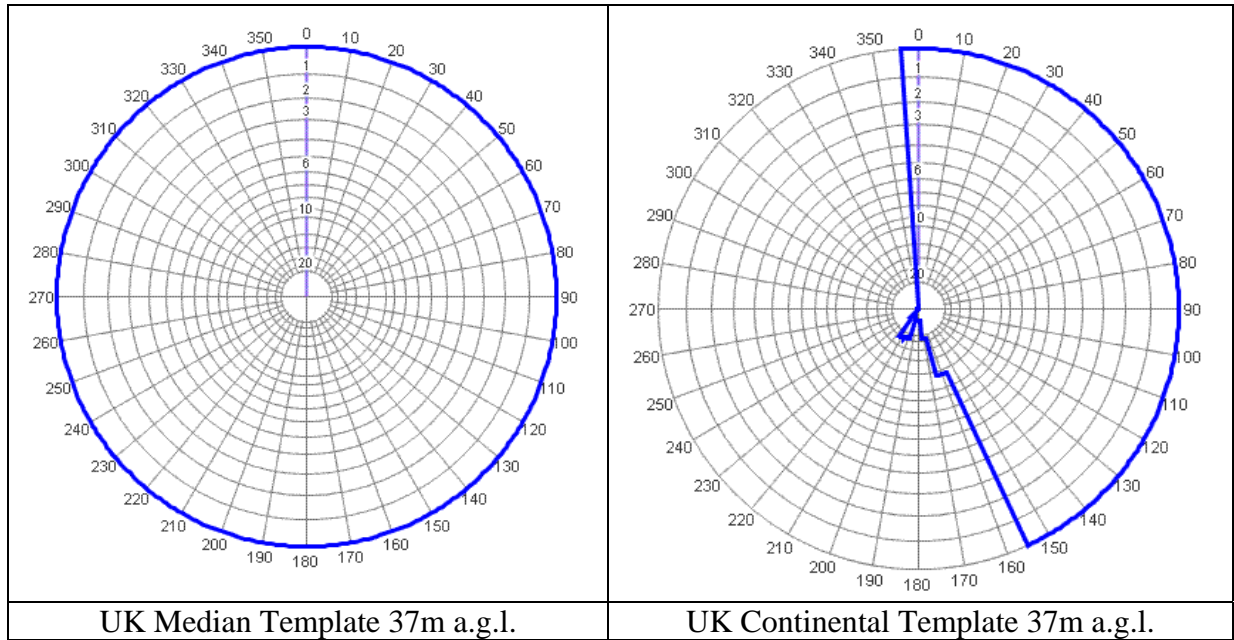
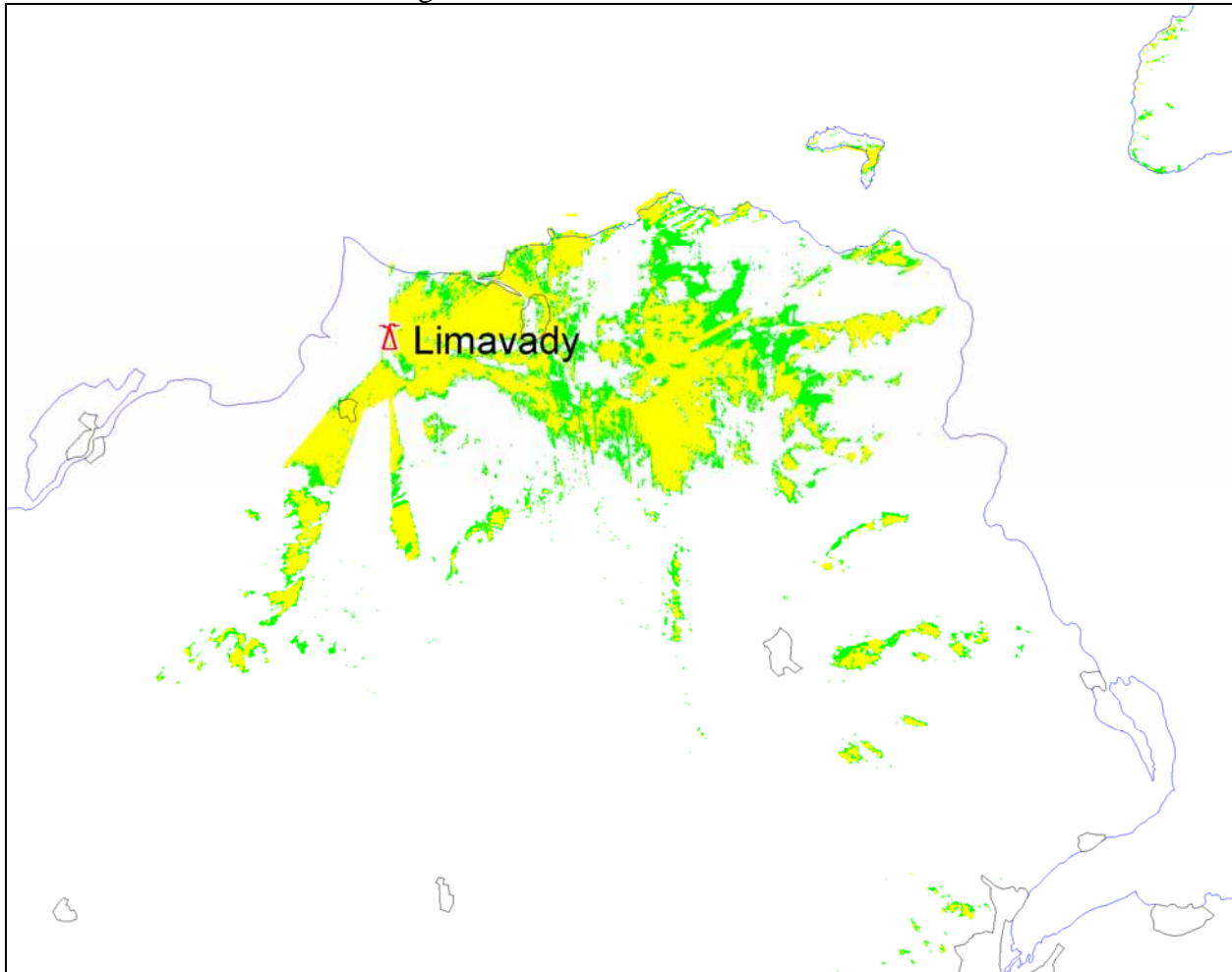


**Station:** LIMAVADY  
**Location:** NV 8852 9031  
**Site Height** 342 m a.m.s.l.  
**Channel** 56  
**Max ERP:** 40 dBW  
**Polarisation:** Horizontal



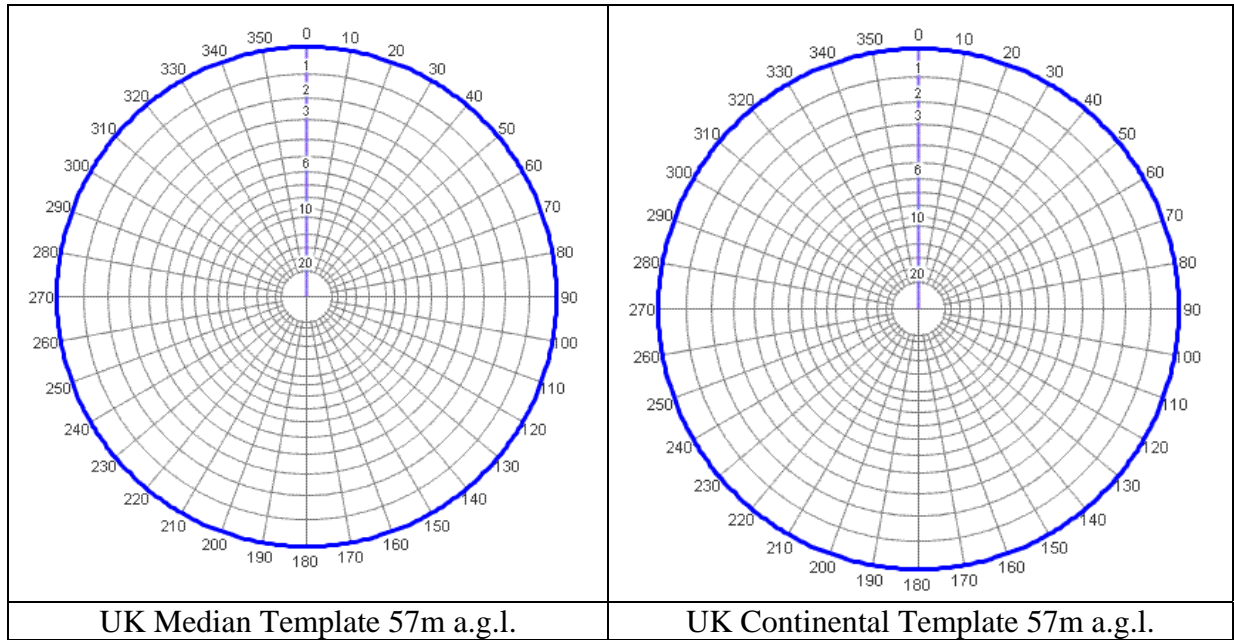
# LIMAVADY DTT Gross coverage



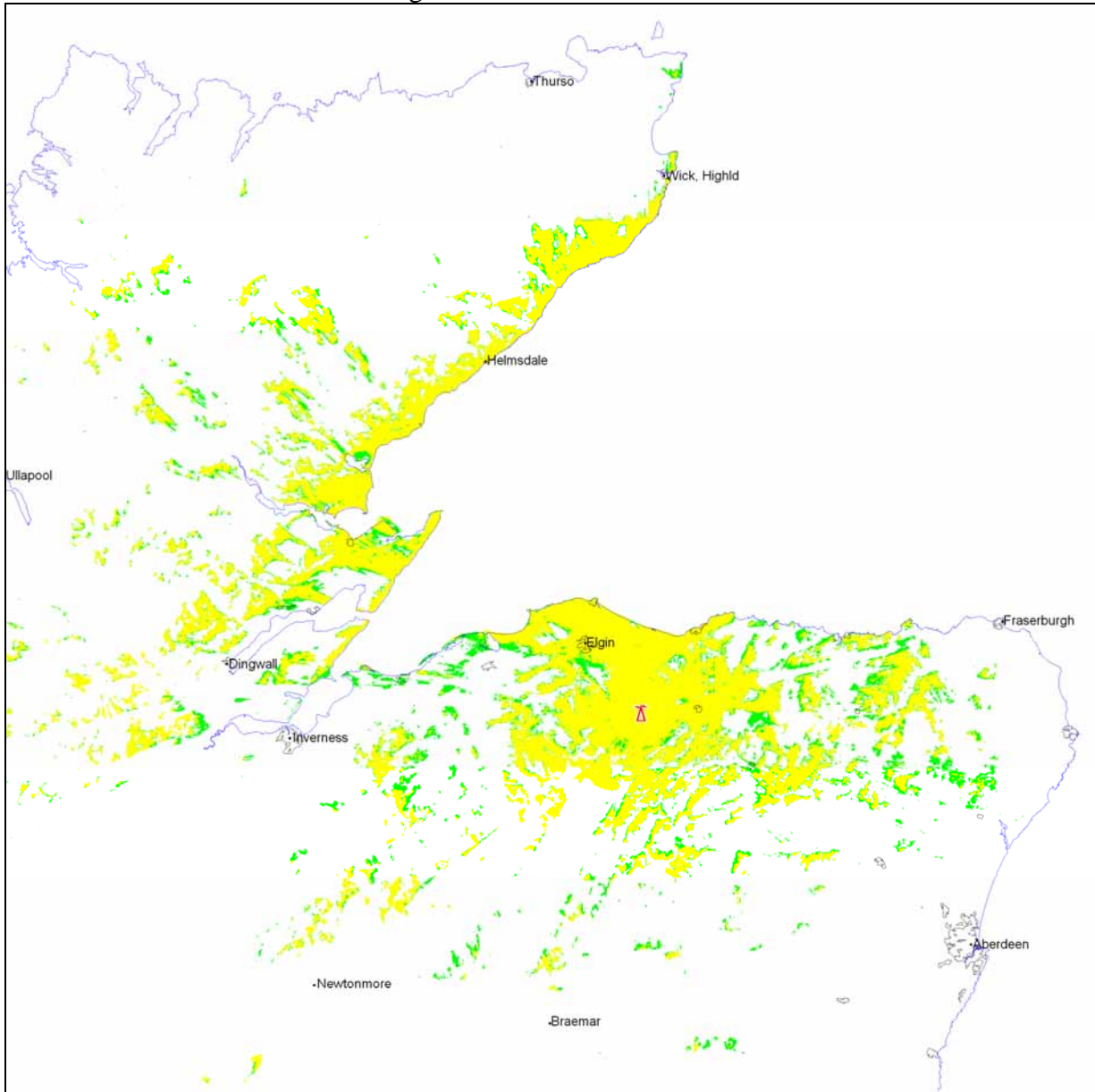
90% Locations and above  70% to 90% Locations

Gross coverage	29577 households
Analogue PSA Coverage	29015 households
Digital PSA Coverage	29322 households

**Station:** KNOCKMORE  
**Location:** NJ 3213 4970  
**Site Height** 353 m a.m.s.l.  
**Channel** 56  
**Max ERP:** 40 dBW  
**Polarisation:** Horizontal



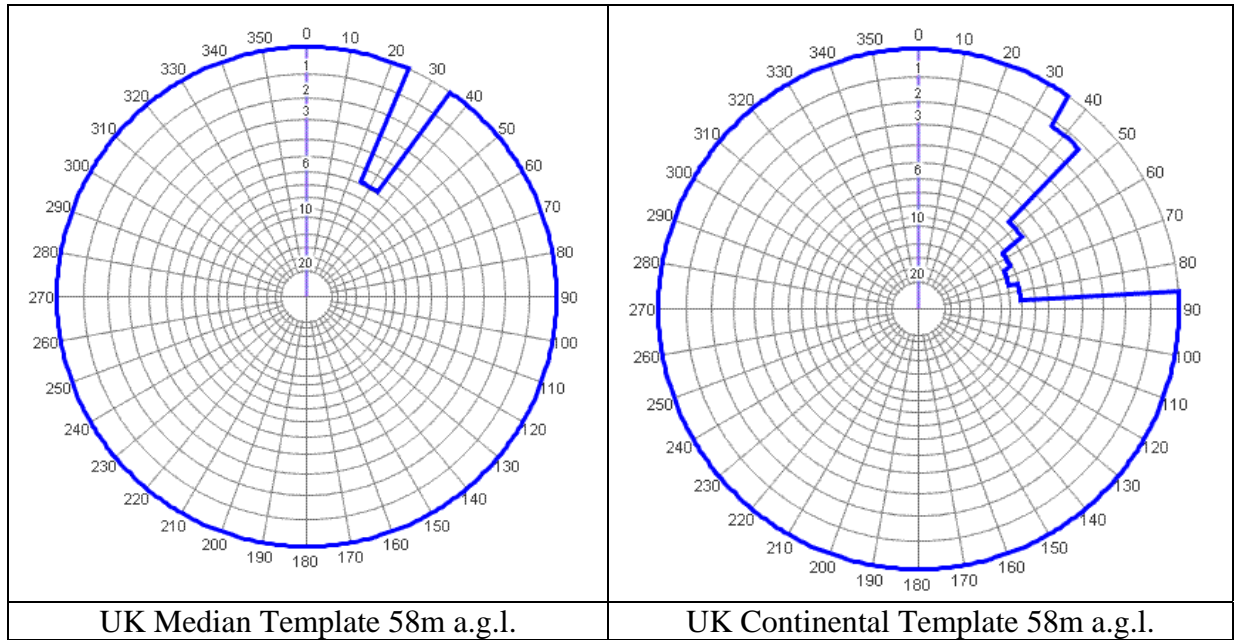
# KNOCKMORE DTT Gross coverage



90% Locations and above    70% to 90% Locations

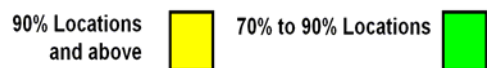
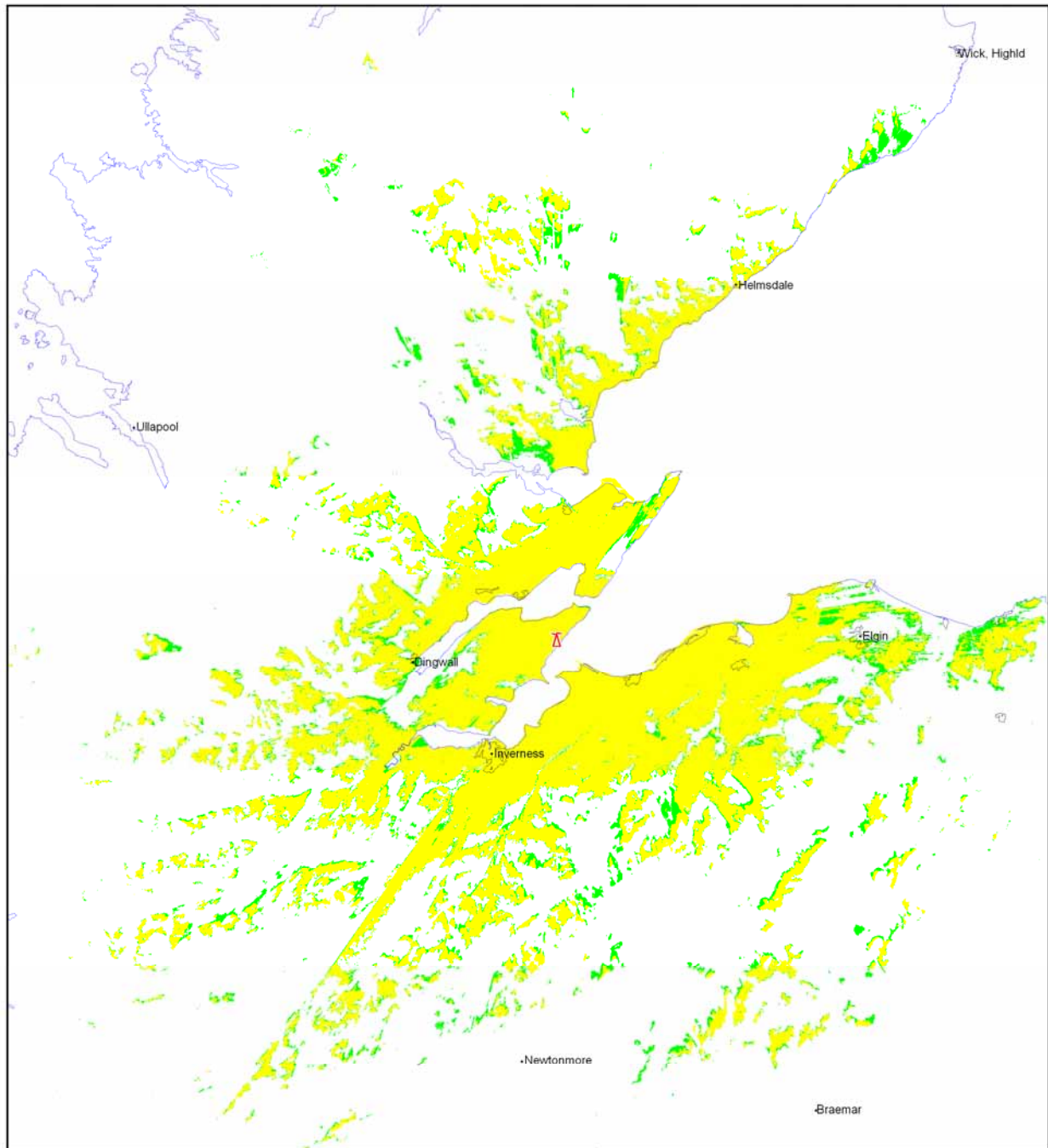
Gross coverage	50524 households
Analogue PSA Coverage	29460 households
Digital PSA Coverage	30131 households

**Station:** ROSEMARKIE  
**Location:** NH 7619 6226  
**Site Height** 206 m a.m.s.l.  
**Channel** 52  
**Max ERP:** 40 dBW  
**Polarisation:** Horizontal



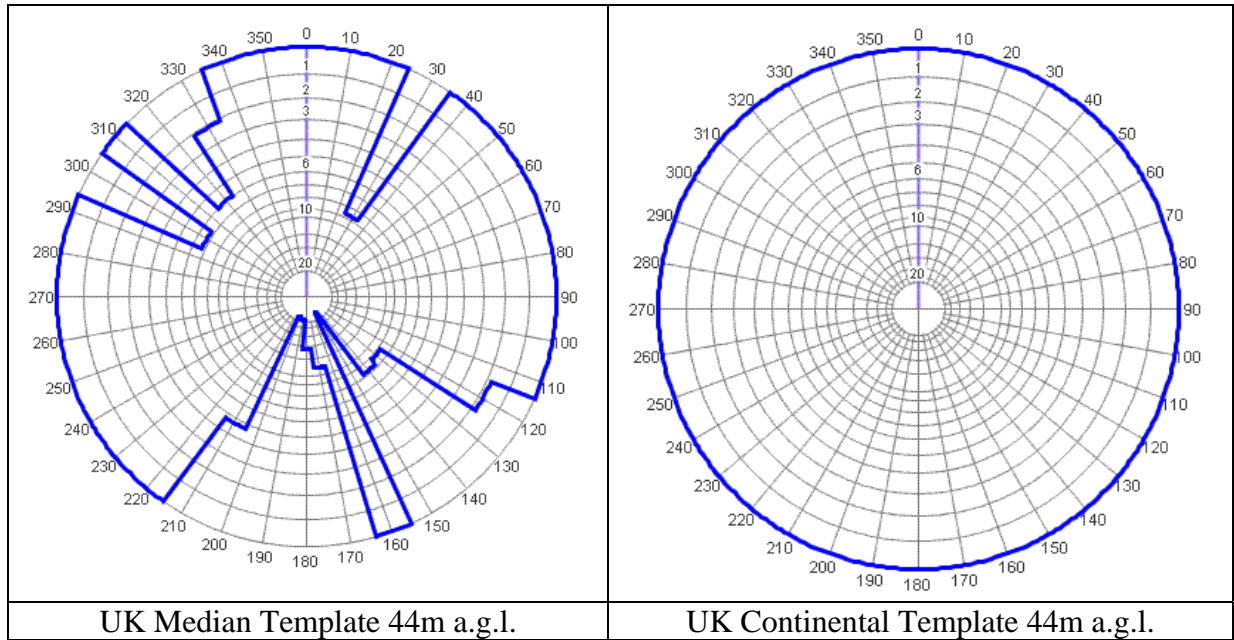


# ROSEMARKIE DTT Gross coverage

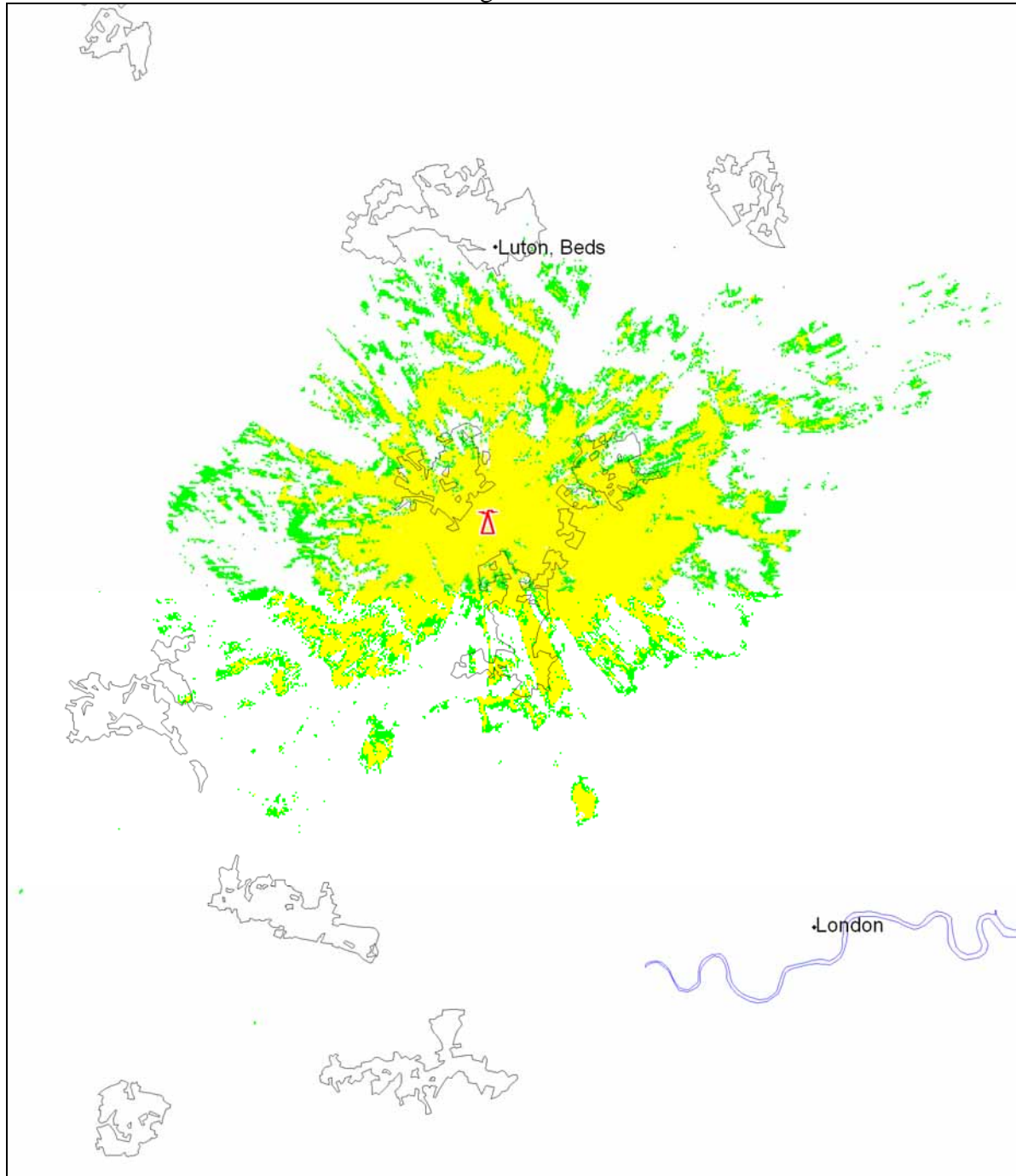


Gross coverage	72173 households
Analogue PSA Coverage	58932 households
Digital PSA Coverage	60857 households

**Station:** HEMEL HEMPSTEAD  
**Location:** TL 0879 0449  
**Site Height** 142 m a.m.s.l.  
**Channel** 49  
**Max ERP:** 30 dBW  
**Polarisation:** Vertical



# HEMEL HEMPSTEAD DTT Gross coverage

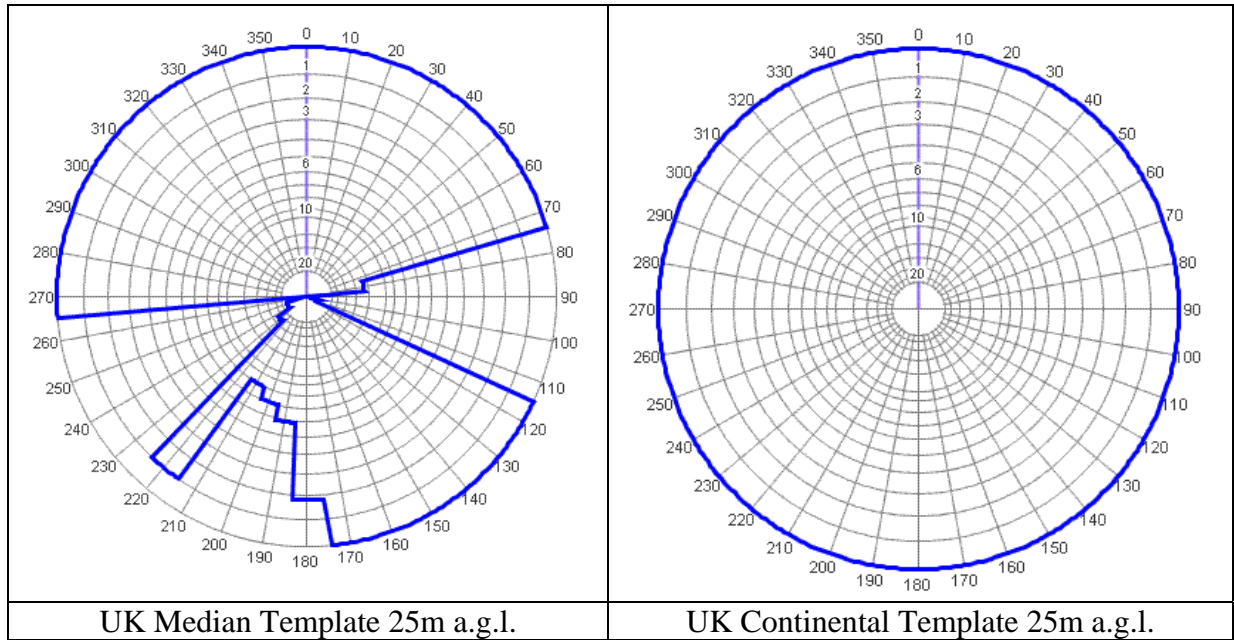


90% Locations and above  70% to 90% Locations

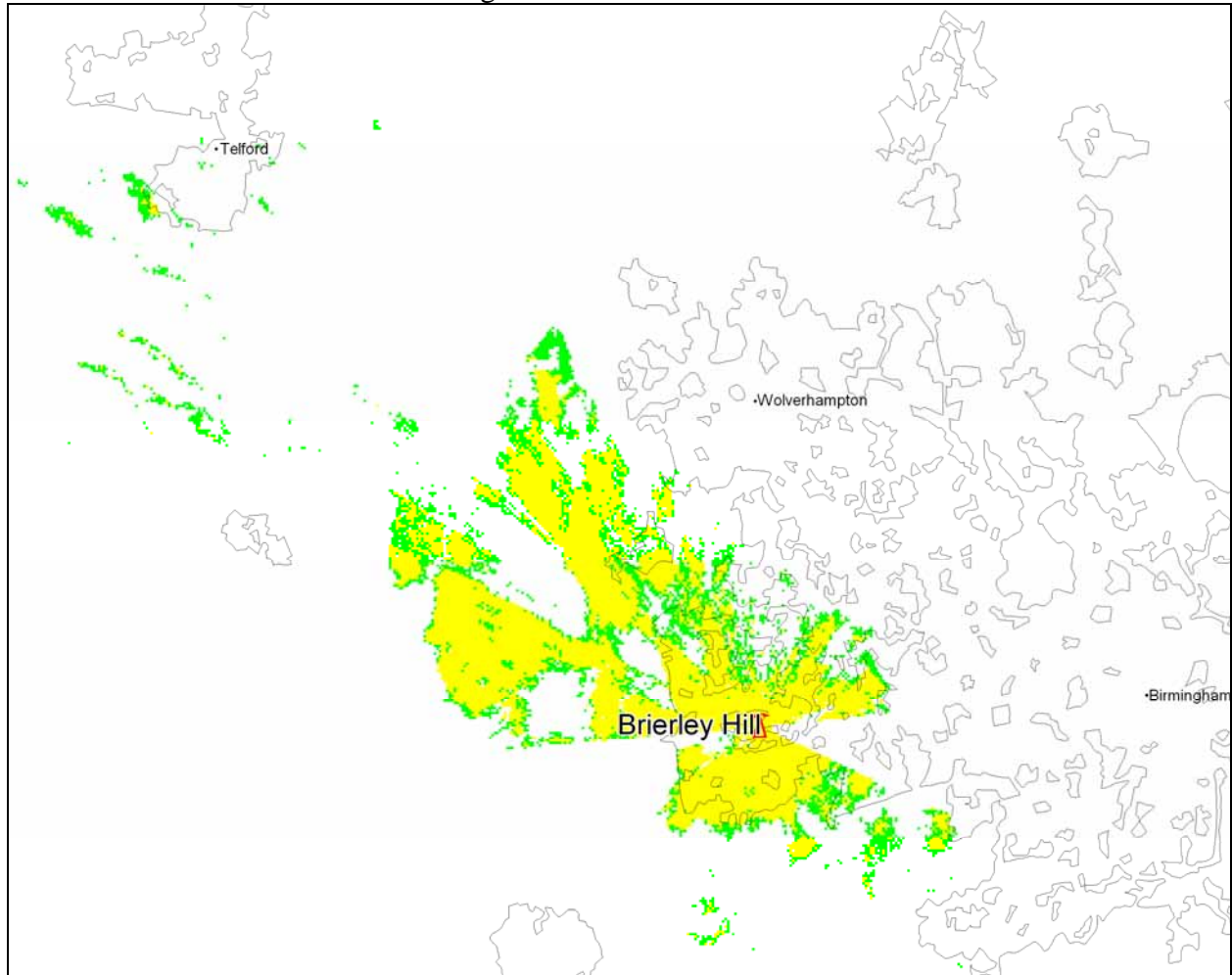
Gross coverage	175501 households
Analogue PSA Coverage	58271 households
Digital PSA Coverage	108066 households



**Station:** BRIERLEY HILL  
**Location:** SO 9160 8560  
**Site Height** 130 m a.m.s.l.  
**Channel** 56  
**Max ERP:** 30 dBW  
**Polarisation:** Vertical



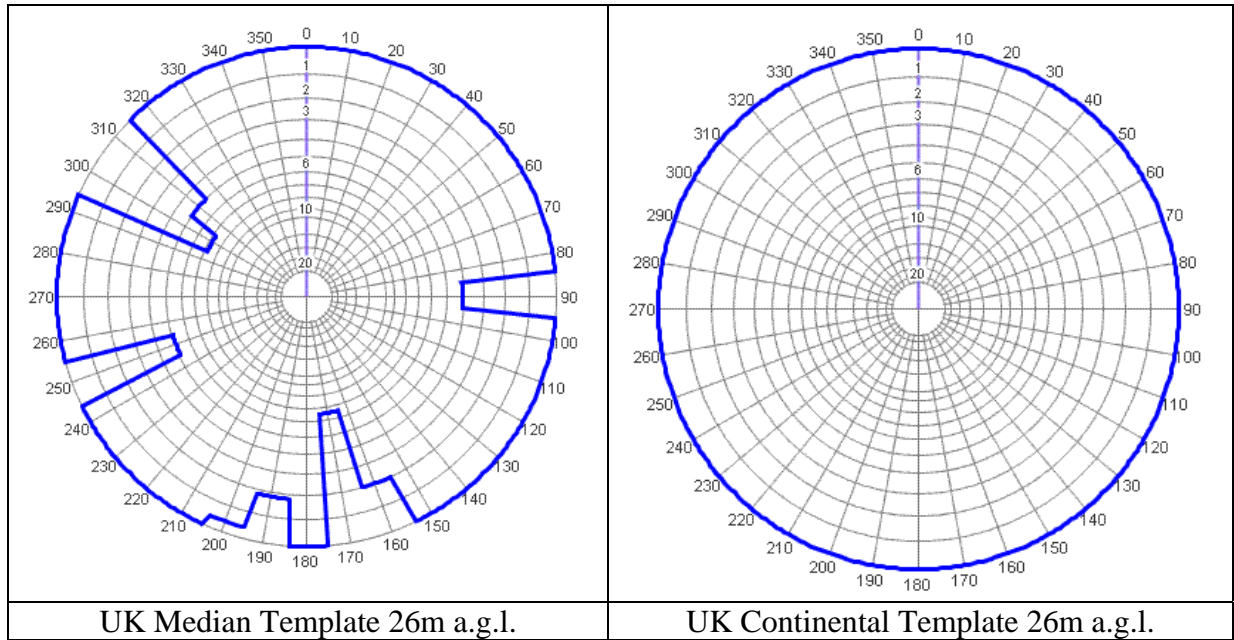
# BRIERLEY HILL DTT Gross coverage



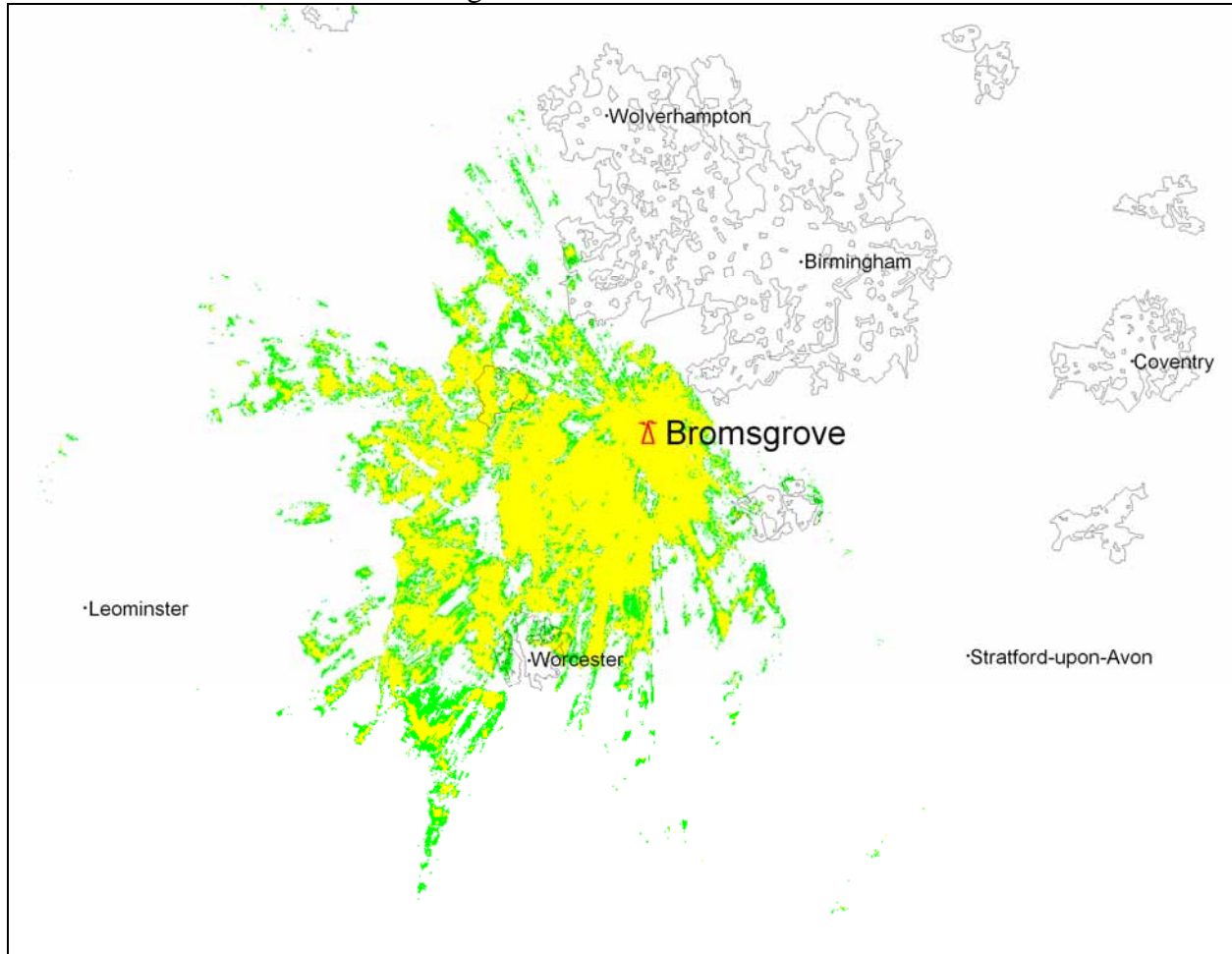
90% Locations and above  70% to 90% Locations

Gross coverage	74452 households
Analogue PSA Coverage	55645 households
Digital PSA Coverage	46362 households

**Station:** BROMSGROVE  
**Location:** SO 9477 7301  
**Site Height** 147 m a.m.s.l.  
**Channel** 29  
**Max ERP:** 30 dBW  
**Polarisation:** Vertical



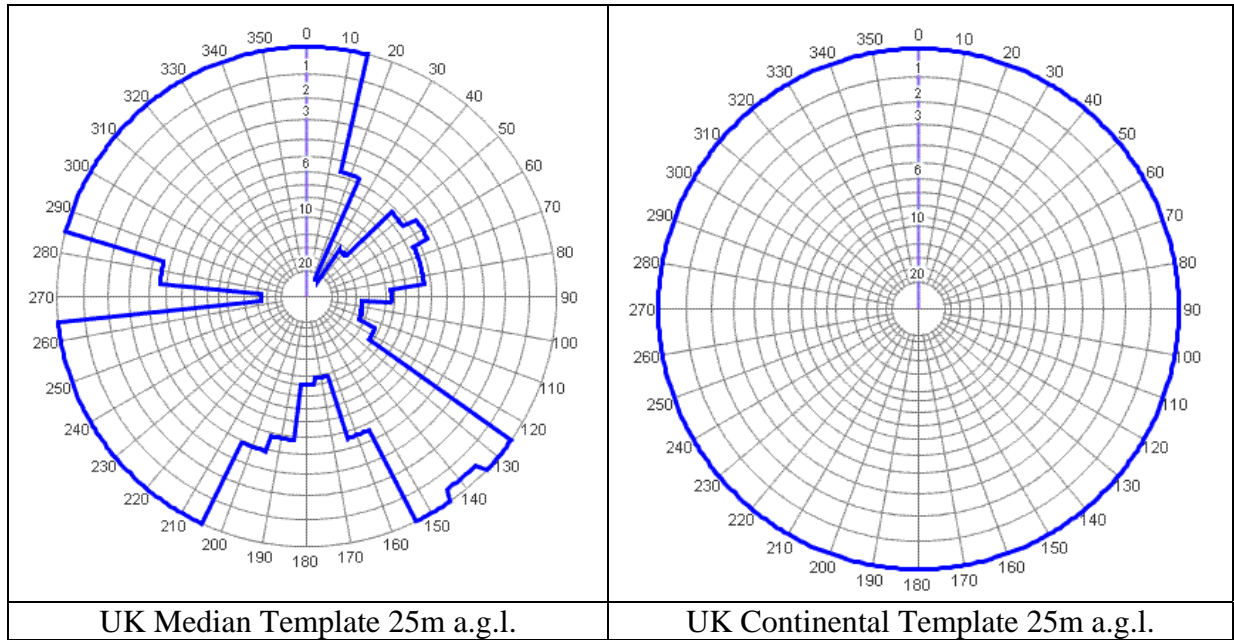
# BROMSGROVE DTT Gross coverage



90% Locations and above  70% to 90% Locations

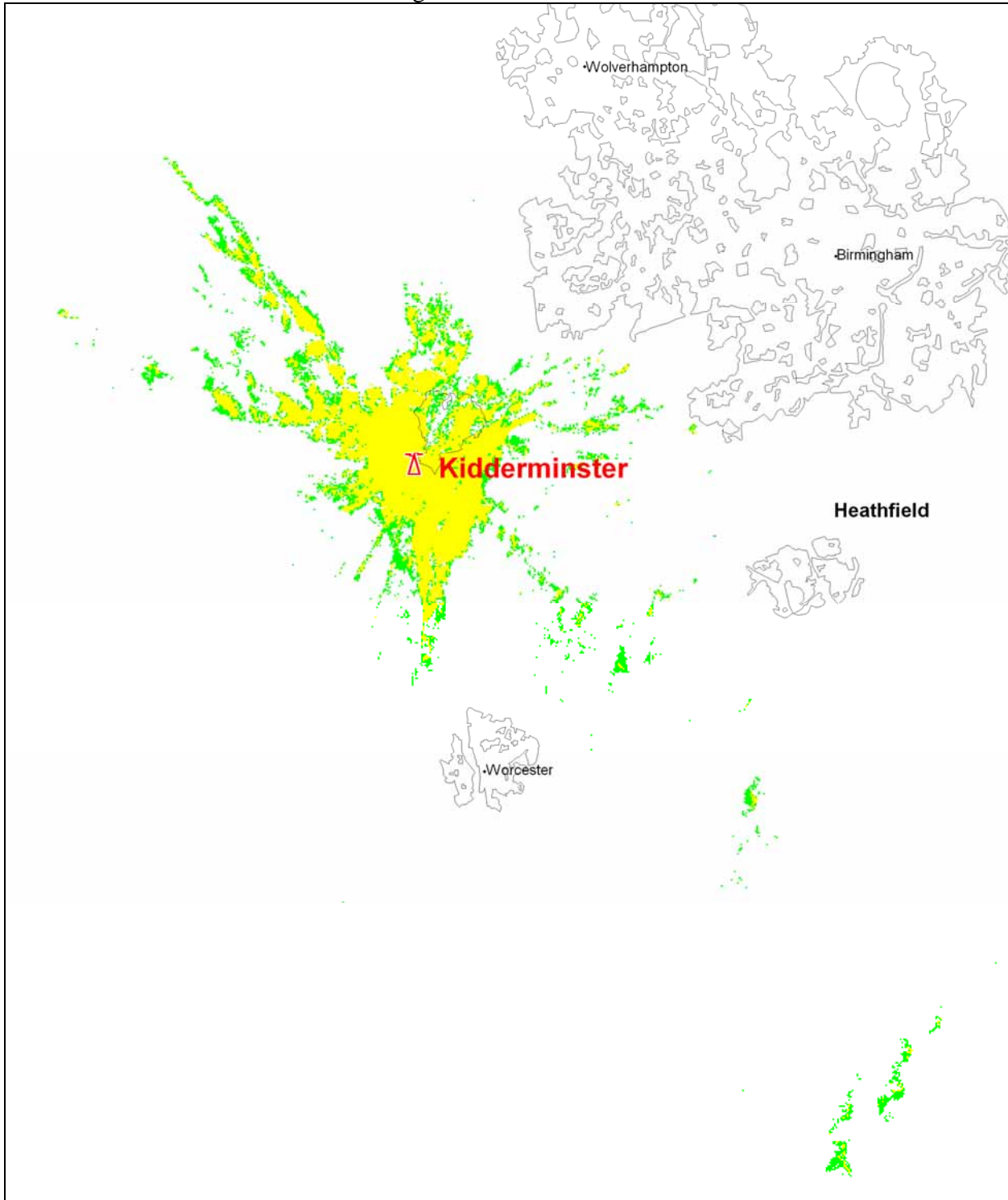
Gross coverage	112599 households
Analogue PSA Coverage	28733 households
Digital PSA Coverage	19134 households

**Station:** KIDDERMINSTER  
**Location:** SO 8084 7395  
**Site Height** 82 m a.m.s.l.  
**Channel** 56  
**Max ERP:** 30 dBW  
**Polarisation:** Vertical





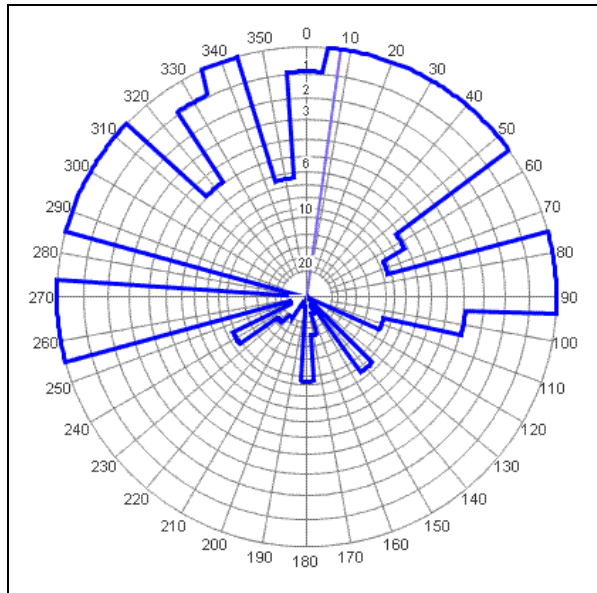
# KIDDERMINSTER DTT Gross coverage



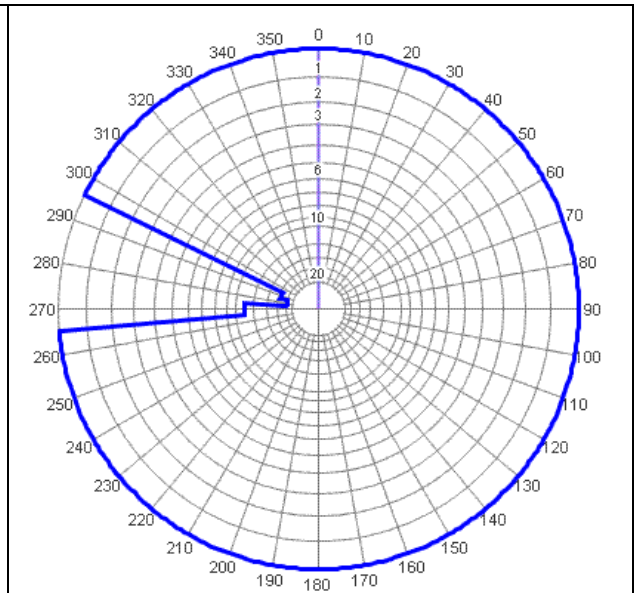
90% Locations and above  70% to 90% Locations

Gross coverage	37719 households
Analogue PSA Coverage	28265 households
Digital PSA Coverage	808 households

**Station:** STORETON  
**Location:** SJ 3144 8416  
**Site Height** 61 m a.m.s.l.  
**Channel** 30  
**Max ERP:** 30 dBW  
**Polarisation:** Vertical

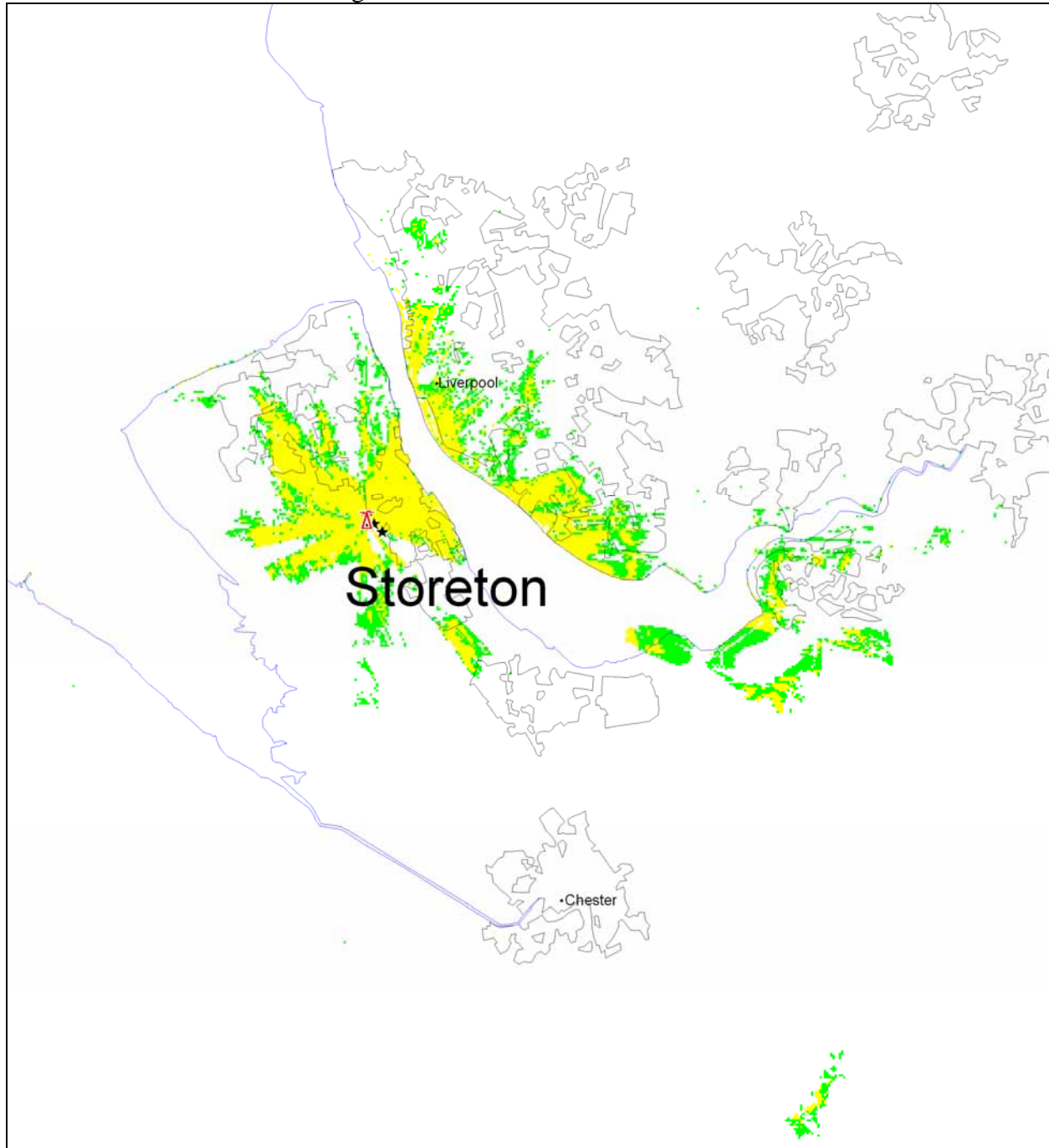


UK Median Template 24m a.g.l.



UK Continental Template 24m a.g.l.

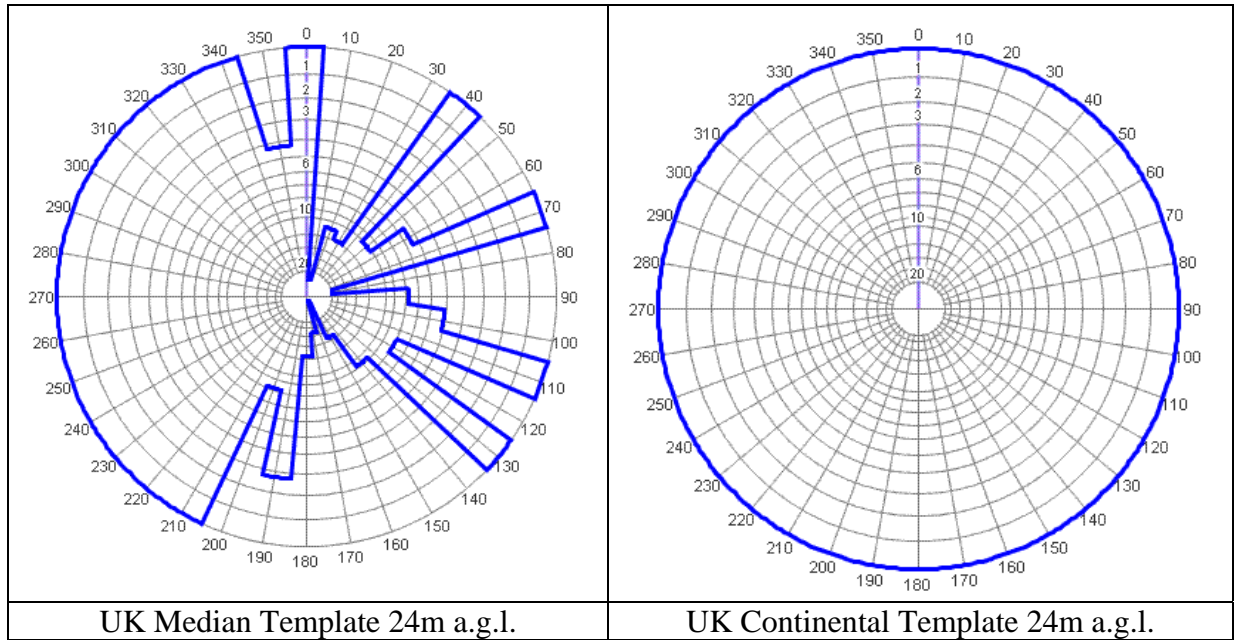
# STORETON DTT Gross coverage



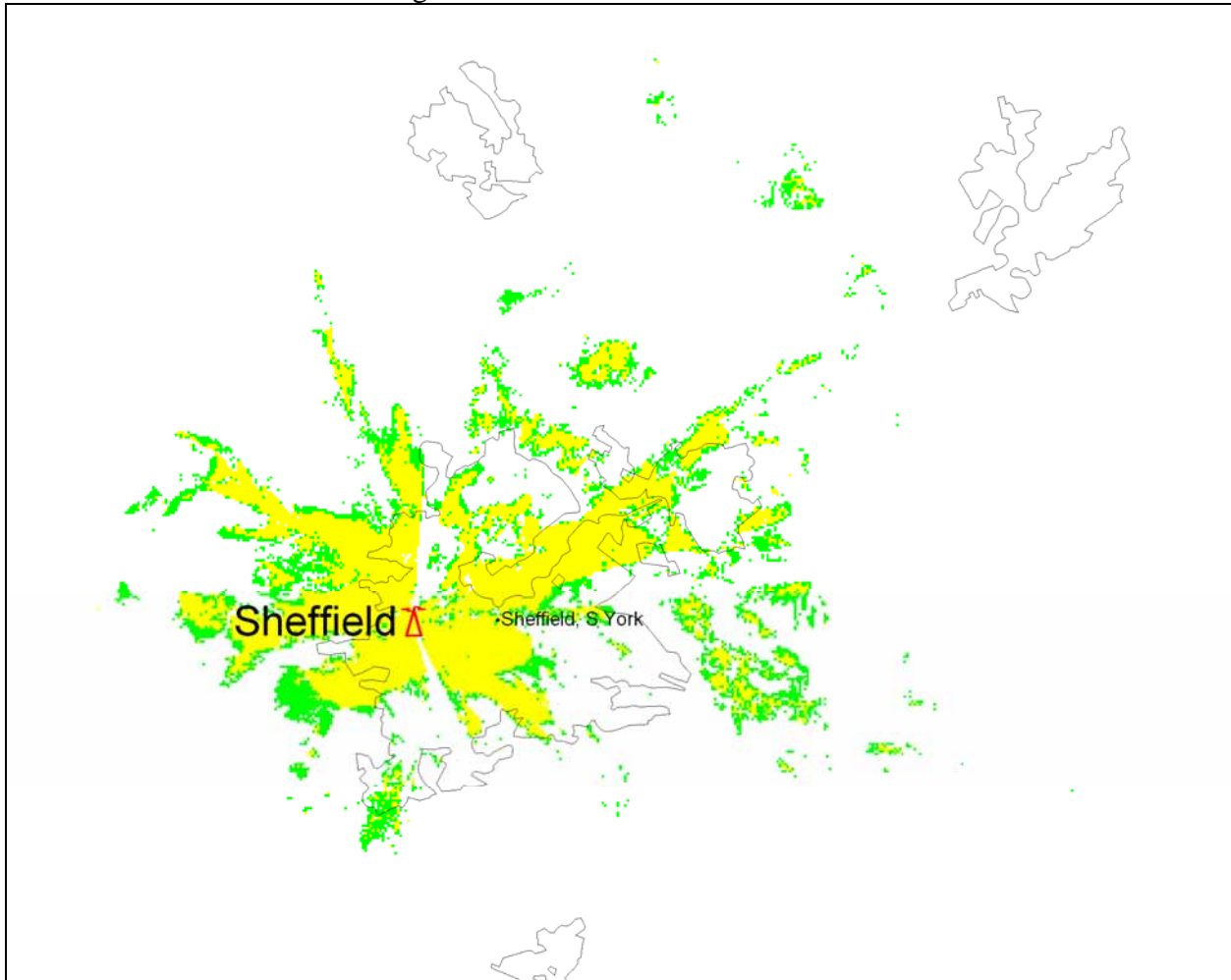
90% Locations and above        70% to 90% Locations   


Gross coverage	115065 households
Analogue PSA Coverage	34177 households
Digital PSA Coverage	17793 households

**Station:** SHEFFIELD  
**Location:** SK 3244 8706  
**Site Height** 239 m a.m.s.l.  
**Channel** 26  
**Max ERP:** 30 dBW  
**Polarisation:** Vertical



# SHEFFIELD DTT Gross coverage

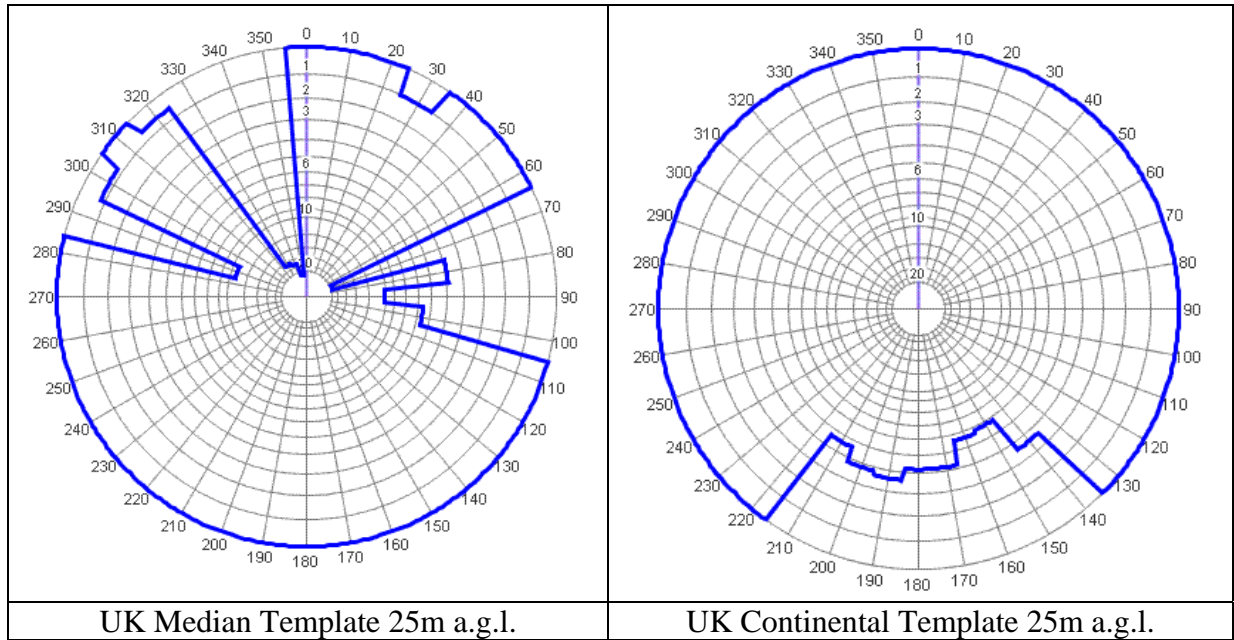


90% Locations and above      70% to 90% Locations   

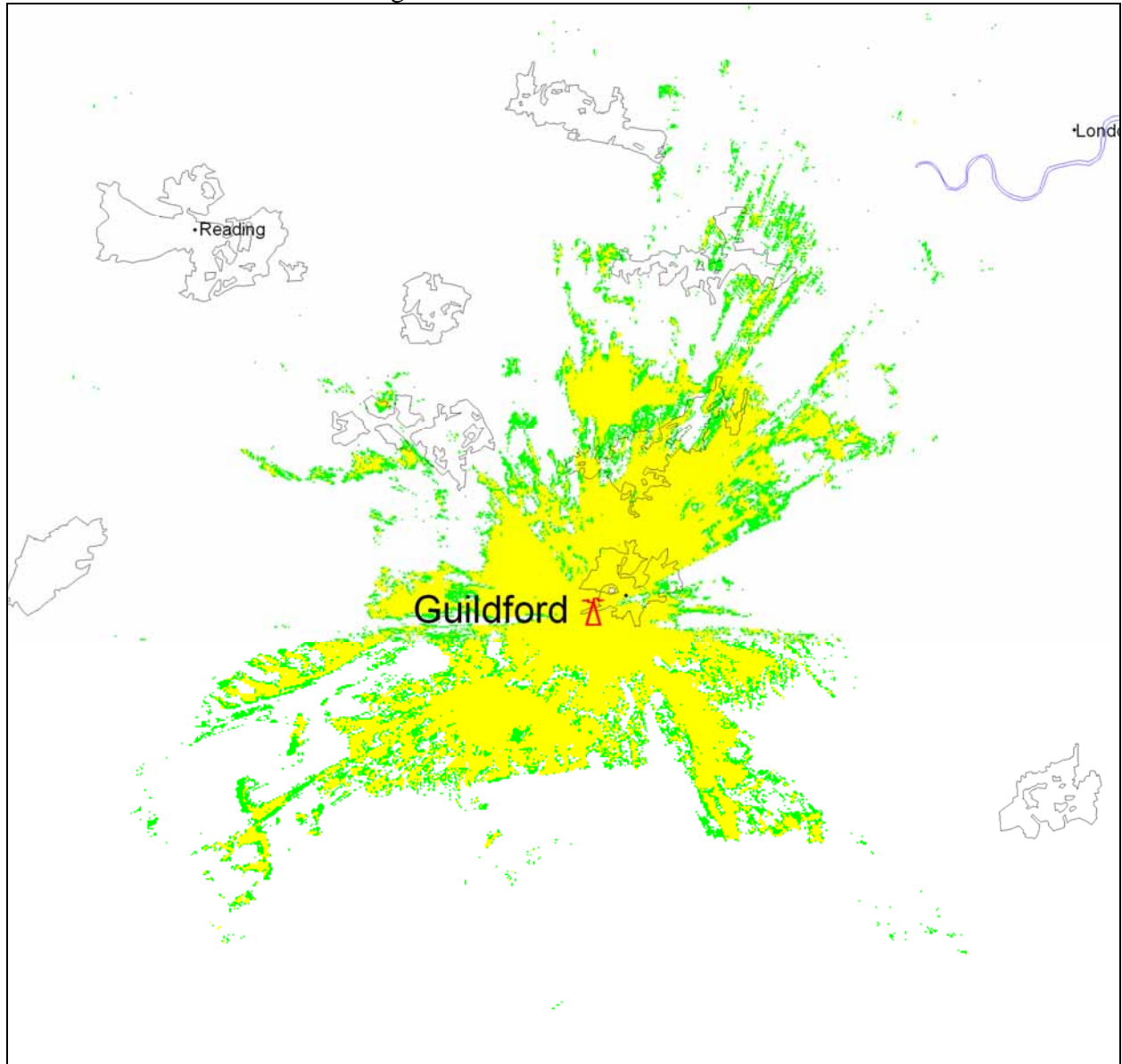
Gross coverage	119227 households
Analogue PSA Coverage	82137 households
Digital PSA Coverage	71297 households



**Station:** GUILDFORD  
**Location:** SU 9747 4861  
**Site Height** 142 m a.m.s.l.  
**Channel** 54  
**Max ERP:** 30 dBW  
**Polarisation:** Vertical



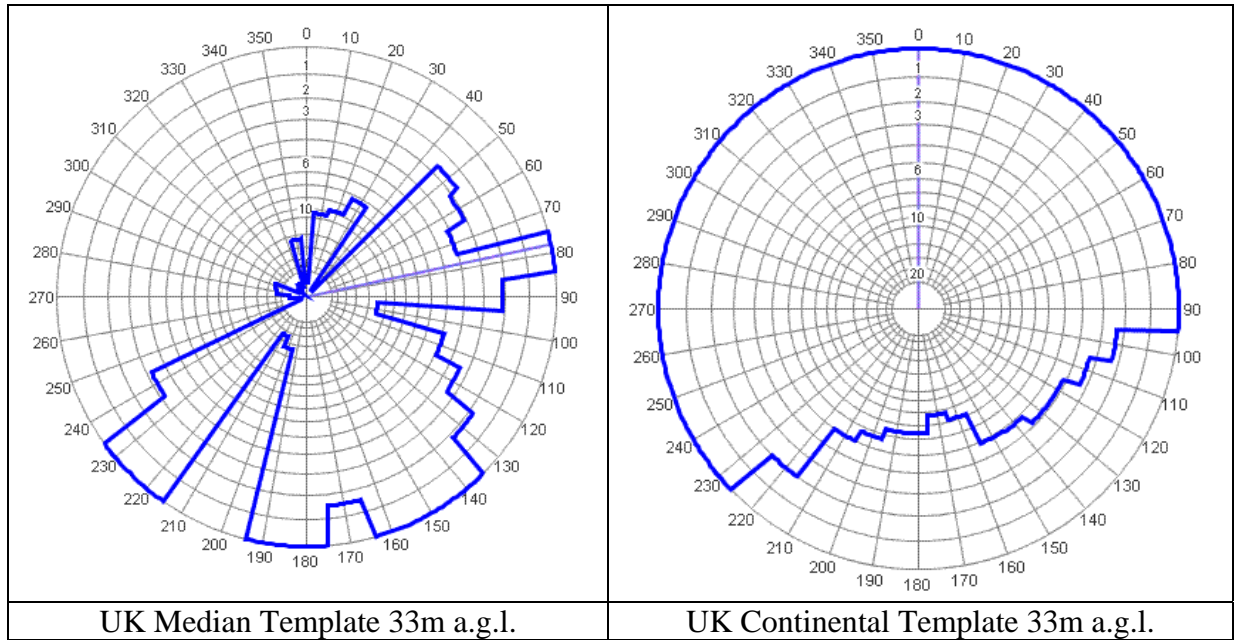
# GUILDFORD DTT Gross coverage



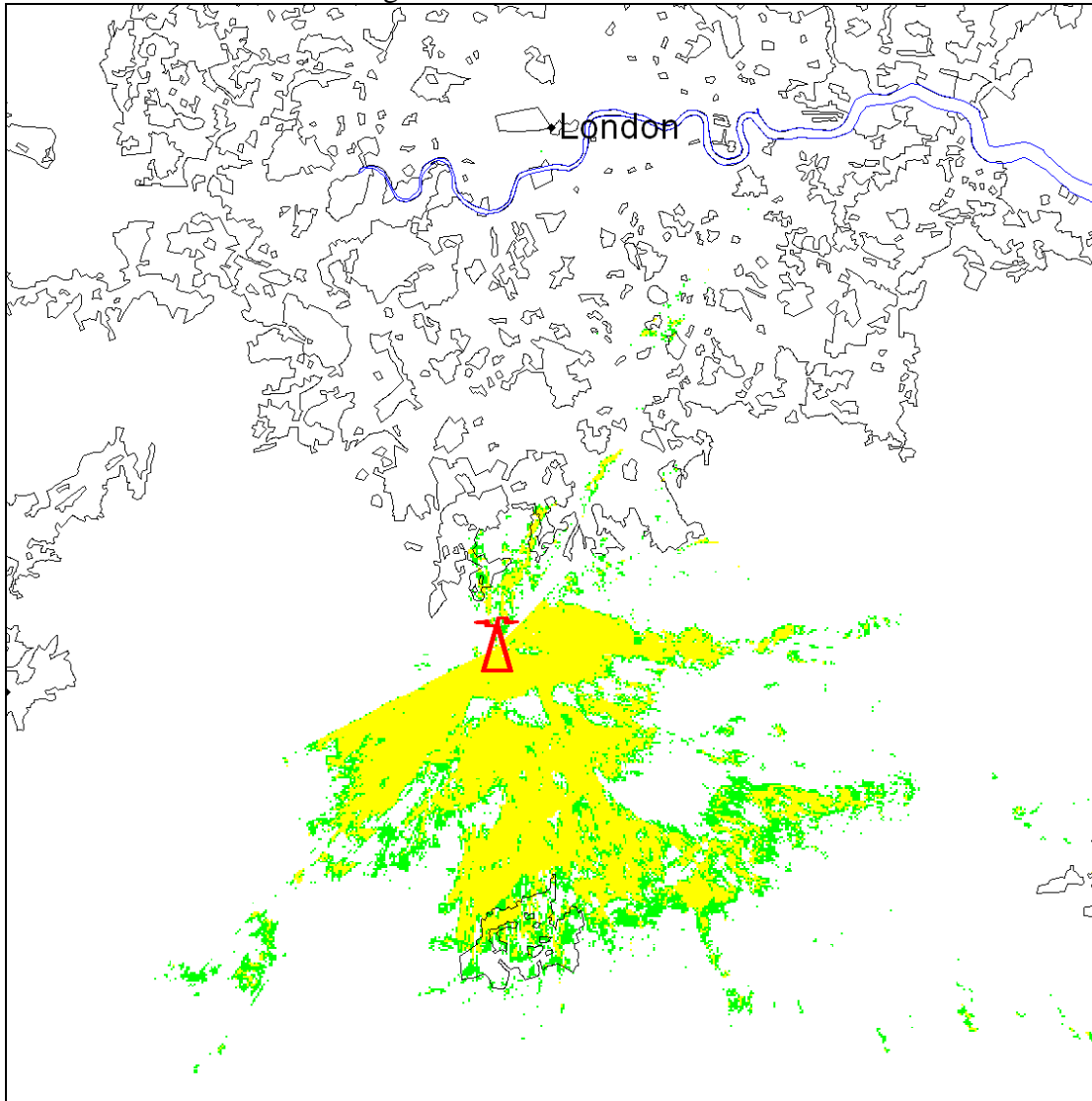
90% Locations and above  70% to 90% Locations

Gross coverage	161078 households
Analogue PSA Coverage	43565 households
Digital PSA Coverage	49415 households

**Station:** REIGATE  
**Location:** TQ 2564 5213  
**Site Height:** 234 m a.m.s.l.  
**Channel:** 51  
**Max ERP:** 30 dBW  
**Polarisation:** Vertical



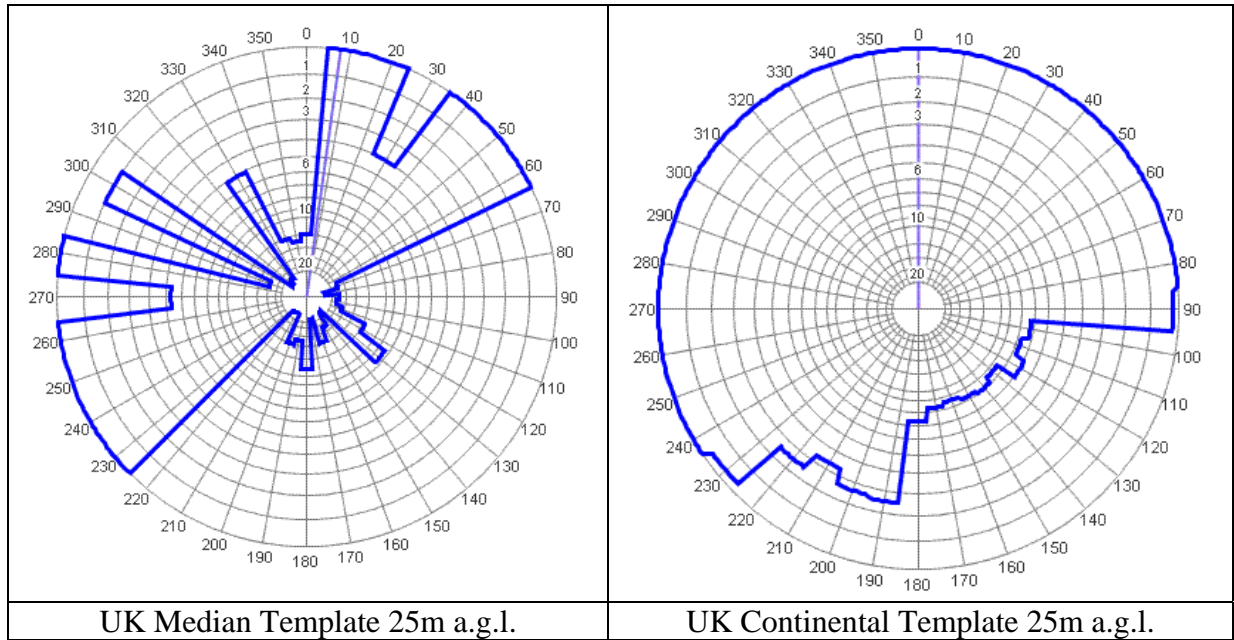
# REIGATE DTT Gross coverage



90% Locations and above    70% to 90% Locations

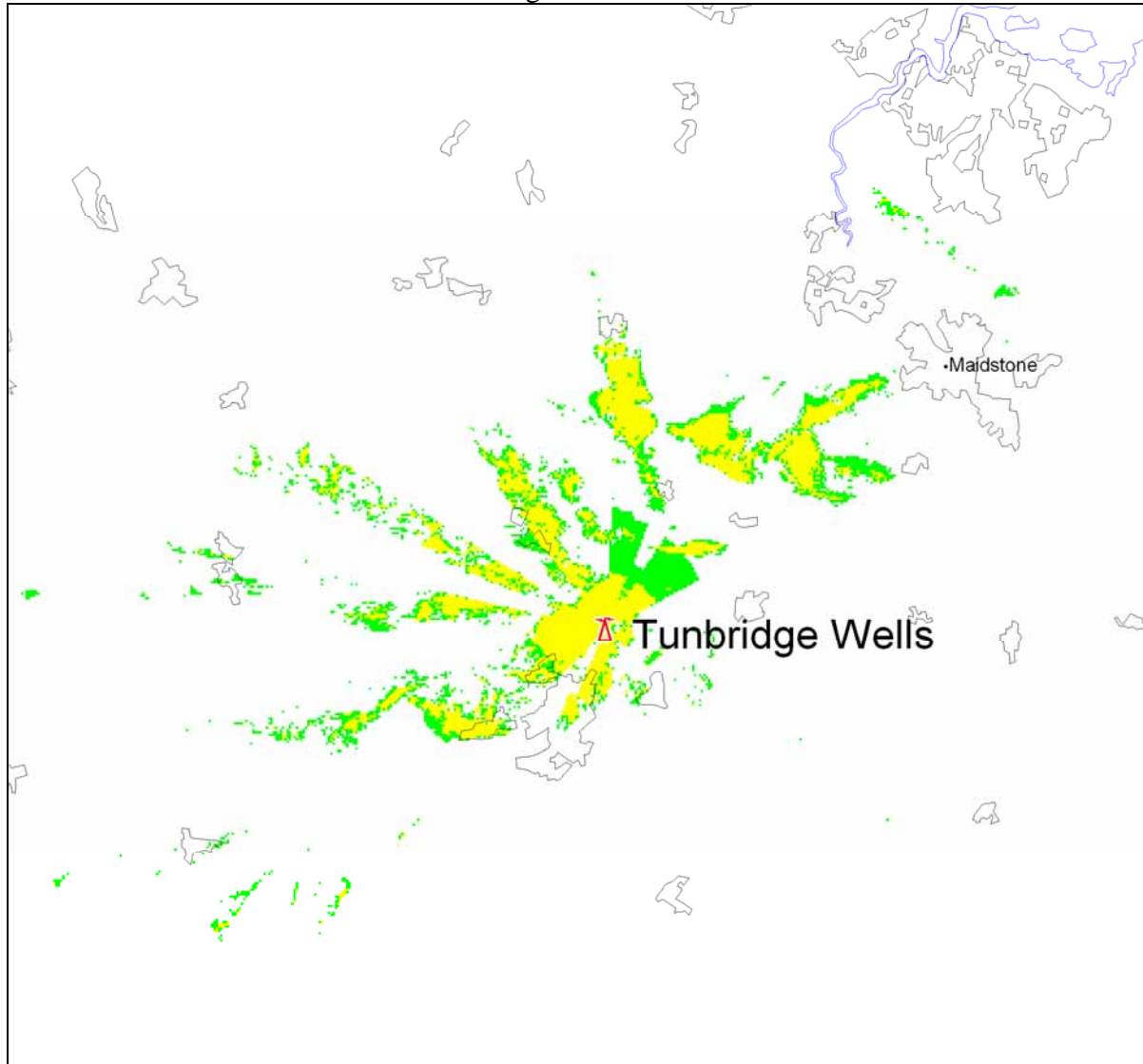
Gross coverage	79808 households
Analogue PSA Coverage	54650 households
Digital PSA Coverage	53157 households

**Station:** TUNBRIDGE WELLS  
**Location:** TQ 6073 4399  
**Site Height:** 124 m a.m.s.l.  
**Channel:** 51  
**Max ERP:** 30 dBW  
**Polarisation:** Vertical





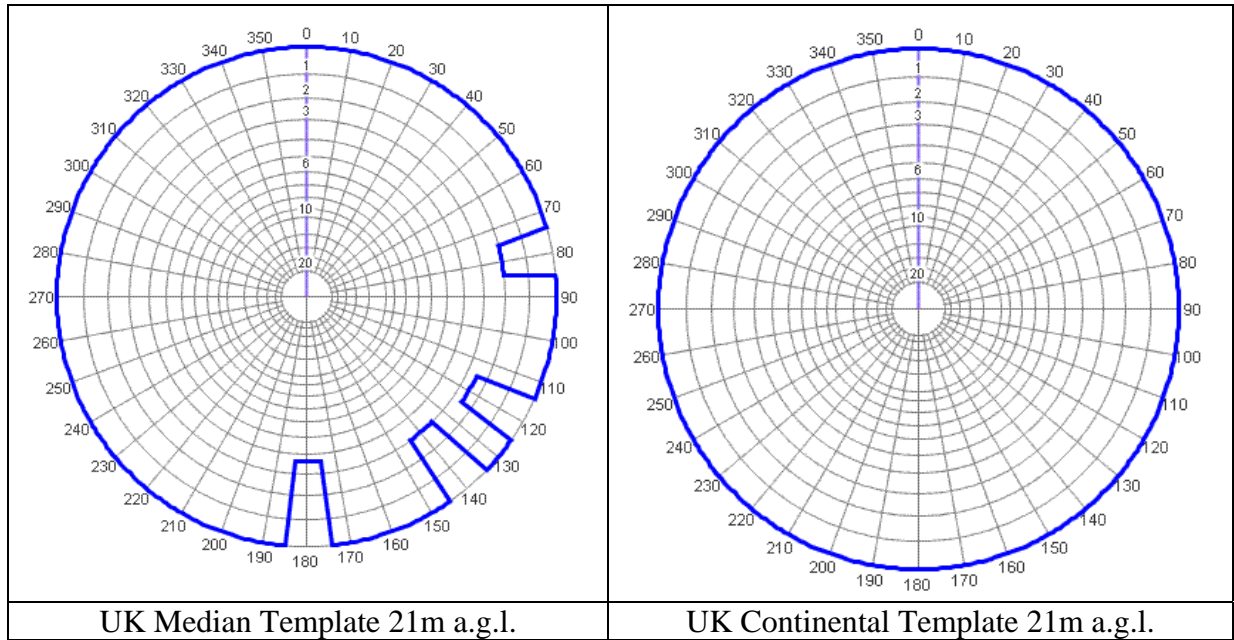
# TUNBRIDGE WELLS DTT Gross coverage



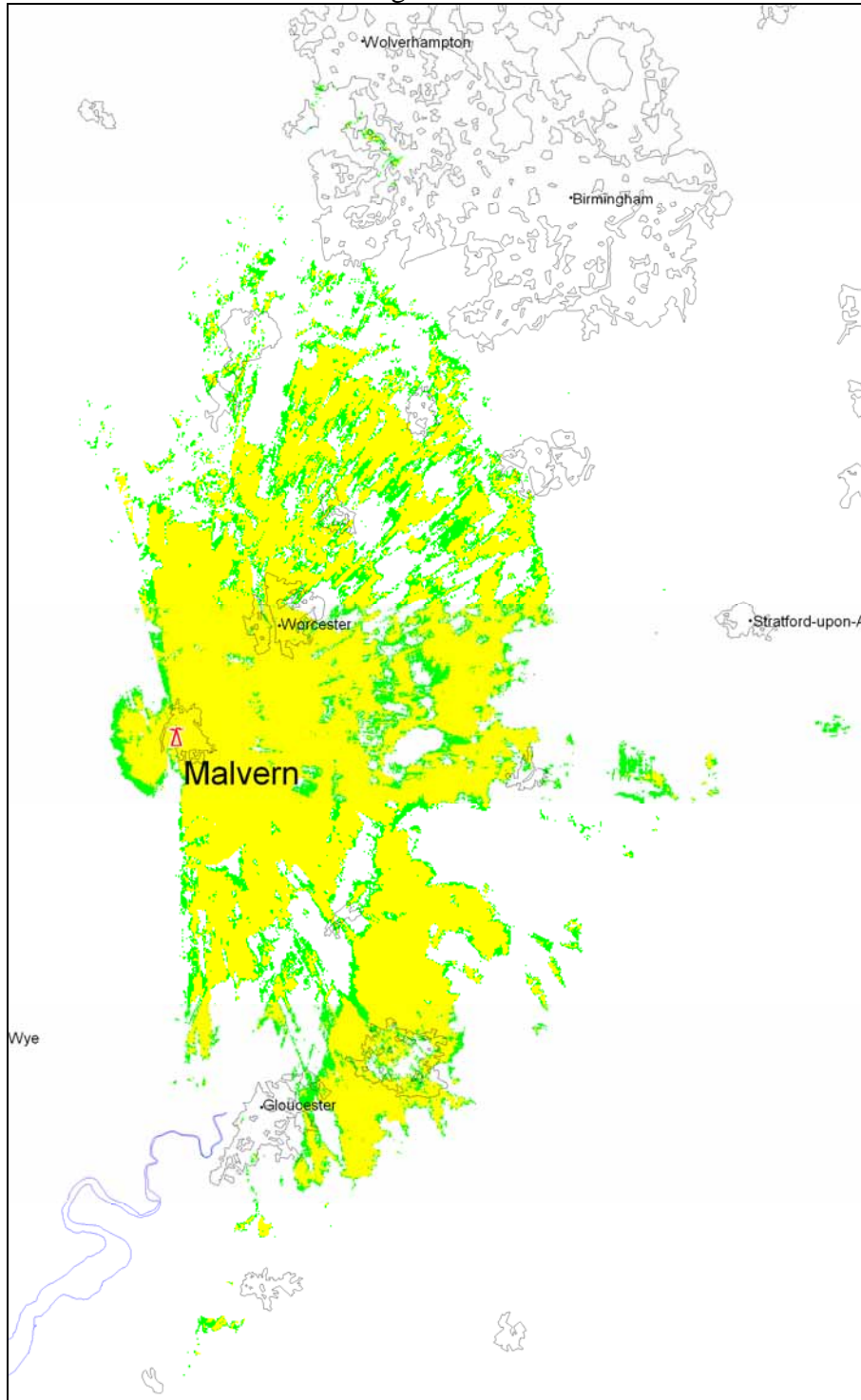
90% Locations and above  70% to 90% Locations

Gross coverage	19877 households
Analogue PSA Coverage	17293 households
Digital PSA Coverage	16594 households

**Station:** MALVERN  
**Location:** SO 7749 4643  
**Site Height** 161 m a.m.s.l.  
**Channel** 51  
**Max ERP:** 30 dBW  
**Polarisation:** Vertical



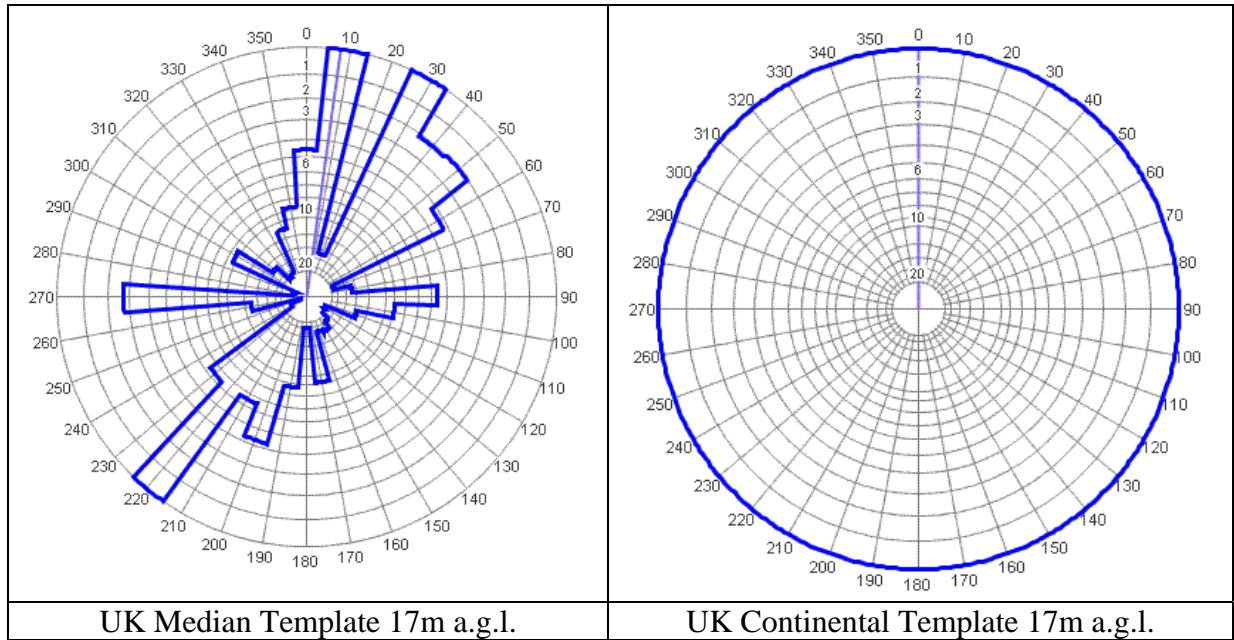
# MALVERN DTT Gross coverage



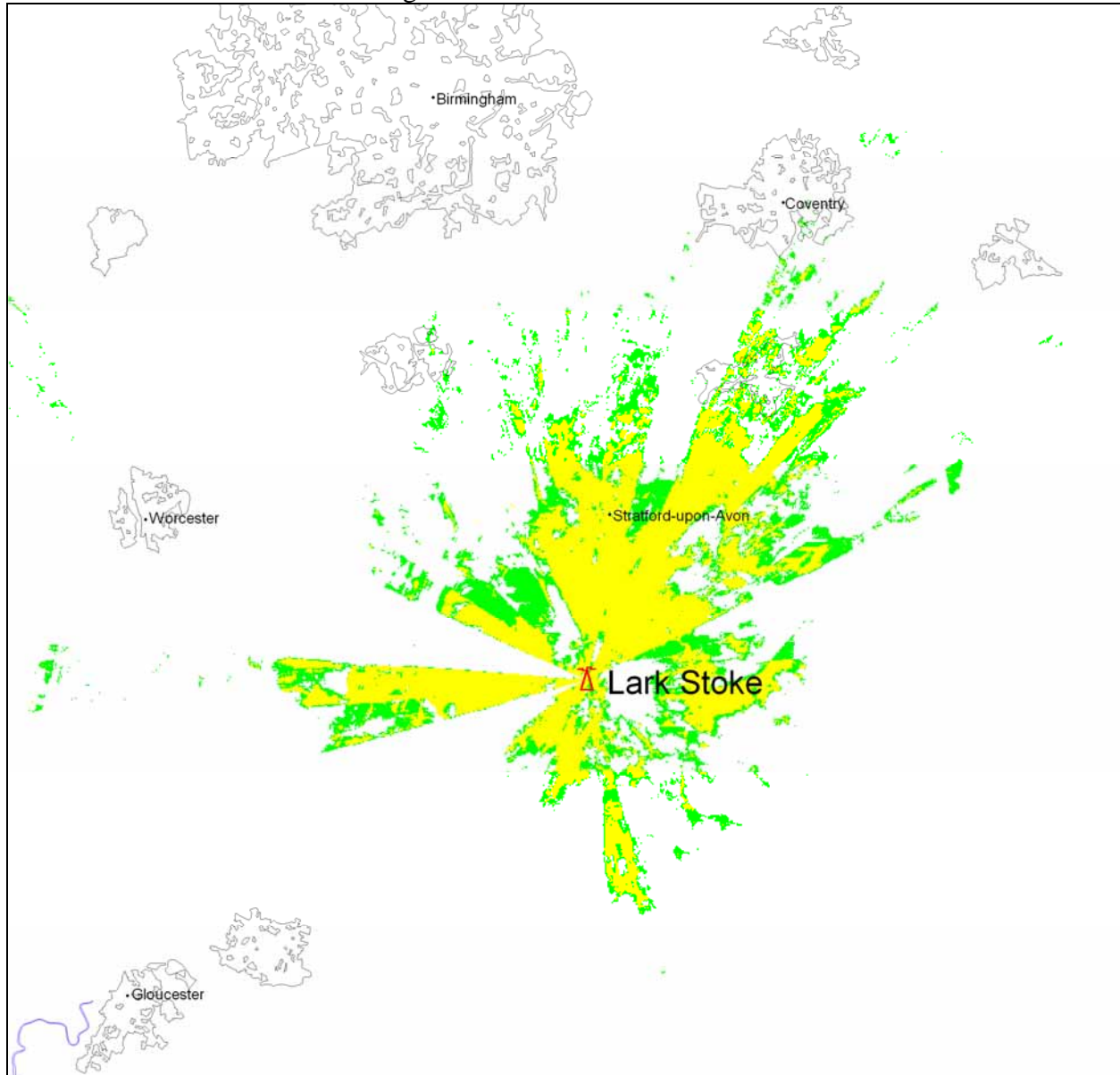
90% Locations and above 70% to 90% Locations

Gross coverage	155758 households
Analogue PSA Coverage	54898 households
Digital PSA Coverage	48644 households

**Station:** LARK STOKE  
**Location:** SP 1870 4262  
**Site Height** 260 m a.m.s.l.  
**Channel** 48  
**Max ERP:** 30 dBW  
**Polarisation:** Vertical



# LARK STOKE DTT Gross coverage

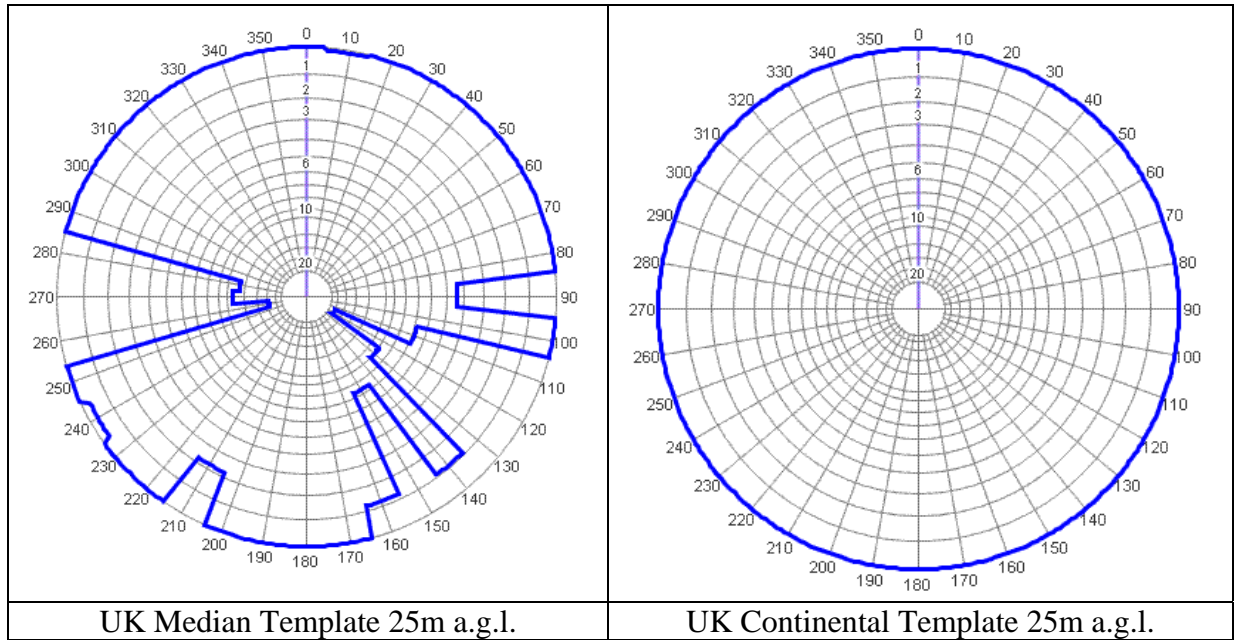


90% Locations and above  70% to 90% Locations

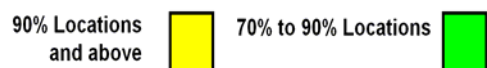
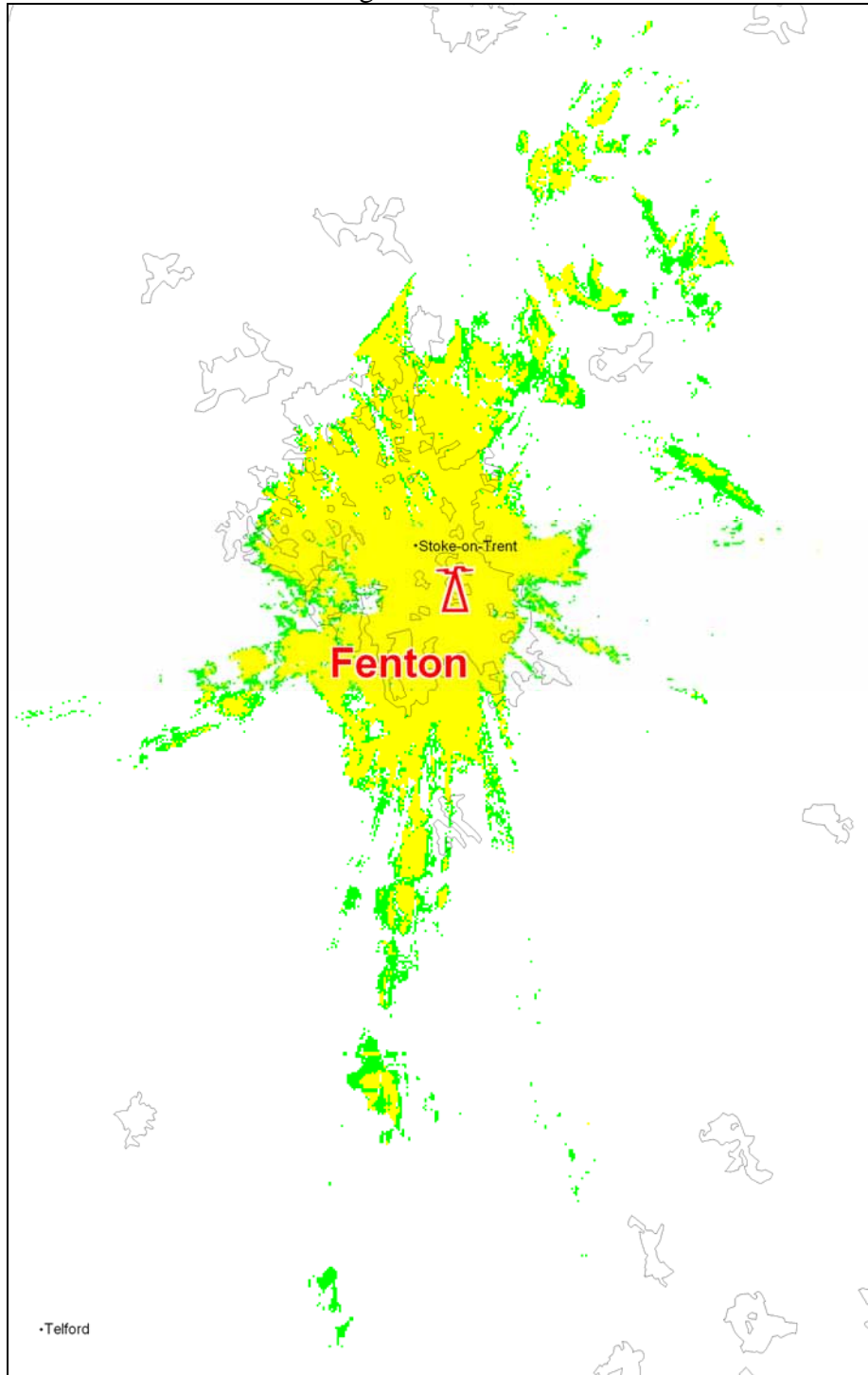
Gross coverage	56787 households
Analogue PSA Coverage	26982 households
Digital PSA Coverage	33414 households



**Station:** FENTON  
**Location:** SJ 9029 4510  
**Site Height** 201 m a.m.s.l.  
**Channel** 29  
**Max ERP:** 30 dBW  
**Polarisation:** Vertical

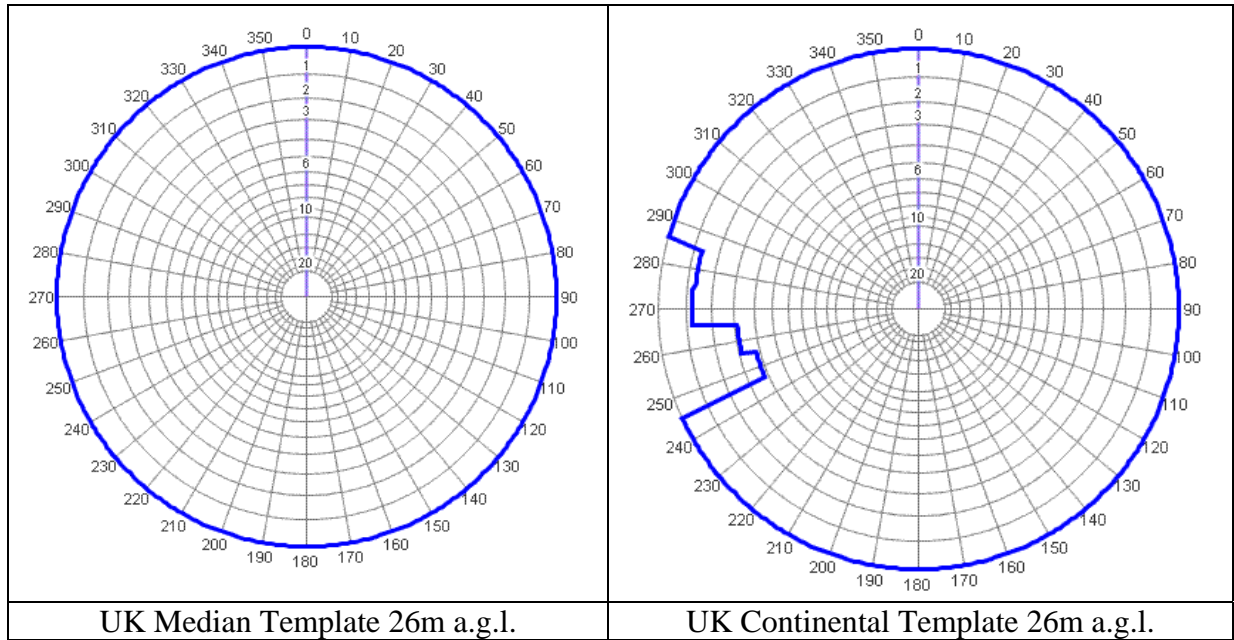


# FENTON DTT Gross coverage

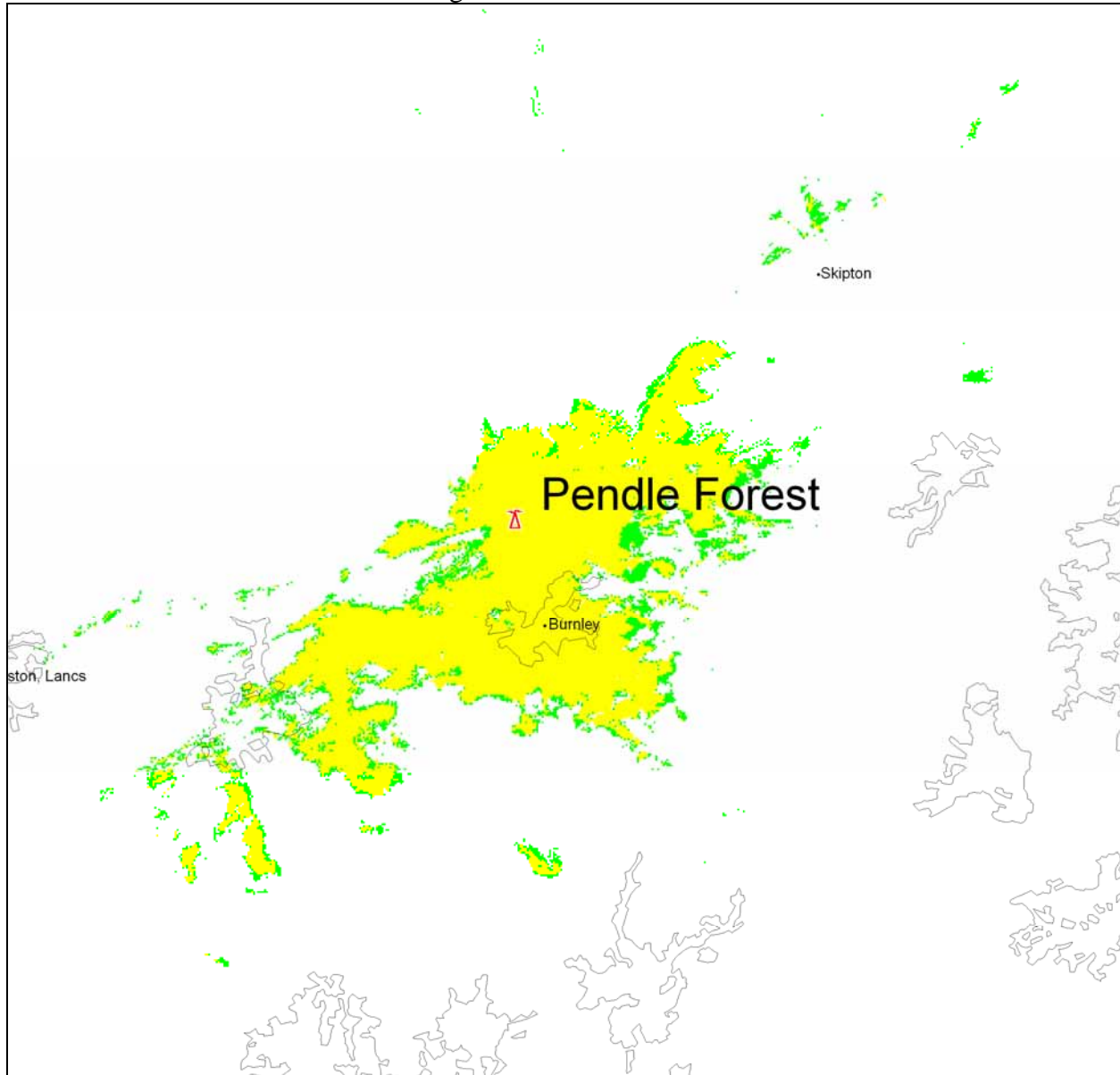


Gross coverage	147694 households
Analogue PSA Coverage	119155 households
Digital PSA Coverage	103907 households

**Station:** PENDLE FOREST  
**Location:** SD 8257 3838  
**Site Height:** 273 m a.m.s.l.  
**Channel:** 30  
**Max ERP:** 30 dBW  
**Polarisation:** Vertical



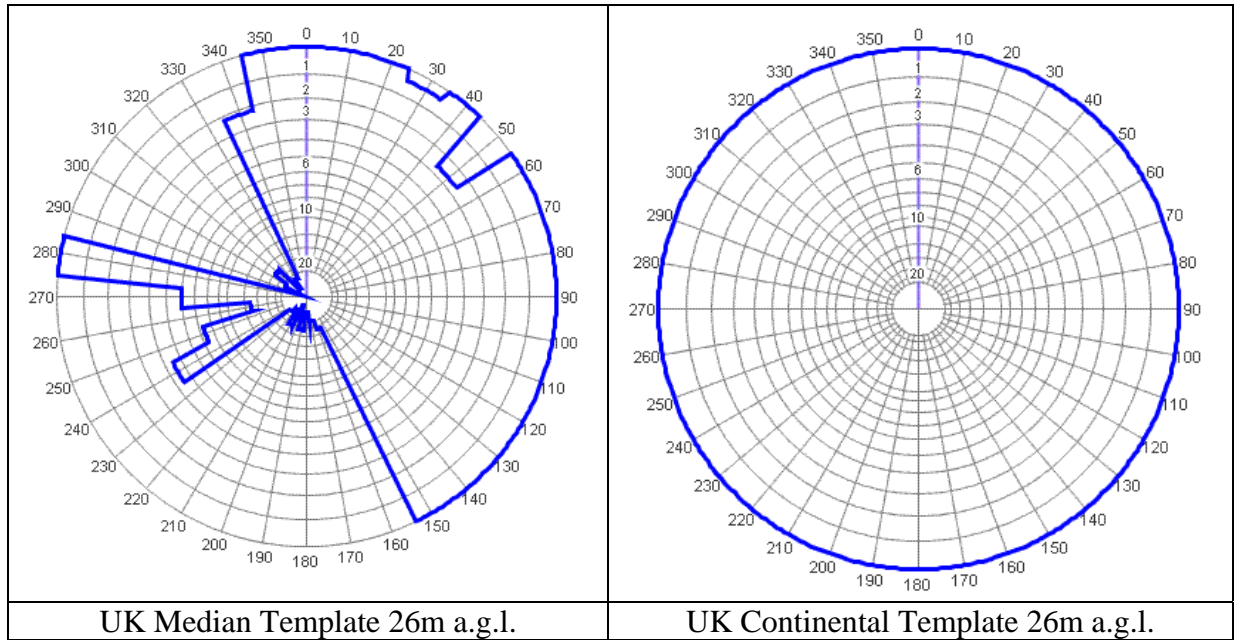
# PENDLE FOREST DTT Gross coverage



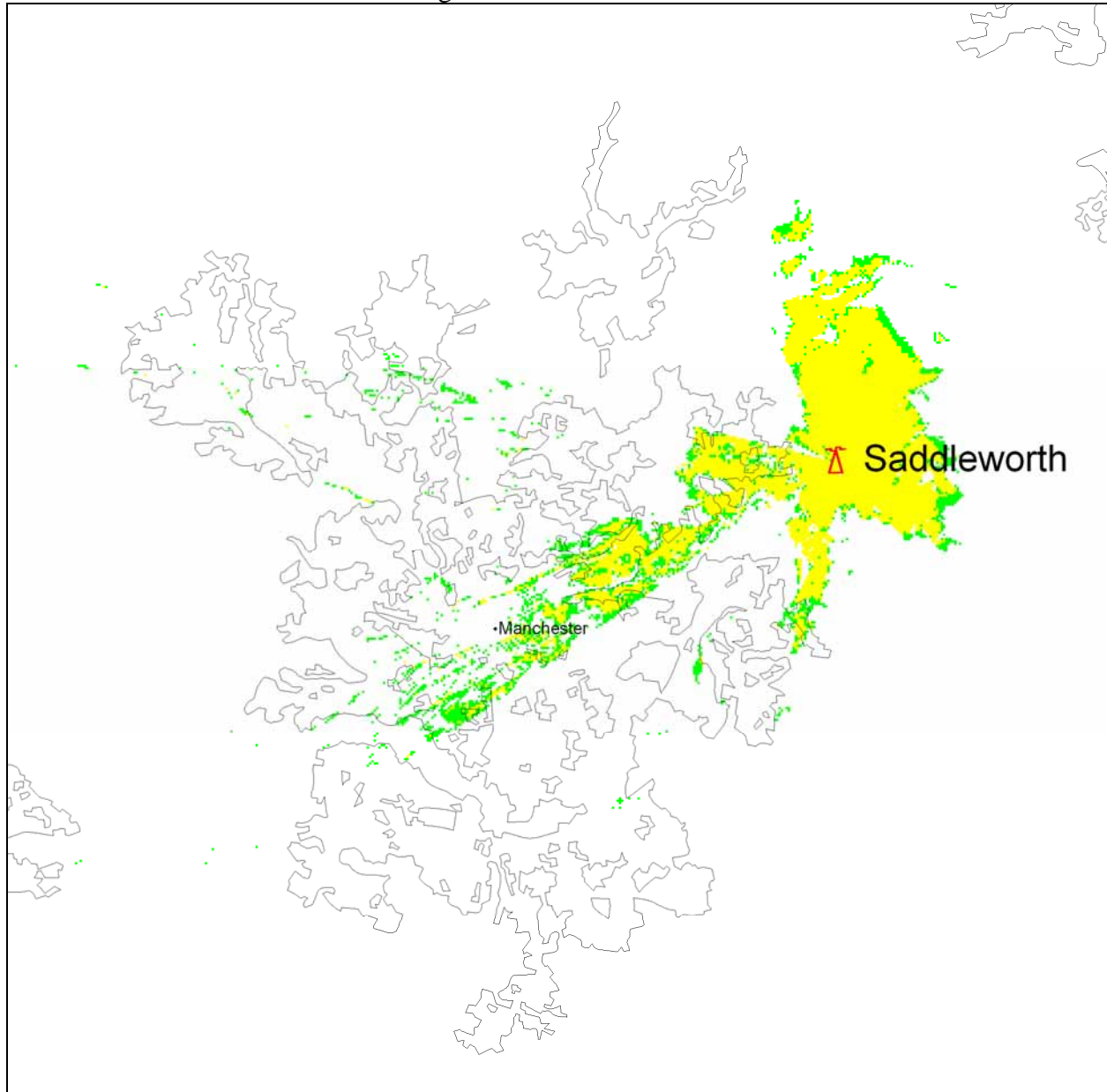
90% Locations and above  70% to 90% Locations

Gross coverage	109735 households
Analogue PSA Coverage	42506 households
Digital PSA Coverage	54080 households

**Station:** SADDLEWORTH  
**Location:** SD 9873 0499  
**Site Height** 340 m a.m.s.l.  
**Channel** 43  
**Max ERP:** 30 dBW  
**Polarisation:** Vertical



# SADDLEWORTH DTT Gross coverage

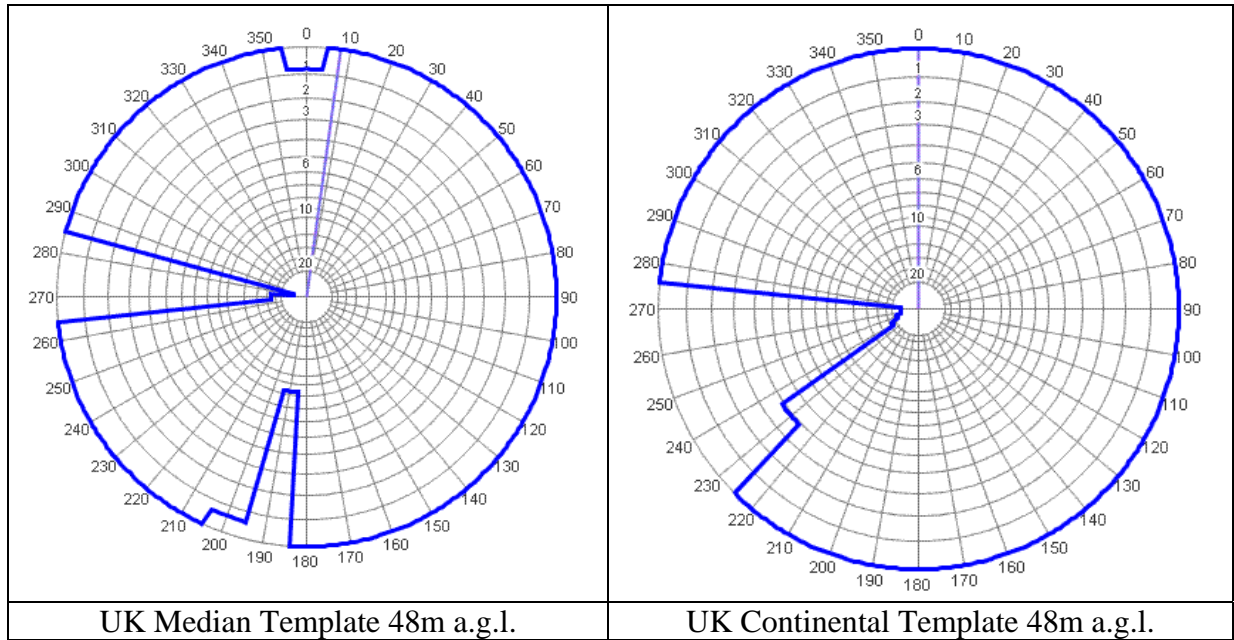


90% Locations and above  70% to 90% Locations

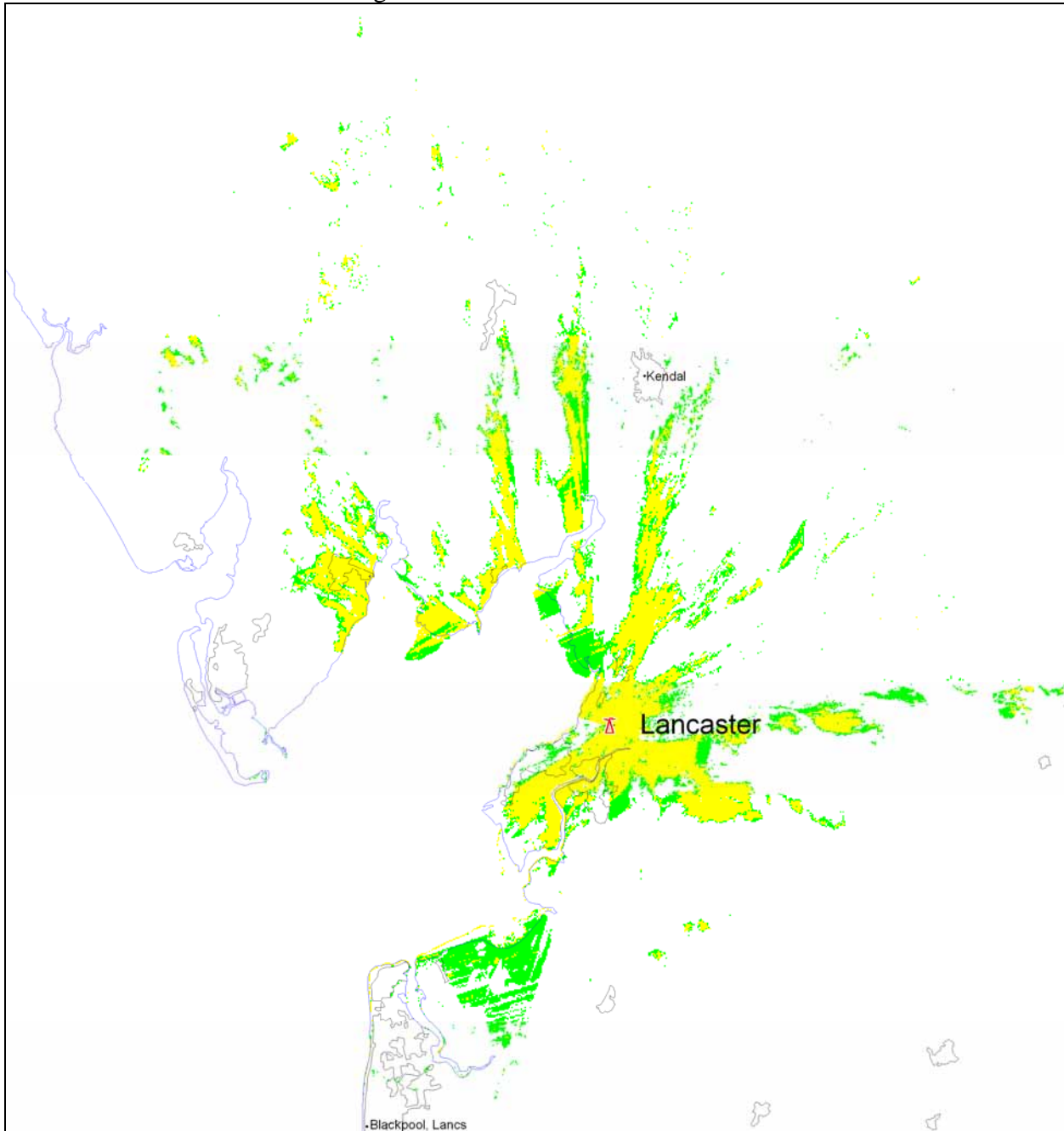
Gross coverage	82286 households
Analogue PSA Coverage	10180 households
Digital PSA Coverage	18535 households



**Station:** LANCASTER  
**Location:** SD 4908 6622  
**Site Height** 88 m a.m.s.l.  
**Channel** 30  
**Max ERP:** 30 dBW  
**Polarisation:** Vertical



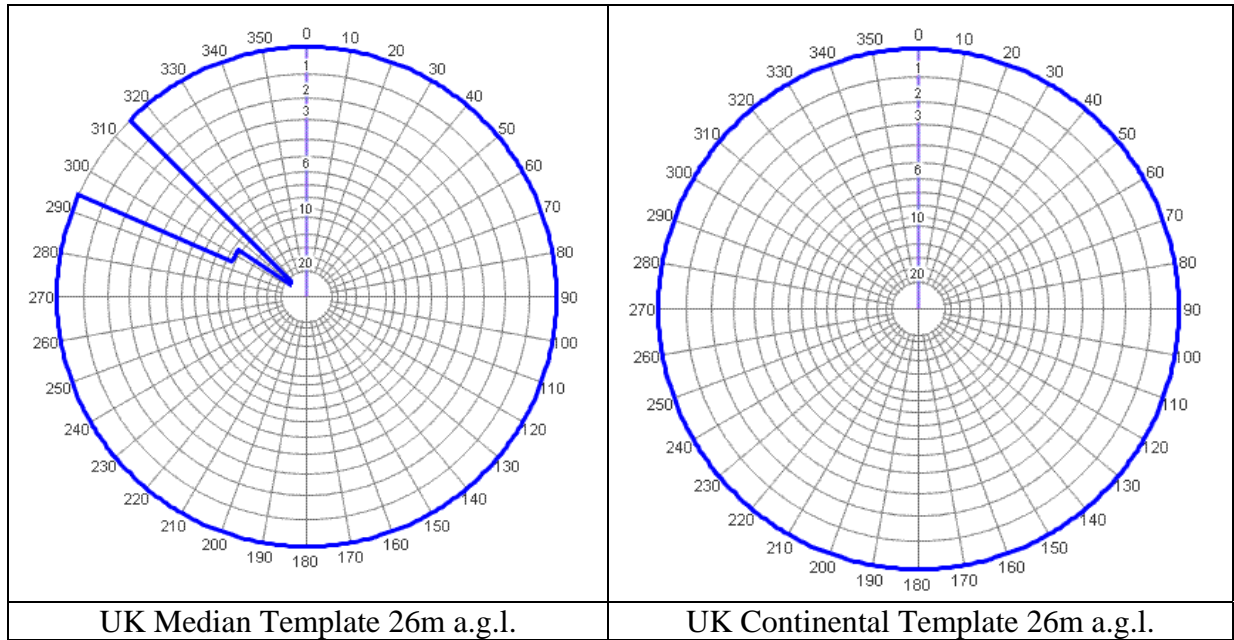
# LANCASTER DTT Gross coverage



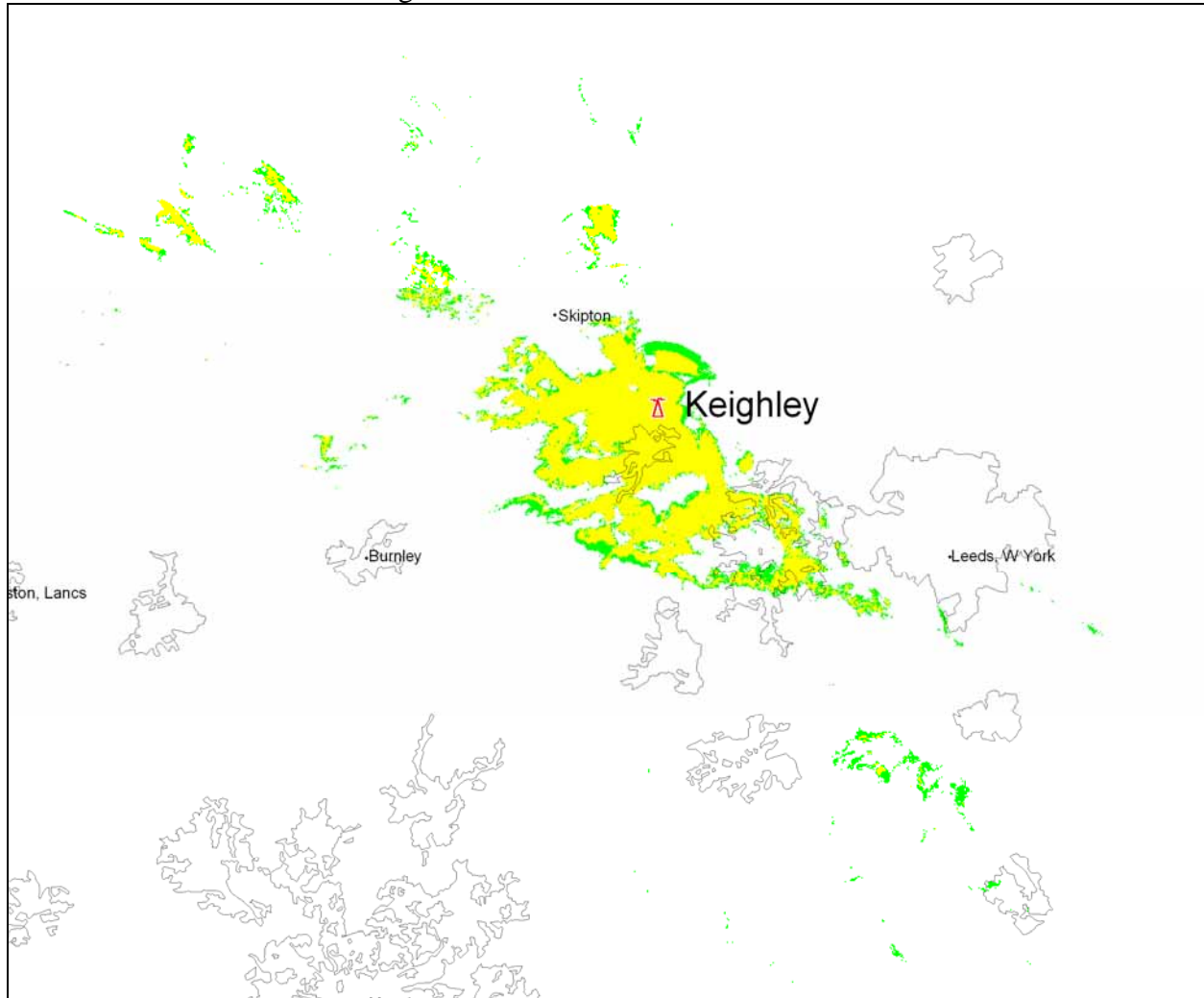
90% Locations and above        70% to 90% Locations   

Gross coverage	41578 households
Analogue PSA Coverage	27283 households
Digital PSA Coverage	26559 households

**Station:** KEIGHLEY  
**Location:** SE 0689 4438  
**Site Height** 305 m a.m.s.l.  
**Channel** 56  
**Max ERP:** 30 dBW  
**Polarisation:** Vertical



# KEIGHLEY DTT Gross coverage



90% Locations and above  70% to 90% Locations

Gross coverage	108840 households
Analogue PSA Coverage	32750 households
Digital PSA Coverage	41683 households