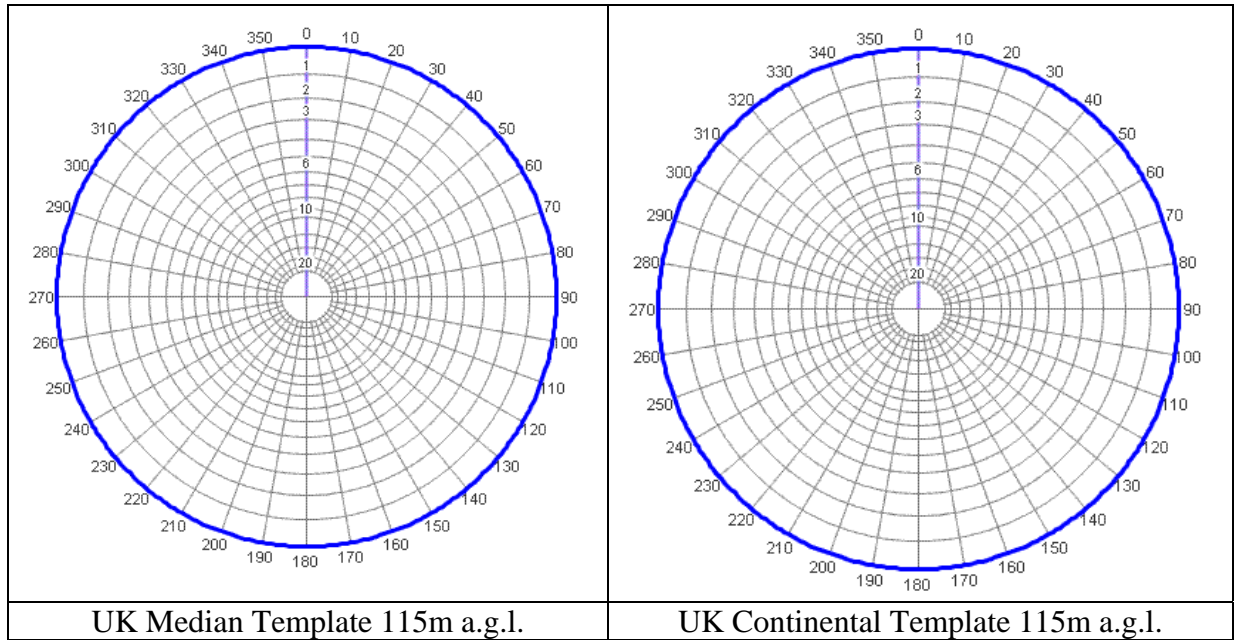
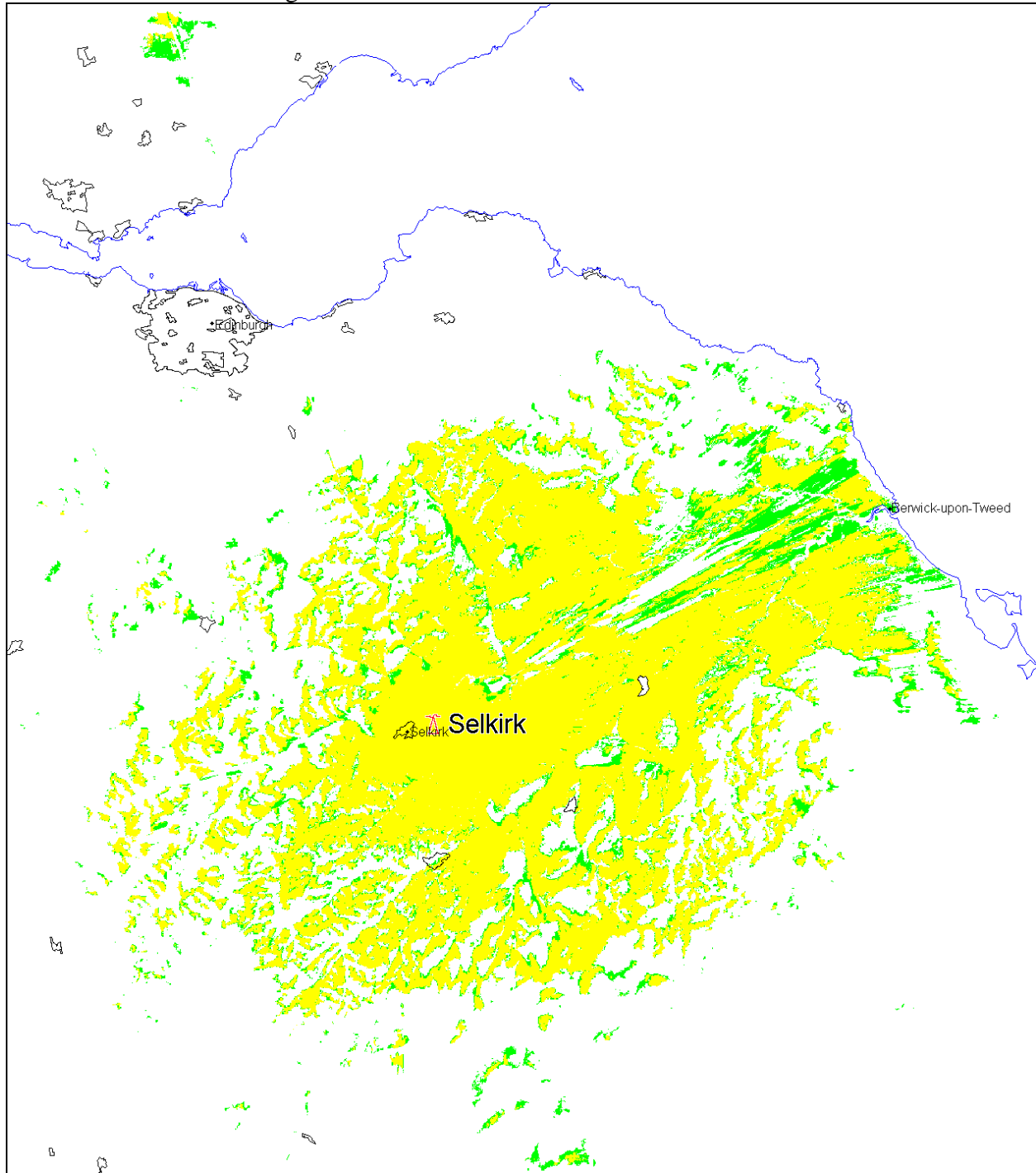


Station: Selkirk
Location: NT 5006 2941
Site Height 290 m a.m.s.l.
Channel 56
Max ERP: 40 dBW
Polarisation: Horizontal



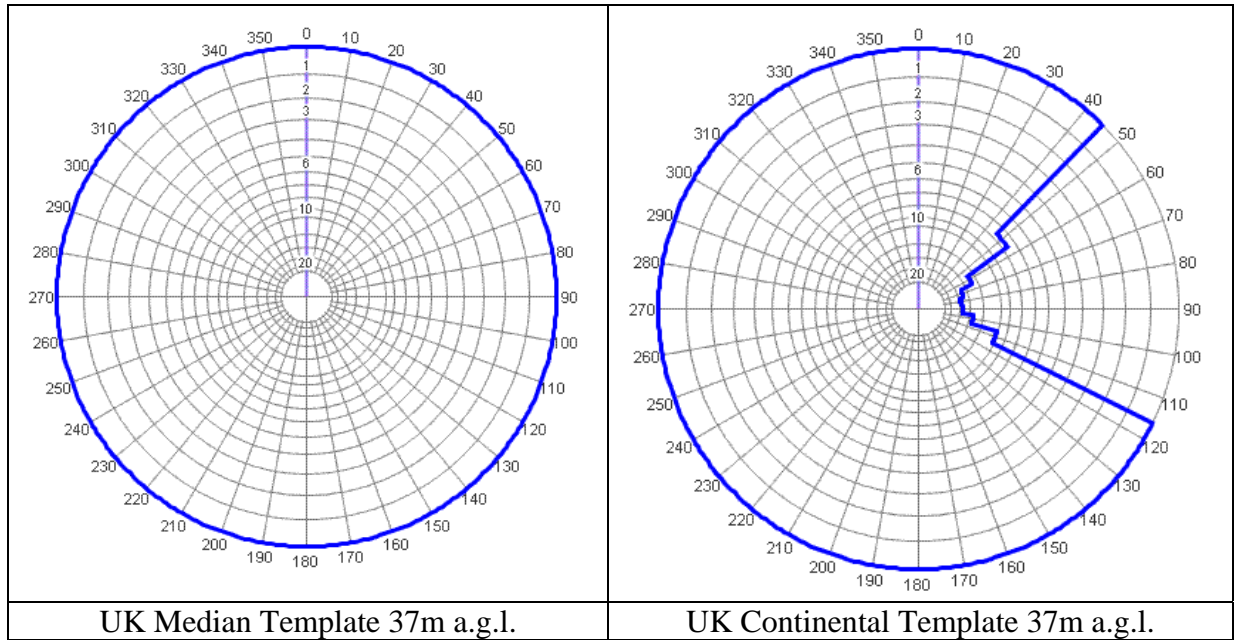
Selkirk DTT Gross coverage



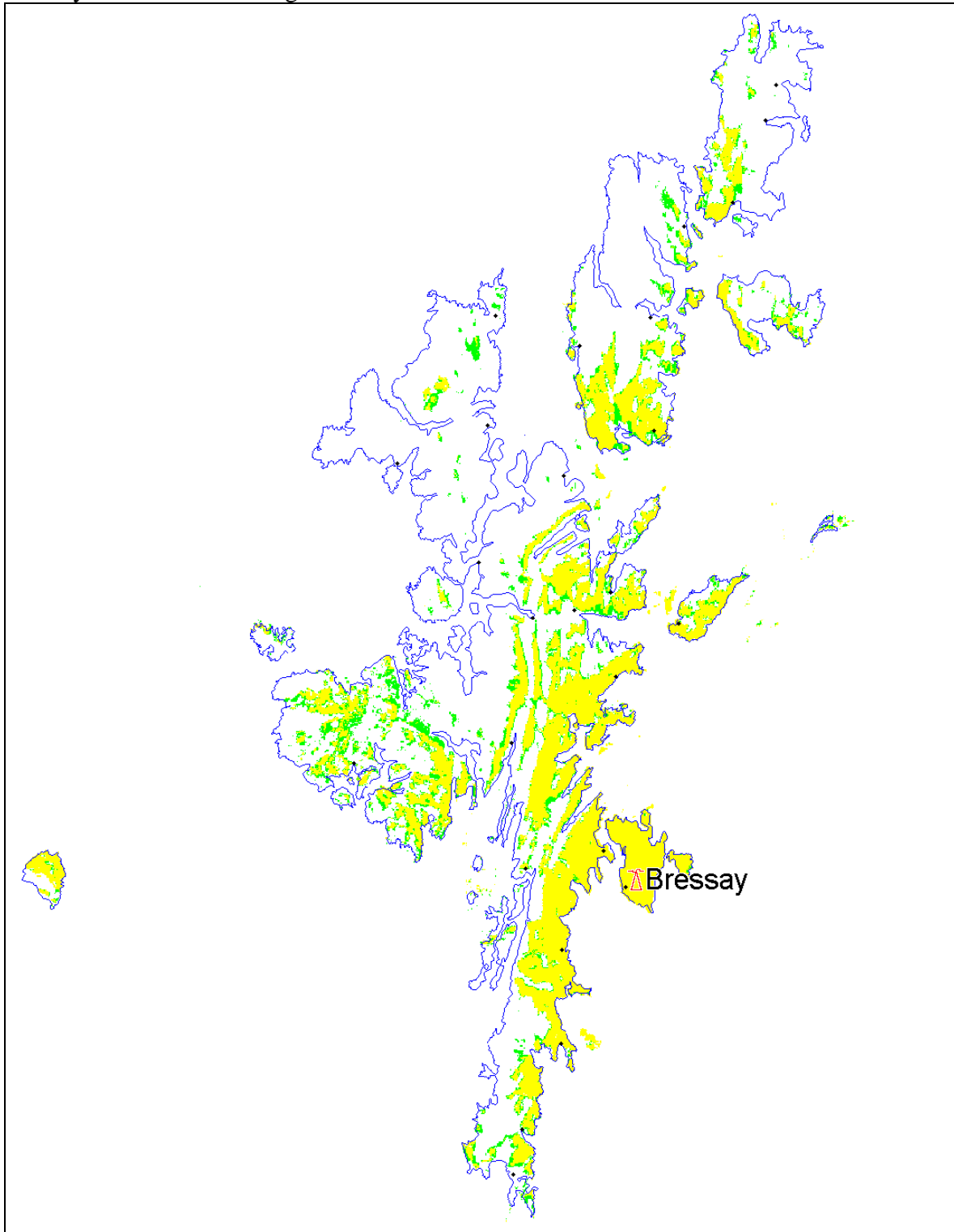
90% Locations and above 70% to 90% Locations

Gross coverage	34015 households
Analogue PSA Coverage	22141 households
Digital PSA Coverage	27006 households

Station: Bressay
Location: HU 5030 3870
Site Height 224 m a.m.s.l.
Channel 30
Max ERP: 30 dBW
Polarisation: Vertical



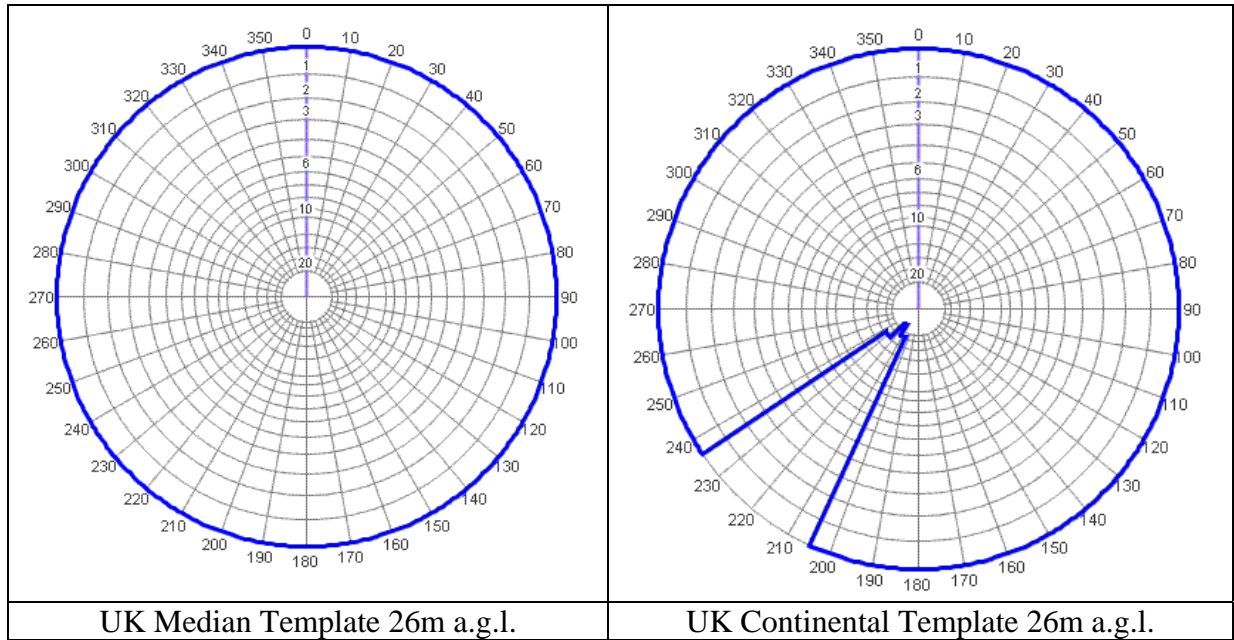
Bressay DTT Gross coverage



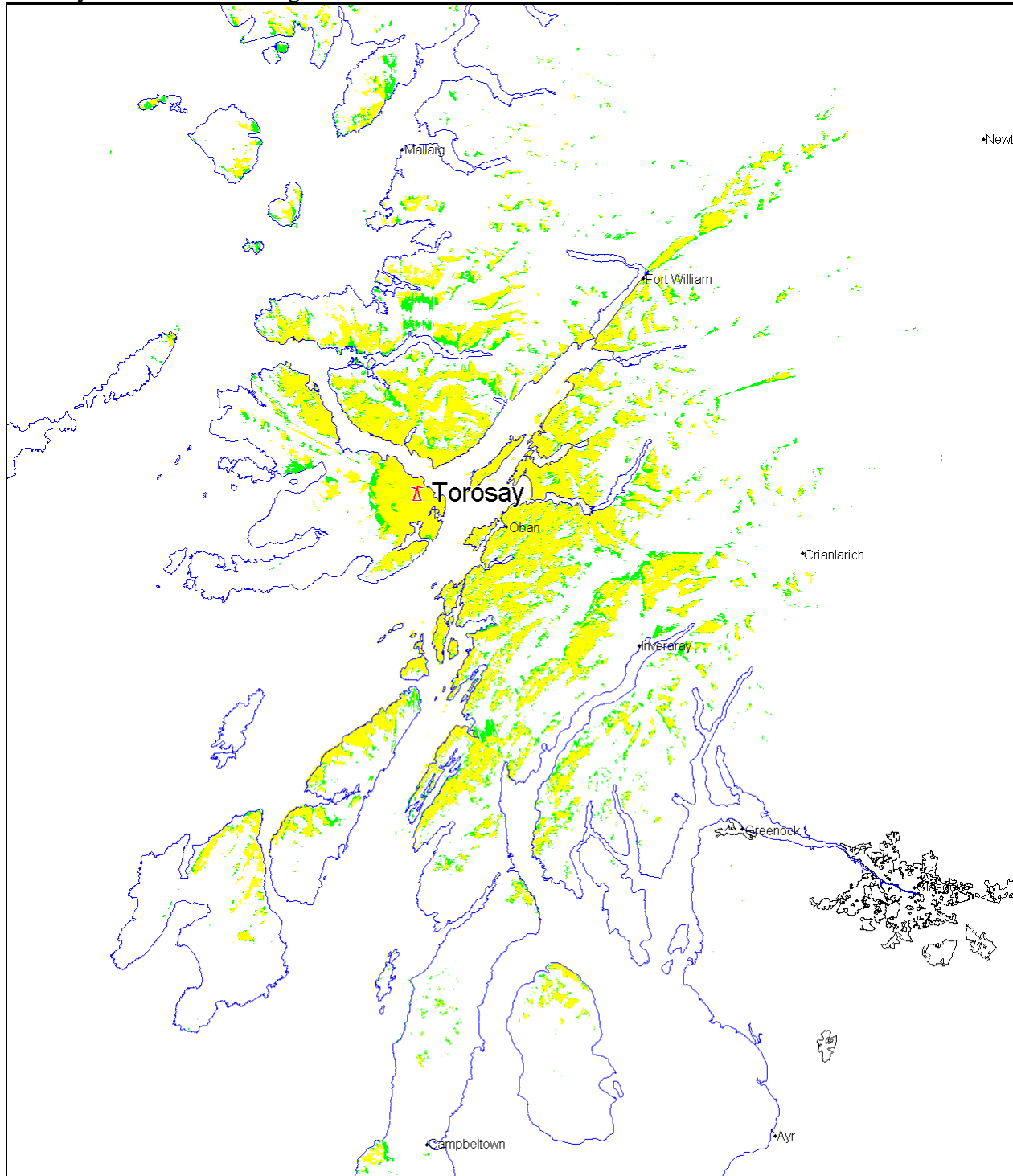
90% Locations and above 70% to 90% Locations

Gross coverage	5299 households
Analogue PSA Coverage	5125 households
Digital PSA Coverage	4832 households

Station: Torosay
Location: NM 7033 3579
Site Height 430 m a.m.s.l.
Channel 30
Max ERP: 30 dBW
Polarisation: Vertical



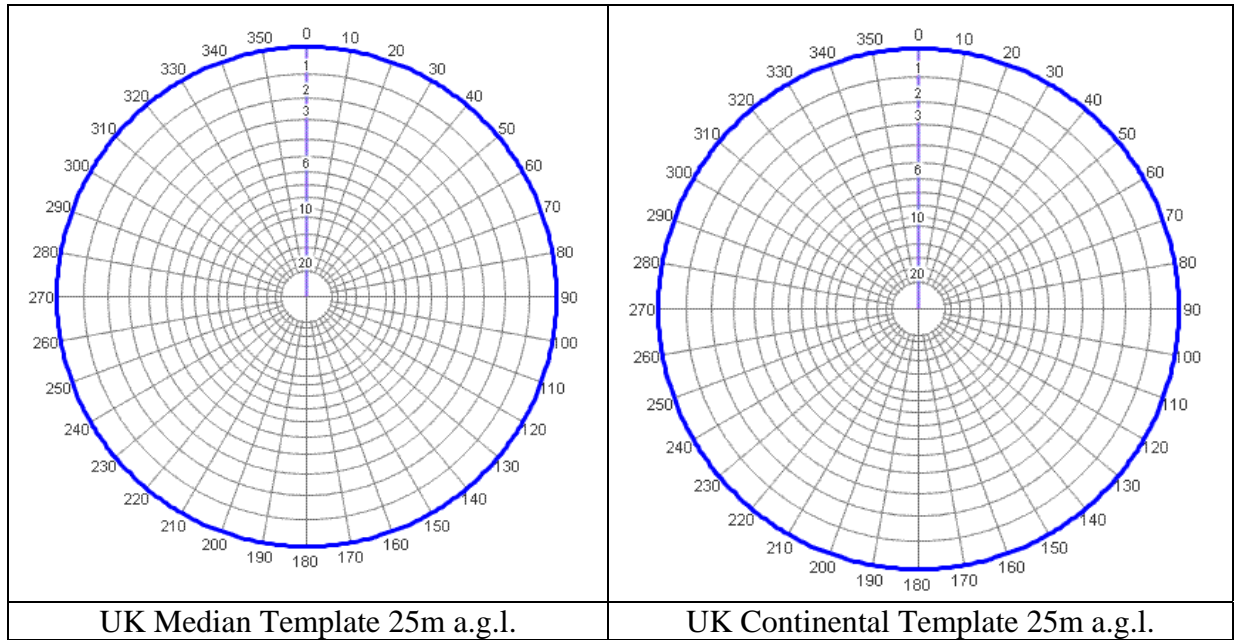
Torosay DTT Gross coverage



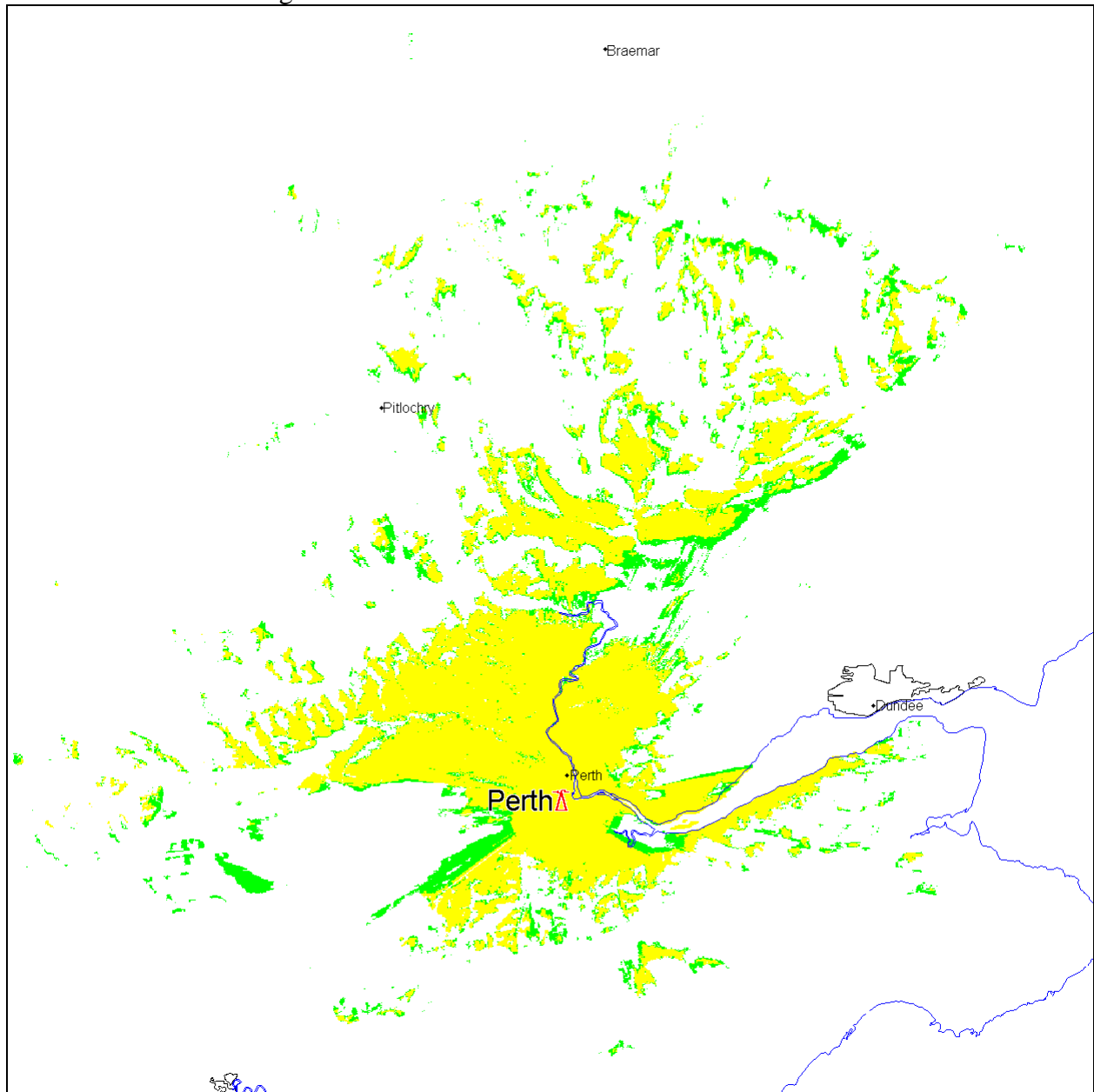
90% Locations and above 70% to 90% Locations

Gross coverage	7077 households
Analogue PSA Coverage	2378 households
Digital PSA Coverage	7071 households

Station:	Perth
Location:	NO 1089 2126
Site Height	123 m a.m.s.l.
Channel	30
Max ERP:	30 dBW
Polarisation:	Vertical



Perth DTT Gross coverage



90% Locations
and above

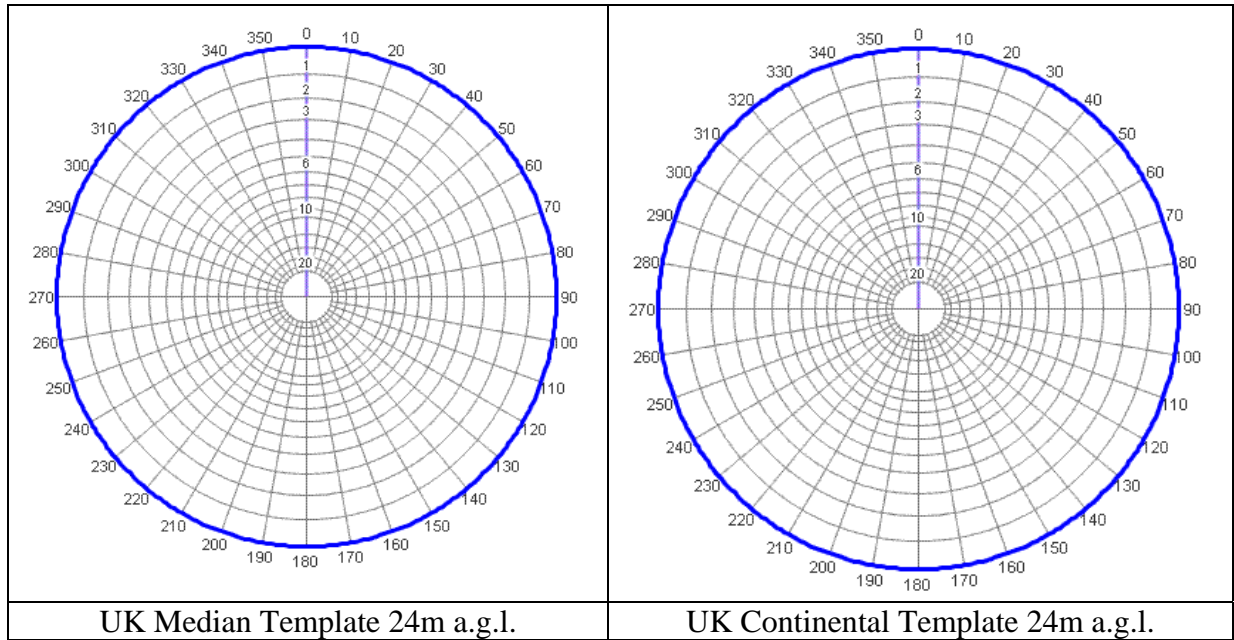


70% to 90% Locations

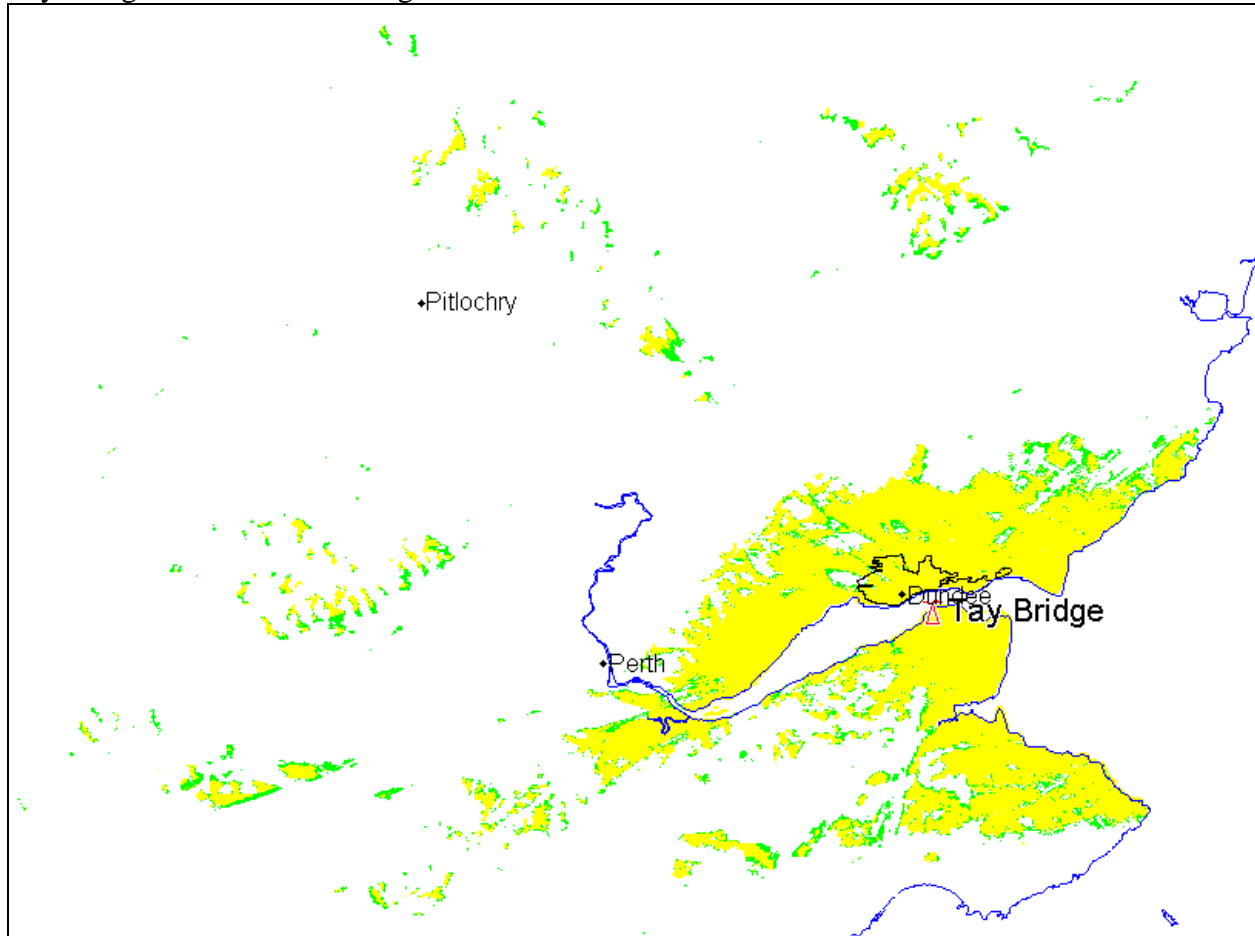


Gross coverage	41875 households
Analogue PSA Coverage	24218 households
Digital PSA Coverage	14539 households

Station: Tay Bridge
Location: NO 4307 2843
Site Height: 100 m a.m.s.l.
Channel: 51
Max ERP: 30 dBW
Polarisation: Vertical



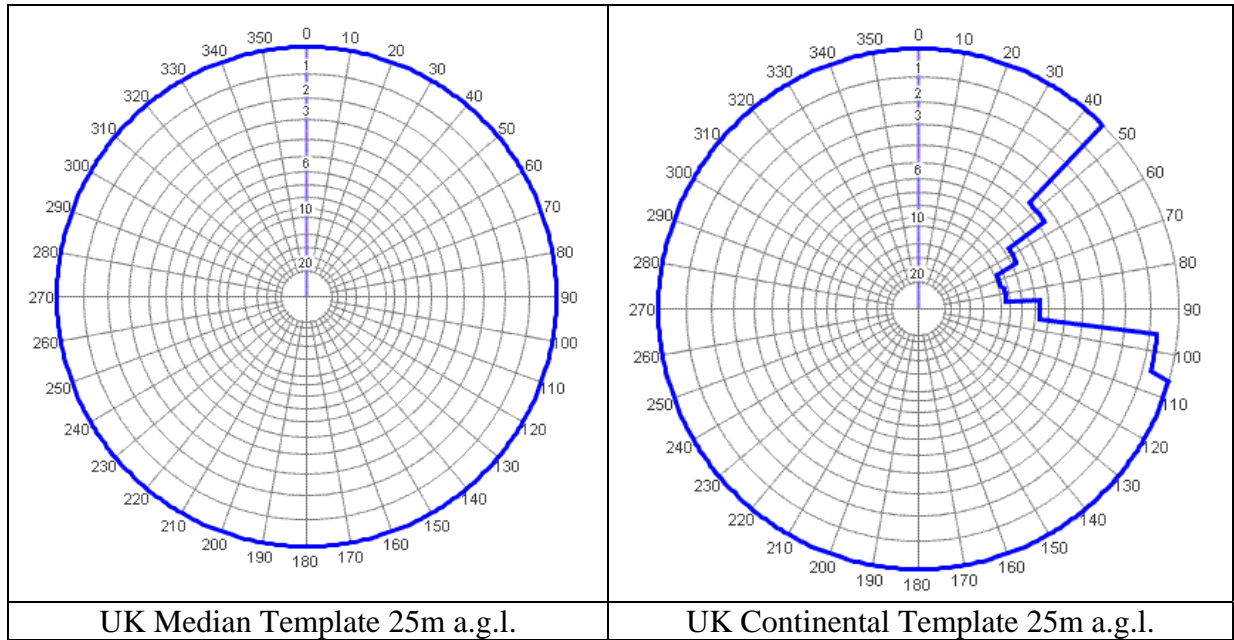
Tay Bridge DTT Gross coverage



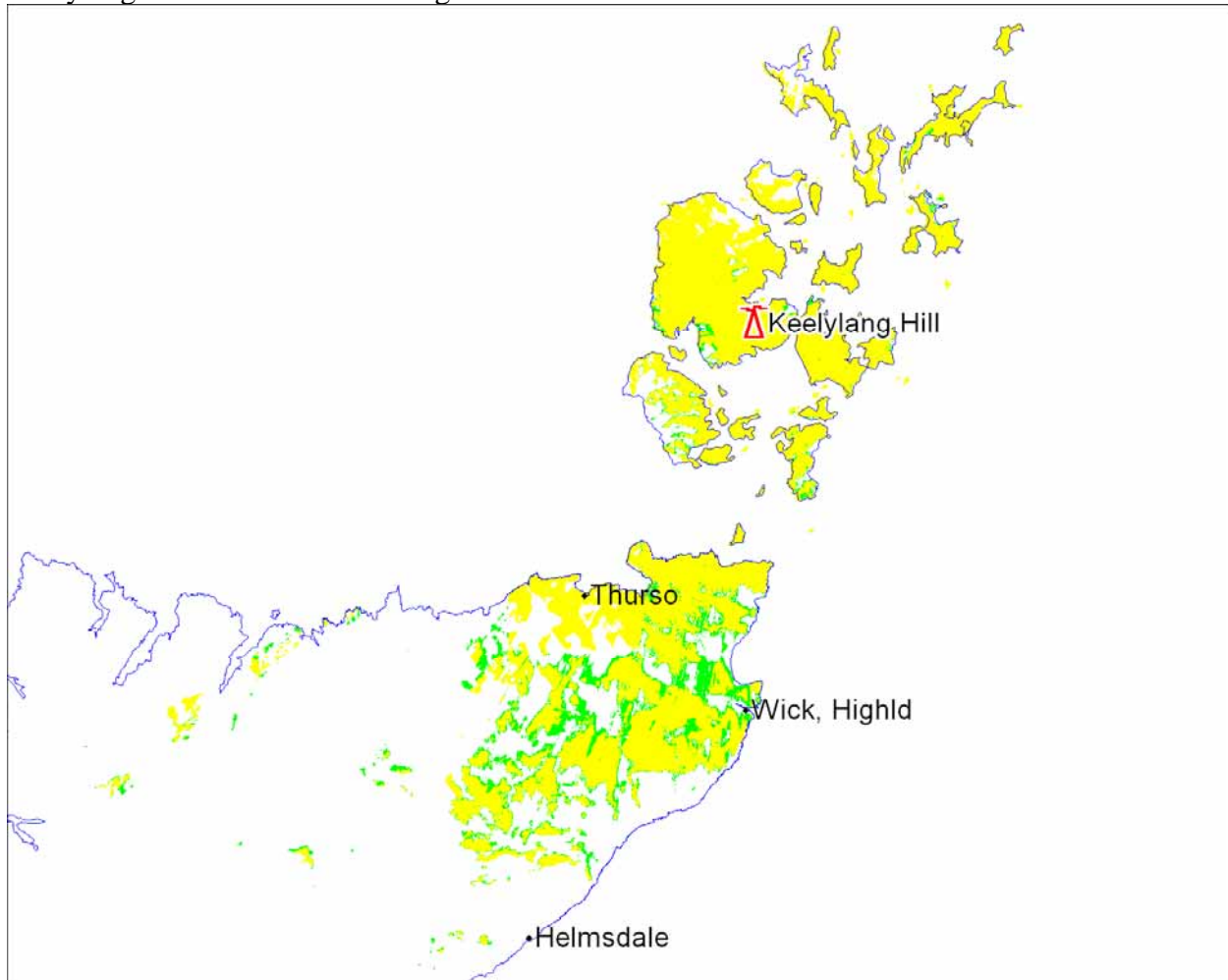
90% Locations and above 70% to 90% Locations

Gross coverage	108560 households
Analogue PSA Coverage	27147 households
Digital PSA Coverage	2024 households

Station: Keelylang Hill
Location: HY 3772 1027
Site Height 218 m a.m.s.l.
Channel 48
Max ERP: 40 dBW
Polarisation: Horizontal



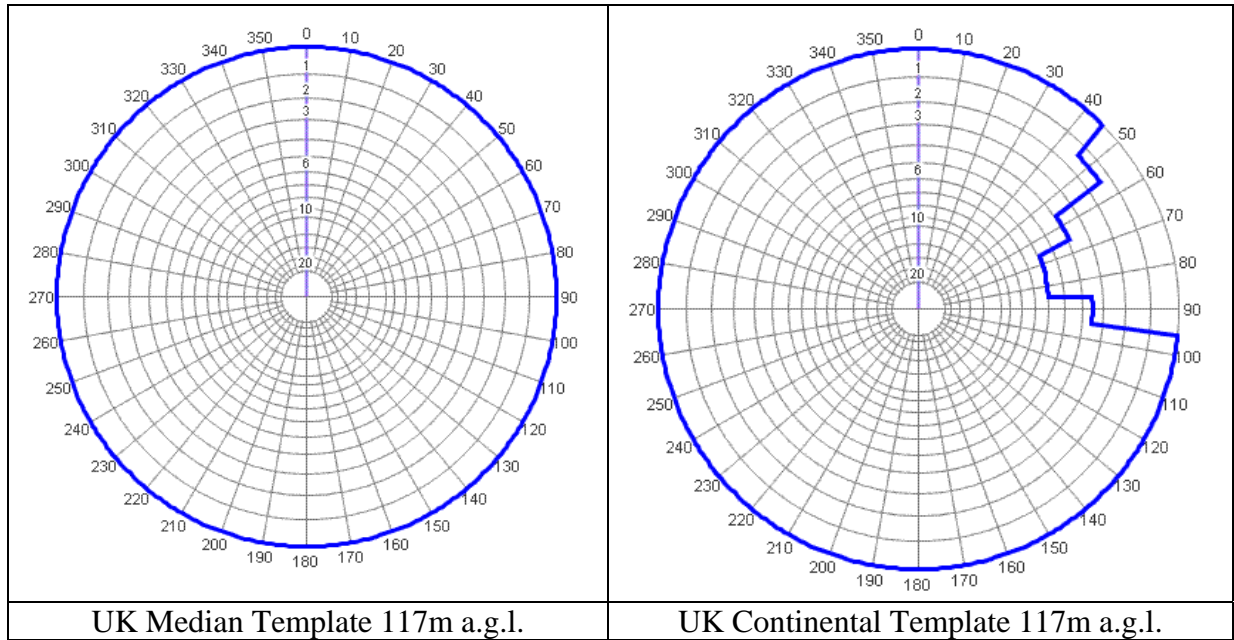
Keelylang Hill DTT Gross coverage



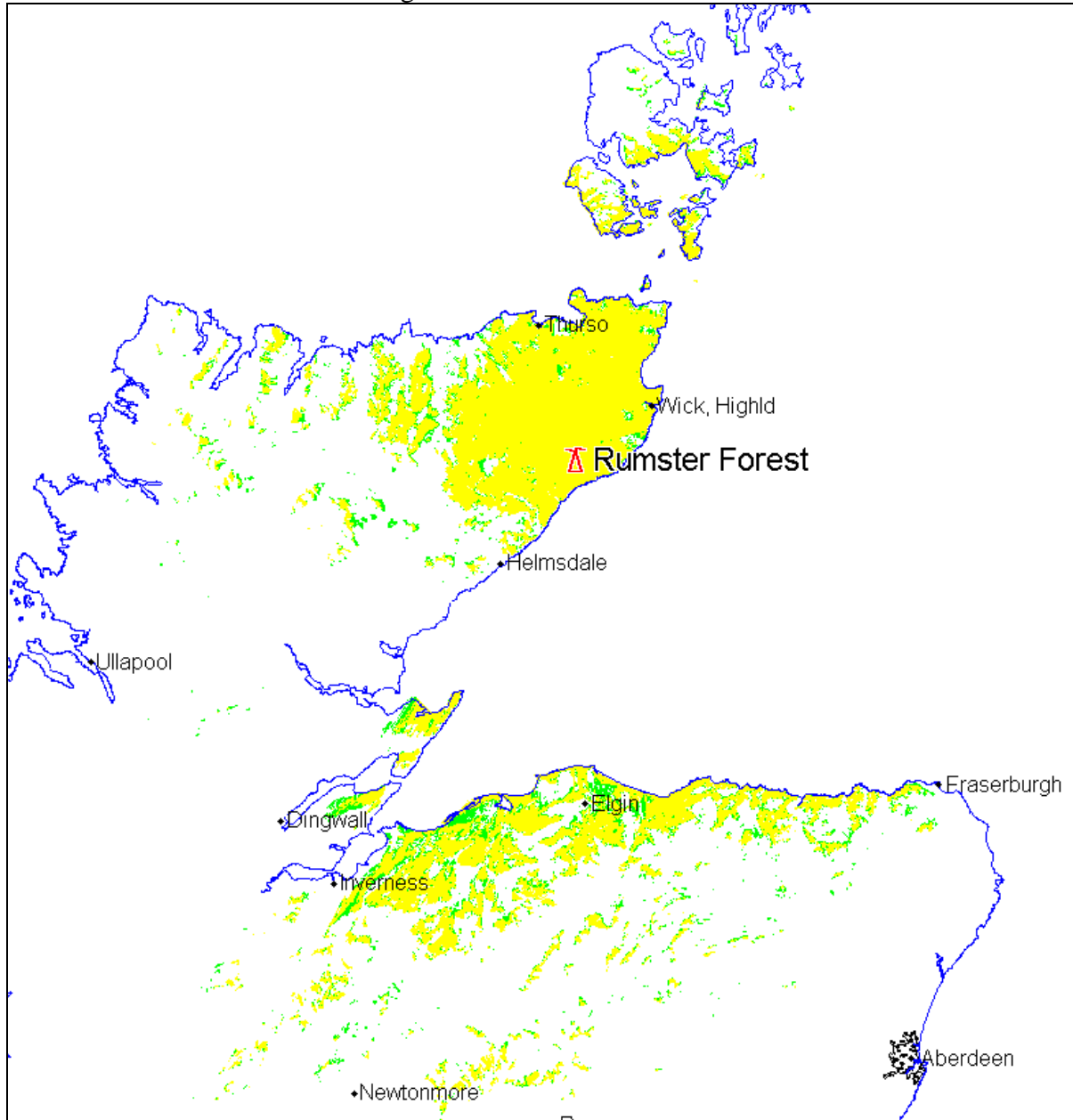
90% Locations and above 70% to 90% Locations

Gross coverage	16440 households
Analogue PSA Coverage	8928 households
Digital PSA Coverage	9448 households

Station: Rumster Forest
Location: ND 1978 3854
Site Height: 217 m a.m.s.l.
Channel: 52
Max ERP: 40 dBW
Polarisation: Horizontal



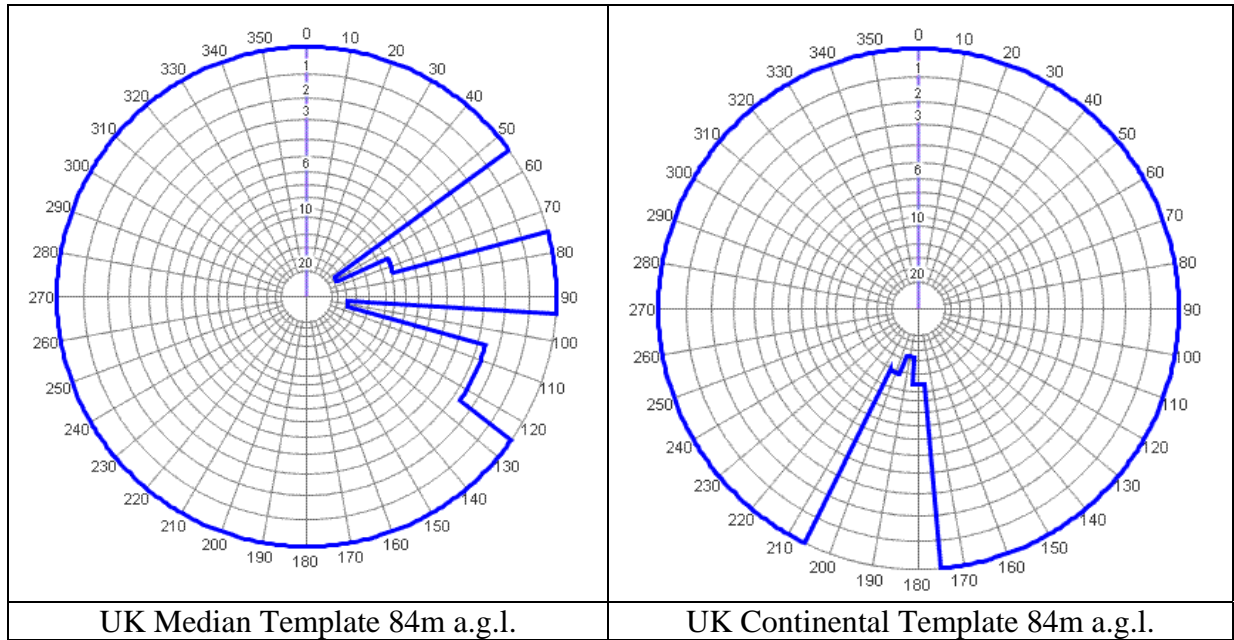
Rumster Forest DTT Gross coverage



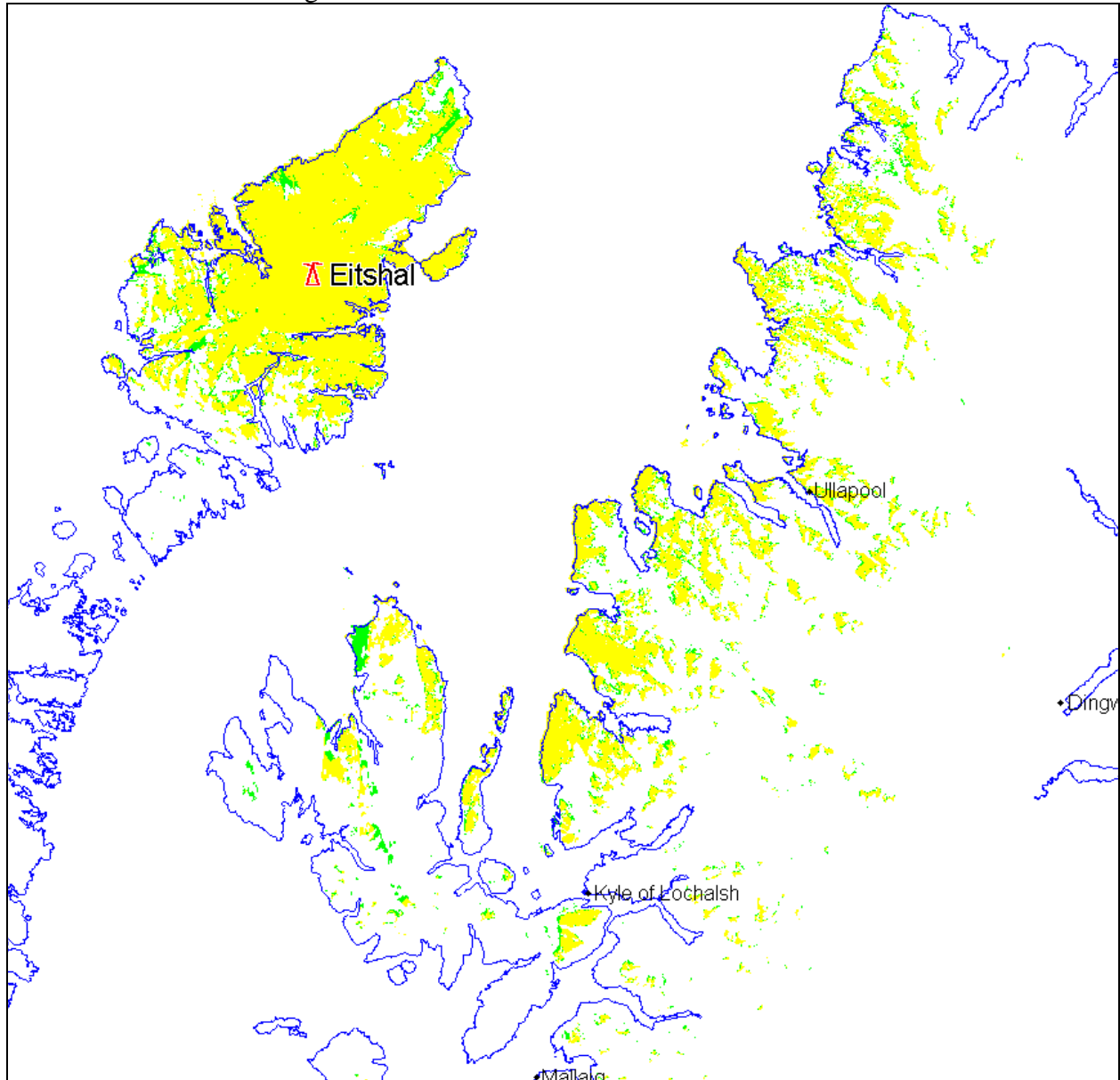
90% Locations and above 70% to 90% Locations

Gross coverage	50848 households
Analogue PSA Coverage	19083 households
Digital PSA Coverage	20427 households

Station: Eitshal
Location: NB 3056 3032
Site Height 201 m a.m.s.l.
Channel 30
Max ERP: 40 dBW
Polarisation: Horizontal



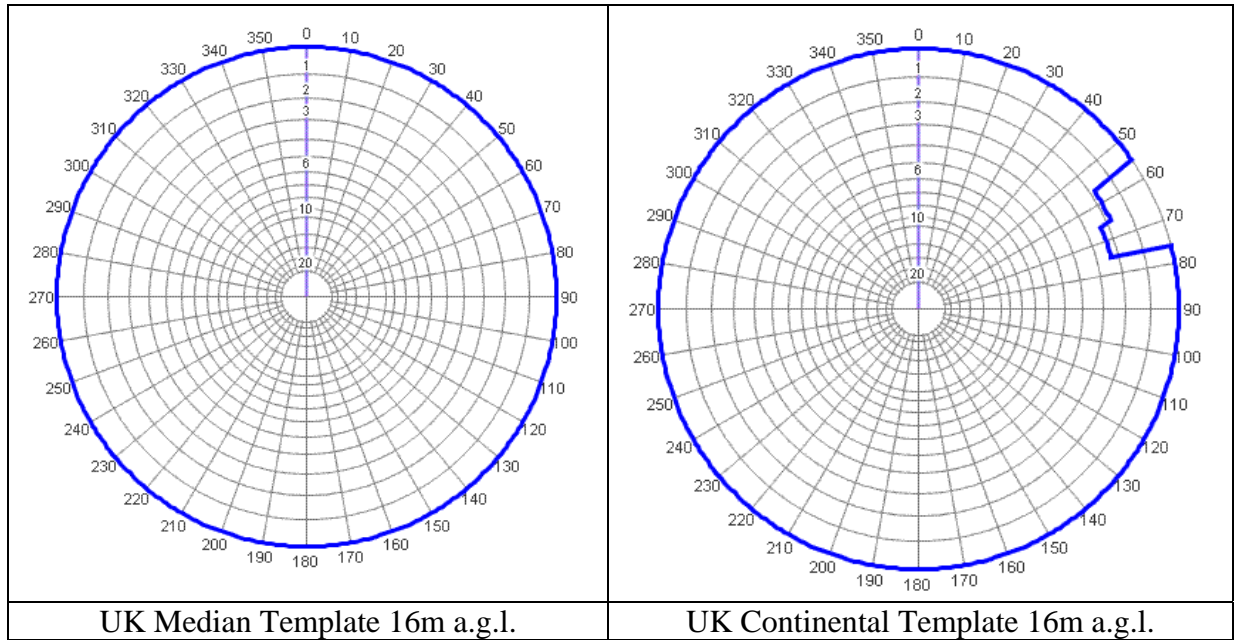
Eitshal DTT Gross coverage



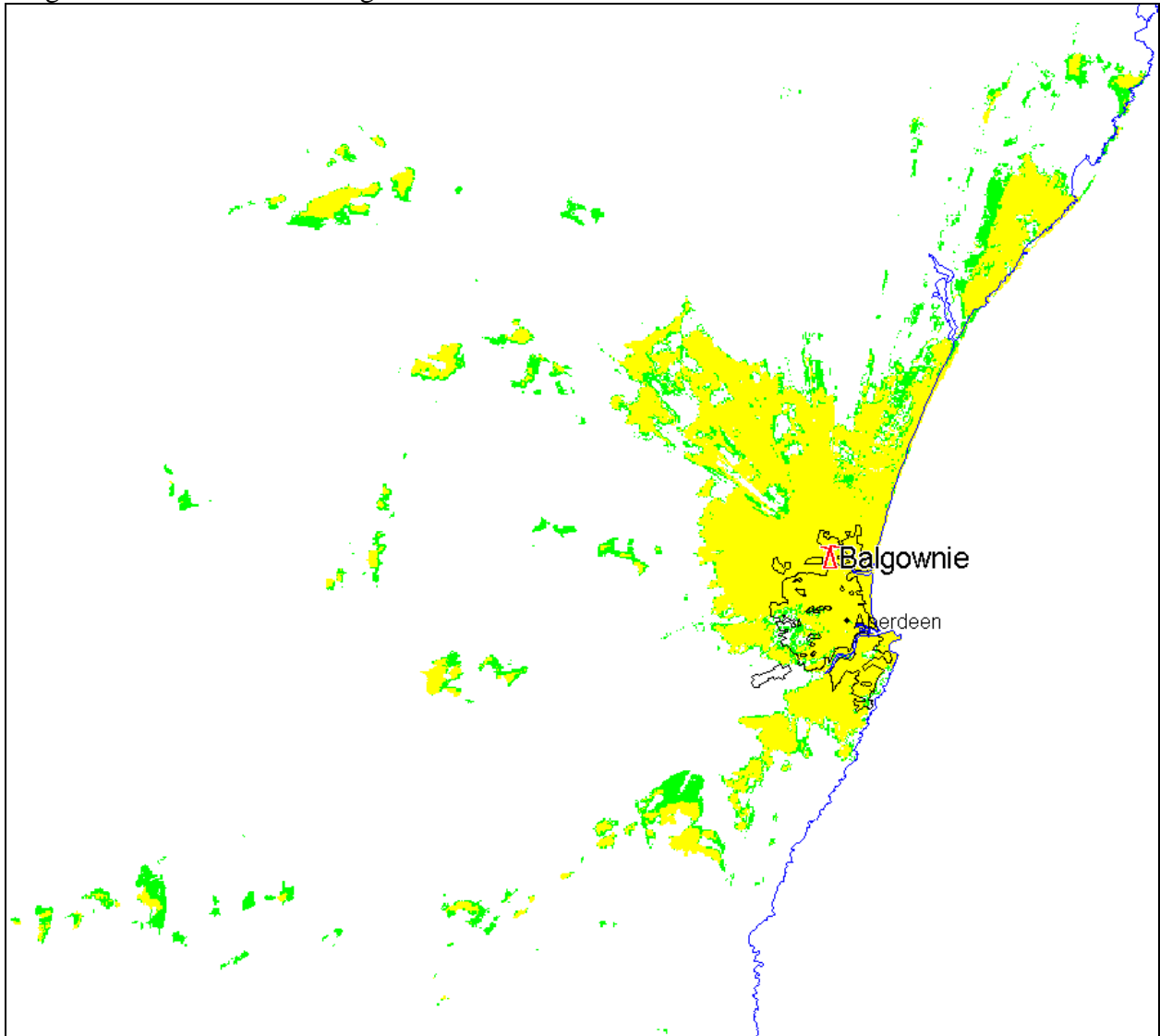
90% Locations and above 70% to 90% Locations

Gross coverage	9302 households
Analogue PSA Coverage	8603 households
Digital PSA Coverage	9299 households

Station: Balgownie
Location: NJ 9272 1045
Site Height 74 m a.m.s.l.
Channel 51
Max ERP: 30 dBW
Polarisation: Vertical



Balgownie DTT Gross coverage



Gross coverage	95881 households
Analogue PSA Coverage	8890 households
Digital PSA Coverage	1659 households